

Vehicle Rollovers in Traffic Crashes (2009)

Oklahoma Department of Public Safety | Highway Safety Office | 3223 N. Lincoln Blvd | Oklahoma City, OK 73105
www.ohso.ok.gov | Phone: 405/523-1570 | Fax: 405/523-1586

Exclusions

This fact sheet includes only persons inside a vehicle that rolled in a crash. All other vehicles and persons that were in the crash are excluded.

Rollover Vehicles

In 2009 there were 3,987 vehicles that rolled in traffic crashes. There were 220 fatalities (151 drivers and 69 passengers) and 3,606 persons injured in vehicles that rolled. This reflects a 5.0% decrease in the number of vehicles that rolled when compared to 2008. In addition, fatalities decreased 6.4% and injuries decreased 4.6%.

Number of Vehicles

Of the 3,956 crashes involving a vehicle that rolled, 86.4% involved only one vehicle, 12.3% involved two vehicles and 1.3% involved three or more vehicles.

Highway Class

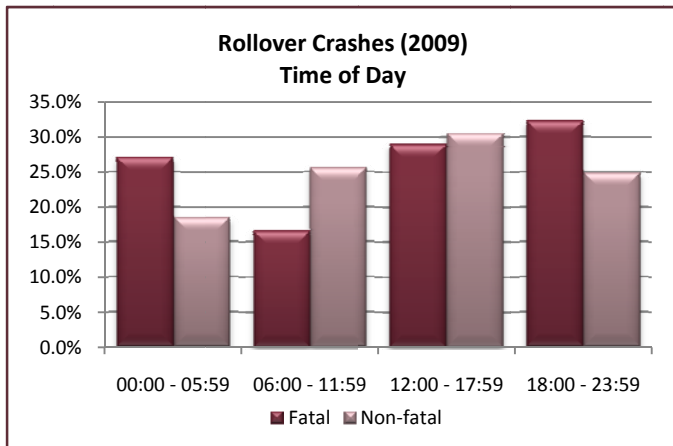
Of the 3,956 crashes involving a vehicle that rolled, 31.4% occurred on County Roads, 16.0% on rural State Highways and 14.3% on rural U.S. Highways.

Crashes Involving Rollover Vehicles (2009)						
Crash Injury Severity & Highway Class						
Highway Class	Fatal	% of Total Fatal	Injury	% of Total Injury	Total	% of Total
Rural U.S. Highway	32	14.7%	353	14.1%	565	14.3%
Interstate Highway	30	13.8%	320	12.8%	534	13.5%
Interstate Turnpike	2	.9%	71	2.8%	92	2.3%
Rural State Highway	43	19.8%	415	16.6%	631	16.0%
County Road	71	32.7%	792	31.7%	1242	31.4%
City Street	15	6.9%	299	12.0%	494	12.5%
Urban U.S. Highway	6	2.8%	112	4.5%	180	4.6%
Urban State Highway	14	6.5%	85	3.4%	142	3.6%
Non-interstate Turnpike	3	1.4%	54	2.2%	75	1.9%
Not Stated	1	.5%	0	.0%	1	.0%
Total	217	100.0%	2501	100.0%	3956	100.0%

Time & Day

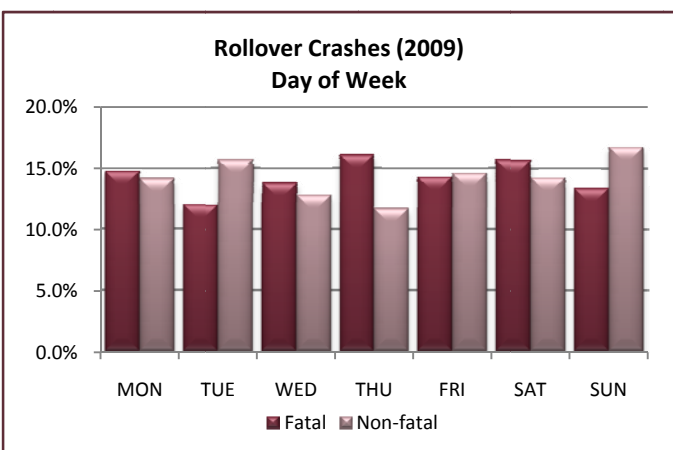
Fatal crashes involving a rolled vehicle occurred more often between the hours of 6:00 p.m. (18:00) and 11:59 p.m. (23:59) than any other time of day. Non-fatal crashes occurred more often between 12:00 Noon (12:00) and 5:59 p.m. (17:59) than any other time of day.

Fatal crashes involving a vehicle that rolled occurred on Thursday (16.1%) more than any other day of the week, followed by Saturday (15.7%). Non-fatal crashes occurred more often on Sunday (16.8%), followed by Tuesday (15.7%).



Drivers Age & Sex

In 2009, there were 3,987 drivers of vehicles that rolled in crashes. The table below shows the driver age and driver sex. Some 23.0% of the drivers of a vehicle that rolled were age 16-20, 15.1% were age 21-25 and 11.9% were age 26-30. Some 63.9% of the drivers of vehicles that rolled were male.



Driver Age	Unknown	Female	Male	Total	% of Total
Unknown	88	3	9	100	2.5%
Under 16		16	16	32	0.8%
16 - 20		386	533	919	23.0%
21 - 25		205	399	604	15.1%
26 - 30		163	310	473	11.9%
31 - 35		114	236	350	8.8%
36 - 40		107	194	301	7.5%
41 - 45		90	194	284	7.1%
46 - 50		80	179	259	6.5%
51 - 55		64	139	203	5.1%
56 - 60		41	125	166	4.2%
61 - 65		26	93	119	3.0%
66 - 70		26	52	78	2.0%
71 - 75		13	33	46	1.2%
76+		17	36	53	1.3%
Total	88	1351	2548	3987	100.0%

Driver Contributing Factors

Of the 3,987 vehicles that rolled, 39.5% were attributed to Unsafe Speed, 14.4% were Inattention and 11.4% were DUI-Alcohol. The table below denotes the various categories for the primary contributing factor of Unsafe Speed.

Drivers - Alcohol-Related Condition

In 2009, 17.5% (697 of 3,987) of the drivers in vehicles that rolled had an Alcohol-Related Driver Condition. The table below lists the age and sex of these drivers. Of the total drivers with an Alcohol-Related Driver Condition, 78.9% were male.

Contributing Factors	Drivers	% of Total
Unsafe Speed - Driver's Ability (Age)	9	.6%
Unsafe Speed - Inexperienced Driver (Young)	67	4.3%
Unsafe Speed - Exceeding Legal Limit	178	11.3%
Unsafe Speed - For Traffic Conditions	62	3.9%
Unsafe Speed - For Type of Roadway	321	20.4%
Unsafe Speed - For Ice or Snow on Roadway	308	19.6%
Unsafe Speed - Rain or Wet Roadway	206	13.1%
Unsafe Speed - Wind	15	1.0%
Unsafe Speed - Other Weather Conditions	9	.6%
Unsafe Speed - Vehicle Condition	16	1.0%
Unsafe Speed - View Obstruction	4	.3%
Unsafe Speed - On Curve/Turn	311	19.7%
Unsafe Speed - Other	69	4.4%
Total	1575	100.0%

Driver Age	Unknown	Female	Male	Total	% of Total
Unknown	2		2	4	0.6%
Under 16			3	3	0.4%
16 - 20		32	78	110	15.8%
21 - 25		25	125	150	21.5%
26 - 30		25	106	131	18.8%
31 - 35		20	48	68	9.8%
36 - 40		14	44	58	8.3%
41 - 45		10	40	50	7.2%
46 - 50		10	46	56	8.0%
51 - 55		5	23	28	4.0%
56 - 60		3	20	23	3.3%
61 - 65			10	10	1.4%
66 - 70		1	3	4	0.6%
71 - 75			2	2	0.3%
Total	2	145	550	697	100.0%

Some 21.5% of the drivers with an Alcohol-Related Driver Condition were age 21-25, 18.8% were age 26-30 and 15.8% were age 16-20.

Restraint Use Among Fatalities

In 2009, 220 of the occupants in rolled vehicles were killed. Of the 220 fatalities, 151 were drivers and 69 were passengers. Of the 220 fatalities, 208 had a known restraint use.

Occupants of pickup trucks that rolled were unrestrained at a higher rate than occupants of passenger vehicles that rolled. Some 87.7% (71 of 81) of pickup truck occupants were unrestrained compared to 68.5% (76 of 111) of occupants in passenger vehicles.

In 2009 crashes, 68.5% of occupants in passenger vehicles that rolled were unrestrained compared to 87.7% of occupants in pickup trucks.

**Fatalities in Vehicles That Rolled in 2009 Crashes
Known Restraint Use**

Person Type	Vehicle Type	Restraint Use			Total
		Not In Use	In Use	Child Restraint	
Driver	Passenger Vehicle	44	24		68
	Pickup Truck	52	8		60
	Other Vehicle	9	5		14
	Total	105	37		142
Passenger	Passenger Vehicle	32	9	2	43
	Pickup Truck	19	2		21
	Other Vehicle	1	1		2
	Total	52	12	2	66
Total	Passenger Vehicle	76	33	2	111
	Pickup Truck	71	10		81
	Other Vehicle	10	6		16
	Total	157	49	2	208

Excludes 12 fatalities with unknown restraint use.

Driver Fatalities Restraint Use & Alcohol

In 2009 crashes, drinking drivers killed in vehicles that rolled were more likely to be unrestrained than drivers who were not drinking. Some 87.8% (42 of 48) of the drivers killed in a rolled vehicle who were also drinking were unrestrained, while 67.5% (54 of 80) of the drivers killed in a rolled vehicle who were not drinking were unrestrained.

**Driver Fatalities in 2009 Crashes
In Passenger Vehicles/Pickup Trucks That Rolled
Known Restraint Use & Driver Condition**

Restraint Use	Alcohol-Related		Total
	No	Yes	
Not In Use	54	42	96
In Use	26	6	32
Total	80	48	128

Driver Ejected

In 2008, of the 225 drivers ejected from a vehicle that rolled, 92.9% (237 of 255) were killed or severely injured. Some 96.3% (78 of 81) of the drivers ejected and killed were not using restraints and 89.7% (140 of 156) of the drivers ejected and severely injured were not using restraints.

**Drivers Ejected from Rolled Vehicle in 2009 Crashes
Driver Injury Severity & Restraint Use**

Injury Severity	Ejected	Unknown	Restraint Use		Total
			Not In Use	In Use	
Fatal	Ejected, Partially		27		27
	Ejected, Totally	2	51	1	54
	Total	2	78	1	81
Injury	Ejected, Partially	1	17	7	25
	Ejected, Totally	8	123		131
	Total	9	140	7	156
Total	Ejected, Partially	1	44	7	52
	Ejected, Totally	10	174	1	185
	Total	11	218	8	237

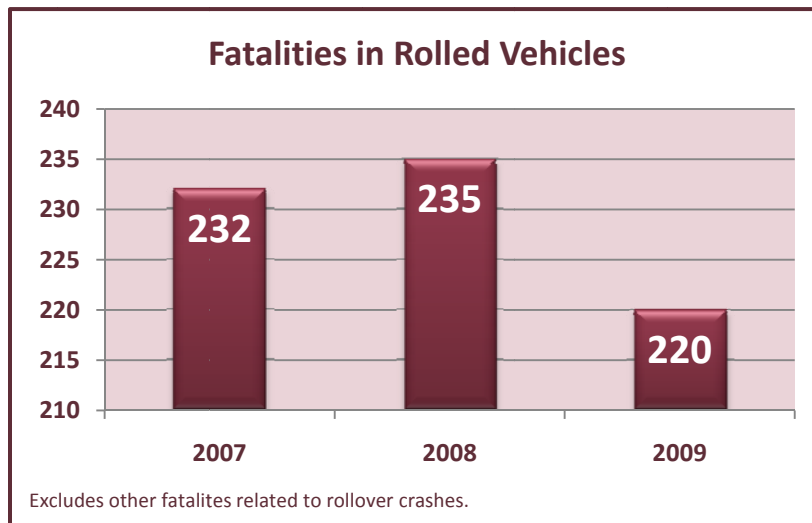
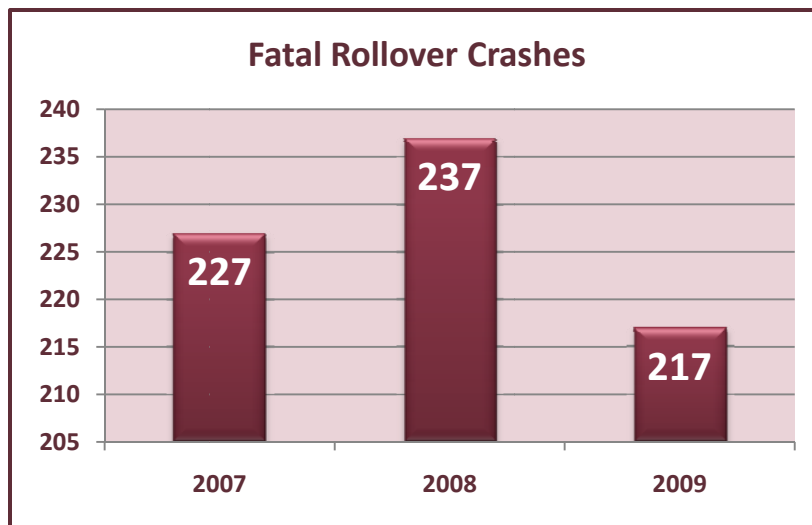
In 2009 crashes, drinking drivers killed in vehicles that rolled were more likely to be unrestrained than drivers who were not drinking

Rollover Crashes (2009)
County & Crash Injury Severity

County	Fatal	Incapacitating	Non-incapacitating	Possible	None	Total
Adair	5	6	9	4	7	31
Alfalfa	2		10	5	6	23
Atoka	2	3	7	7	16	35
Beaver	1	3		5	12	21
Beckham	6	5	17	13	19	60
Blaine	1	7	5	1	11	25
Bryan	2	13	19	11	20	65
Caddo	5	9	26	23	25	88
Canadian	9	15	26	27	41	118
Carter	3	9	20	11	55	98
Cherokee	2	7	26	14	14	63
Choctaw		3	5	9	12	29
Cimarron	1	2	5	2	4	14
Cleveland	1	14	35	11	22	83
Coal	2	2	5		3	12
Comanche	8	16	28	13	33	98
Cotton		3	8	2	6	19
Craig		2	11	3	9	25
Creek	7	5	17	25	14	68
Custer	3	12	15	7	28	65
Delaware	5	15	15	9	13	57
Dewey	2	3	5	2	6	18
Ellis		2	3	3	6	14
Garfield		5	20	15	22	62
Garvin	3	15	26	5	23	72
Grady	3	10	23	10	30	76
Grant	1	3	2	5	7	18
Greer	1	1	4	1	7	14
Harmon			4		3	7
Harper	1	3	3	4	6	17
Haskell	2		8	2	9	21
Hughes	4	2	9	1	4	20
Jackson	2	2	15	10	19	48
Jefferson	2	2	2	3	8	17
Johnston	2	3	4	6	8	23
Kay	7	4	27	8	23	69
Kingfisher		6	16	11	18	51
Kiowa		2	9	2	9	22
Latimer	2	3	8	8	6	27
LeFlore	4	15	13	7	22	61
Lincoln	5	14	17	10	9	55
Logan	3	9	13	3	21	49
Love	1	5	8	9	20	43
McClain	1	11	12	15	28	67
McCurtain	6	9	33	18	22	88
McIntosh	3	2	7	8	17	37
Major	1	5	14	10	11	41
Marshall		4	15	2	12	33
Mayes	2	7	14	13	16	52
Murray	2	6	14	4	6	32
Muskogee	4	6	13	10	19	52
Noble	2	8	16	11	6	43
Nowata		5	18	5	4	32
Okfuskee	3	3	10	6	10	32
Oklahoma	14	45	76	59	77	271
Okmulgee	5	1	22	4	11	43
Osage	5	12	21	10	12	60
Ottawa	2	2	16	11	16	47
Pawnee	2	3	9	2	8	24
Payne	6	10	29	14	19	78

**Rollover Crashes (2009)
County & Crash Injury Severity**

County	Fatal	Incapacitating	Non-incapacitating	Possible	None	Total
Pittsburg	4	13	19	20	27	83
Pontotoc	3	2	9	9	9	32
Pottawatomie	4	12	31	12	13	72
Pushmataha	1	2	6	8	6	23
Roger Mills		1	6	2	7	16
Rogers	4	10	32	13	21	80
Seminole	3	2	33	5	7	50
Sequoyah	2	13	21	20	43	99
Stephens	4	13	14	12	16	59
Texas	3	1	7	6	22	39
Tillman	1	3	6	3	6	19
Tulsa	9	30	91	56	67	253
Wagoner	4	6	24	16	17	67
Washington		4	15	13	4	36
Washita	1	2	19	6	16	44
Woods	3		6	3	1	13
Woodward	3	1	14	14	6	38
Total	217	514	1240	747	1238	3956



Rollover Crashes (2009)
City/Town & Crash Injury Severity

City/Town	Fatal	Incapacitating	Non-incapacitating	Possible	None	Total
Ada			1	1	1	3
Adair					1	1
Altus	1		1		3	5
Anadarko	1		3	1	3	8
Ardmore		3	7	1	8	19
Atoka				1		1
Bartlesville		3	4	1	1	9
Bethany			1		1	2
Bethel Acres			1	1		2
Bixby		1	1	3	7	12
Blackwell		1				1
Blanchard	1		1	3	5	10
Boise City			1			1
Bokchito		1				1
Boley					1	1
Bray			1			1
Bristow			1		2	3
Broken Arrow		5	14	8	2	29
Broken Bow				1	1	2
Burns Flat			1			1
Cache				1		1
Calera			3		2	5
Calumet	1			1		2
Caney				2		2
Catoosa			1	1	1	3
Chandler		1	2	3		6
Checotah		2		1	4	7
Chickasha		1	2		3	6
Choctaw				3	3	6
Chouteau		1				1
Claremore	1	1	3		1	6
Clinton	1	1	1	1	3	7
Colbert			1			1
Collinsville			2		1	3
Comanche		1				1
Coweta					1	1
Cromwell			1			1
Cushing	2				1	3
Del City		1	1		1	3
Dibble		2			2	4
Dickson			1		1	2
Disney					1	1
Duncan		2	1	2	2	7
Durant		3	3	3	3	12
Edmond	1	3	9	6	4	23
El Reno	2		3	2	7	14
Elgin			1			1
Elk City					3	3
Enid			7	4	6	17
Eufaula					1	1
Fairview		1	1			2
Forest Park	1					1
Foyil				1		1
Frederick					1	1
Garber					1	1
Garvin		1				1
Geary	1				3	4
Glenpool		1	1	2	1	5
Goldsby				1		1
Grove	1			1	1	3
Guthrie		2	3	1	6	12

Rollover Crashes (2009)
City/Town & Crash Injury Severity

City/Town	Fatal	Incapacitating	Non-incapacitating	Possible	None	Total
Haileyville			1			1
Harrah		1		2	2	5
Hastings					1	1
Heavener			2			2
Hugo			1		1	2
Hydro				1		1
Idabel		1				1
Jay	1	1			1	3
Jenks			4	1	1	6
Kingfisher				1	1	2
Kinta	1					1
Kiowa			1			1
Lawton	2	3	3	3	9	20
Lexington					1	1
Lindsay		1			1	2
Locust Grove					3	3
Lone Grove	1				4	5
Luther		1		1		2
Madill			2	1		3
Marietta					1	1
Marlow					1	1
McAlester		1	6	6	12	25
McLoud	1	1	2		2	6
Meno				1		1
Miami			2	1	5	8
Midwest City		2	2	1	3	8
Minco					1	1
Moore			6	1	3	10
Muldrow		2			2	4
Muskogee	1	2	3	5	8	19
Mustang		1				1
Newcastle		4	1	6	12	23
Ninnekah			2	1		3
Noble			1	1		2
Norman	1	11	19	3	9	43
Nowata					1	1
Okarche			1		1	2
Oklahoma City	13	40	74	60	82	269
Okmulgee			3	1	4	8
Oologah			1			1
Optima					1	1
Owasso		1	6	2	3	12
Pauls Valley			3	2		5
Piedmont	1	1	1	2		5
Pink		2	2			4
Pocola	1		3	1	3	8
Ponca City			2	2	1	5
Poteau		1		1	3	5
Prague				1		1
Pryor	1	1			1	3
Purcell			2		2	4
Quinton	1					1
Ratliff City					1	1
Ringling					1	1
Ringwood				1		1
Roland			1	2	2	5
S. Coffeyville				1		1
Salina			1			1
Sallisaw			2	4	6	12
Sand Springs	2	1		1	5	9
Sapulpa			5	3	3	11

Rollover Crashes (2009)
City/Town & Crash Injury Severity

City/Town	Fatal	Incapacitating	Non-incapacitating	Possible	None	Total
Savanna		1		1		2
Sawyer			1	1		2
Seminole	1		1			2
Shawnee	1	1	3	4	3	12
Skiatook	1	1	1	1	2	6
Slaughterville			2			2
Spencer					1	1
Sportsman Acres					1	1
Stillwater			3	1	2	6
Stilwell				1		1
Stringtown					1	1
Stroud		1		1		2
Sulphur	1					1
Tahlequah			4	1		5
Temple				1		1
Terral		1				1
The Village		1	1			2
Thomas					1	1
Tishomingo				1		1
Tonkawa					1	1
Tulsa	5	16	43	33	37	134
Tushka		1	1		3	5
Tuttle		1	1		4	6
Union City	1	1	1			3
Vinita		1	1		1	3
W. Siloam Springs	1			1	1	3
Wagoner					2	2
Walters				1		1
Warr Acres			1		1	2
Weatherford					3	3
Webbers Falls				2	1	3
Wellston			1	1	1	3
Wilburton					1	1
Wilson			1			1
Woodward	1				1	2
Yale			1			1
Yukon		1		1		2
Total	53	144	317	229	372	1115