

# Vehicle Rollovers in Traffic Crashes (2008)

## Fact Sheet

Oklahoma Department of Public Safety, Highway Safety Office, 3223 N. Lincoln Blvd., Oklahoma City, OK 73105  
[www.ohso.ok.gov](http://www.ohso.ok.gov) Phone: 405/523-1570 Fax: 405/523-1586

### Exclusions

This fact sheet includes only persons inside a vehicle that rolled in a crash. All other vehicles and persons that may have been in the crash are excluded.

### Rollover Vehicles

In 2008 there were 4,199 vehicles that rolled in traffic crashes. There were 235 fatalities (165 drivers and 75 passengers) and 3,779 persons injured in vehicles that rolled.

### Number of Vehicles

Of the 4,194 crashes involving a vehicle that rolled, 83.7% involved only one vehicle, 14.9% involved two vehicles and 1.4% involved three or more vehicles.

### Driver Contributing Factors

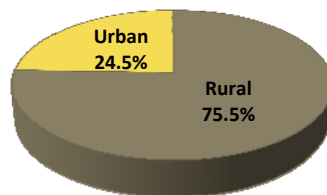
Of the 4,199 vehicles that rolled, 40.2% were attributed to Unsafe Speed, 12.3% were DUI/Alcohol and 12.1% were Inattention. The table below denotes the various categories for the primary Contributing Factor of Unsafe Speed.

Unsafe Speed Contributing Factor For Drivers in Rolled Vehicles (2008)		
Unsafe Speed	Drivers	Percent of Total
Unsafe Speed - Driver's Ability (Age)	21	1.2
Unsafe Speed - Inexperienced Driver (Young)	67	4.0
Unsafe Speed - Exceeding Legal Limit	208	12.3
Unsafe Speed - For Traffic Conditions	75	4.4
Unsafe Speed - For Type of Roadway	302	17.9
Unsafe Speed - For Ice or Snow on Roadway	359	21.3
Unsafe Speed - Rain or Wet Roadway	186	11.0
Unsafe Speed - Wind	24	1.4
Unsafe Speed - Other Weather Conditions	10	.6
Unsafe Speed - Vehicle Condition	24	1.4
Unsafe Speed - View Obstruction	8	.5
Unsafe Speed - On Curve/Turn	331	19.6
Unsafe Speed - Other	73	4.3
<b>Total</b>	<b>1688</b>	<b>100.0</b>

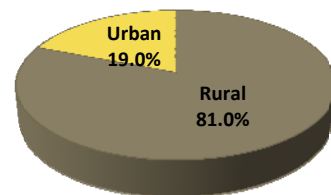
### Rural vs. Urban

Crashes involving a rollover vehicle occurred mostly in rural areas. Some 75.5% of the crashes involving a vehicle that rolled occurred in rural areas; as did 81.0% of the fatal crashes involving a rolled vehicle.

Rollover Crashes (2008)  
Rural vs. Urban

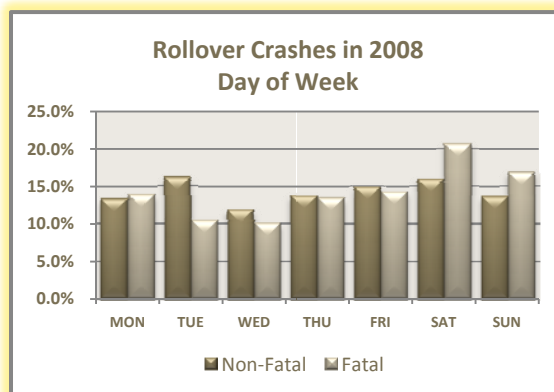
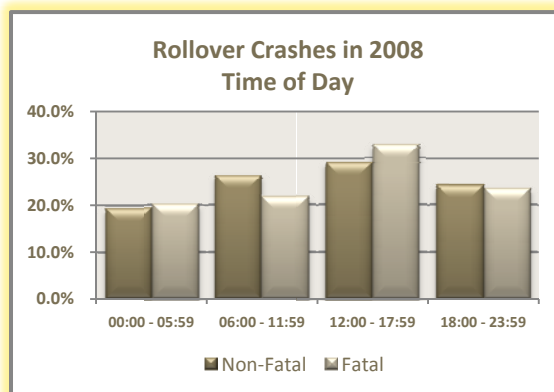


Fatal Rollover Crashes (2008)  
Rural vs. Urban



### Time & Day

Crashes involving a rolled vehicle occurred more often between 12:00 Noon and 17:59 p.m., whether it was a fatal or non-fatal crash. With the exception of Tuesday, these type crashes occurred more often during weekends than any other days of the week, whether or not a fatality was involved.



## Drivers

In 2008, there were 4,199 drivers in vehicles that rolled in a crash. The table below shows the driver age and driver gender. Some 23.0% of the drivers of a vehicle that rolled were age 16-20, 16.5% were age 21-25 and 11.1% were age 26-30.

Drivers in Vehicles that Rolled (2008) Driver Age & Driver Gender				
Driver Age	Unknown	Female	Male	Total
Unknown	82	1	3	86
Under 16		15	9	24
16 - 20		383	583	966
21 - 25		215	476	691
26 - 30		142	322	464
31 - 35		124	265	389
36 - 40		121	192	313
41 - 45		112	218	330
46 - 50		90	180	270
51 - 55		68	158	226
56 - 60		49	110	159
61 - 65		43	74	117
66 - 70		30	45	75
71 - 75		20	31	51
76 - 80		7	13	20
81+		7	11	18
<b>Total</b>	<b>82</b>	<b>1,427</b>	<b>2,690</b>	<b>4,199</b>

## Drivers – Alcohol Condition

In 2008, 19.0% (796 of 4,199) of the drivers in vehicles that rolled had an Alcohol-Related Driver Condition. The table below lists the age and gender of these drivers.

Drivers in Vehicles that Rolled (2008) Alcohol-Related Driver Condition Driver Age & Driver Gender				
Driver Age	Unknown	Female	Male	Total
Unknown	1	1		2
Under 16			1	1
16 - 20		27	109	136
21 - 25		48	138	186
26 - 30		22	100	122
31 - 35		22	67	89
36 - 40		15	53	68
41 - 45		16	51	67
46 - 50		15	43	58
51 - 55		4	26	30
56 - 60			16	16
61 - 65		2	9	11
66 +		3	7	10
<b>Total</b>	<b>1</b>	<b>175</b>	<b>620</b>	<b>796</b>

Some 55.8% (444 of 796) of the total drivers with an Alcohol-Related Driver Condition were under the age of 31 and 77.9% (620 of 796) of the total drivers were male.

## Safety Equipment Use Among Fatalities

In 2008, of the 4,199 drivers in vehicles that rolled, 86.3% (3,624 of 4,199) were in a passenger vehicle/pickup truck. Of the 3,624 drivers in passenger vehicles/pickup trucks, 141 were killed. Of the 141 drivers killed, 70.9% (100 of 141) were not using safety equipment.

Of the 1,448 passengers in vehicles that rolled, 90.3% (1,308 of 1,448) were in a passenger vehicle/pickup truck. Of the 1,308 passengers in passenger vehicles/pickup trucks, 64 were killed. Of the 64 passengers killed, 82.8% (53 of 64) were not using safety equipment.

Safety Equipment Use Among Fatalities In Rolled Vehicles in 2008 Crashes					
Person Type	Vehicle Type	Safety Equipment			
		Unknown	Not In Use	In Use	Total
Driver	Pass Veh/Pickup	5	100	36	141
	Other Vehicle	5	10	4	19
	<b>Total</b>	<b>10</b>	<b>110</b>	<b>40</b>	<b>160</b>
Passenger	Pass Veh/Pickup	2	53	9	64
	Other Vehicle	2	9		11
	<b>Total</b>	<b>4</b>	<b>62</b>	<b>9</b>	<b>75</b>
Drivers & Passengers	Pass Veh/Pickup	7	153	45	205
	Other Vehicle	7	19	4	30
	<b>Total</b>	<b>14</b>	<b>172</b>	<b>49</b>	<b>235</b>

## Drivers Ejected

In 2008, of the 291 drivers ejected from a vehicle that rolled, 94.2% (274 of 291) were killed or severely injured. Of the 274 ejected, 91.6% (251 of 274) were not using restraints.

Drivers Ejected from Rolled Vehicles in 2008 Crashes Safety Equipment Use					
Injury Severity	Ejected	Safety Equipment			
		Unknown	Not In Use	In Use	Total
Fatality	Partially	1	21	2	24
	<b>Totally</b>	<b>1</b>	<b>63</b>	<b>1</b>	<b>65</b>
	<b>Totals</b>	<b>2</b>	<b>84</b>	<b>3</b>	<b>89</b>
Injury	Partially	2	16	6	24
	<b>Totally</b>	<b>6</b>	<b>151</b>	<b>4</b>	<b>161</b>
	<b>Totals</b>	<b>8</b>	<b>167</b>	<b>10</b>	<b>185</b>
Fatality & Injury	Partially	3	37	8	48
	<b>Totally</b>	<b>7</b>	<b>214</b>	<b>5</b>	<b>226</b>
	<b>Totals</b>	<b>10</b>	<b>251</b>	<b>13</b>	<b>274</b>

Injury includes incapacitating and non-incapacitating injuries.