

Motorcyclists in Crashes (2011)

Oklahoma Highway Safety Fact Sheet

Oklahoma
Department of Public Safety
Highway Safety Office

3223 N. Lincoln Blvd.
Oklahoma City, OK 73105

Phone: 405.523.1570
Fax: 405.523.1586

www.ohso.ok.gov

- ▶ 9.5% of the motorcycle operators involved in crashes had been drinking
- ▶ Motorcyclist fatalities increased 26.7% from 75 in 2010 to 95 in 2011
- ▶ Motorcycle driver license endorsements increased 3.0% from 2010 to 2011
- ▶ 22.1% of motorcycle operators involved in crashes were driving at an unsafe speed



Motorcycle Fatal Crashes & Fatalities Five-Year Trend					
	2007	2008	2009	2010	2011
Motorcycle Fatal Crashes	70	85	102	73	88
Total Fatal Crashes	653	673	646	616	609
Motorcycle Fatal Crashes as Percentage of Total Fatal Crashes	10.7%	12.6%	15.8%	11.9%	14.4%
Motorcyclist Fatalities	74	87	105	75	95
Total Fatalities	770	751	737	668	696
Motorcyclist Fatalities as Percentage of Total Fatalities	9.6%	11.6%	14.2%	11.2%	13.6%

Definitions

A *motorcycle operator* is the person in control of the motorcycle.

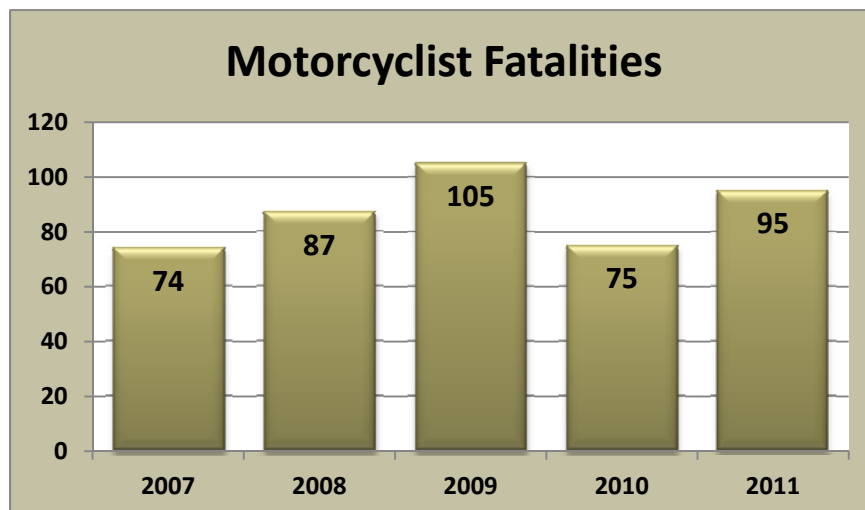
Passenger is any person seated on the motorcycle but not in control of the motorcycle.

Motorcyclist(s) is any combined reference to the motorcycle operator as well as the passenger.

Injury includes incapacitating injury, non-incapacitating injury and possible injury.

Fatalities & Injuries

In 2011, there were 88 fatal crashes that resulted in 95 motorcyclist fatalities. In addition, 1,223 injury crashes resulted in 1,355 injured motorcyclists.



Registrations & Licenses

In 2011, there were 127,140 registered motorcycles according to the Oklahoma Tax Commission, Motor Vehicle Division. This is a 1.8% increase over the 124,926 registered motorcycles in 2010.

Motorcycle endorsements on Oklahoma driver licenses increased from 205,436 in 2010 to 211,568 in 2011, a 3.0% increase.

Fatalities & Helmet Use

Of the 95 motorcyclists killed in 2011 crashes, 67.4% were not wearing a helmet. Helmet use for another 12.6% of the motorcyclist fatalities was unknown. Of the 64 motorcyclists killed and not wearing a helmet, 81.3% were male.

Fatalities Age & Sex

Ninety-six percent of motorcycle operators killed in 2011 crashes were male. Of these, 26.6% were age 46-55, 21.5% were age 56-65, 19.0% were age 36-45, and 19.0% were age 26-35.

Operator Age & Sex

Of the motorcycle operators involved in crashes in 2011, 21.9% were age 46-55, 20.9% were age 36-45 and 19.4% were age 26-35. The vast majority (95.1%) of motorcycle operators involved in crashes were male.

The majority (57.3%) of female motorcycle operators involved in crashes were age 36-55. Of the male motorcycle operators, 21.5% were age 46-55, 20.5% were age 36-45 and 19.7% were age 26-35.

Motorcyclist Fatalities (2011) Person Type, Sex & Helmet Use					
		Helmet Use			Total
		Unknown	Not In Use	Helmet	
Operator	Unknown				
	Female		1	2	3
	Male	11	52	16	79
	Total	11	53	18	82
Passenger	Unknown				
	Female	1	11	1	13
	Male				
	Total	1	11	1	13
Total	Unknown				
	Female	1	12	3	16
	Male	11	52	16	79
	Total	12	64	19	95

Motorcyclist Fatalities (2011) Person Type, Person Age					
Person Type	Person Age	Person Sex			
		Female	Male	Total	
Operator	Under 16	1		1	
	16 – 25		8	8	
	26 – 35		15	15	
	36 – 45	1	15	16	
	46 – 55	1	21	22	
	56 – 65		17	17	
	66 – 75		2	2	
	76+		1	1	
	Total		3	79	82
	Passenger	Under 16			
16 – 25		1		1	
26 – 35		4		4	
36 – 45		2		2	
46 – 55		1		1	
56 – 65		4		4	
66 – 75		1		1	
76+					
Total			13	13	
Total		Under 16	1		1
	16 - 25	1	8	9	
	26 - 35	4	15	19	
	36 - 45	3	15	18	
	46 - 55	2	21	23	
	56 - 65	4	17	21	
	66 - 75	1	2	3	
	76+		1	1	
	Total		16	79	95

Motorcycle Operators in Crashes (2011) Operator Age & Operator Sex						
Operator Age	Operator Sex				Total	
	Female		Male			
	Number	% of Total	Number	% of Total	Number	% of Total
Under 16	1	1.3%	14	1.0%	15	1.0%
16 - 25	13	17.3%	251	17.1%	264	17.1%
26 - 35	11	14.7%	288	19.7%	299	19.4%
36 - 45	21	28.0%	301	20.5%	322	20.9%
46 - 55	22	29.3%	315	21.5%	337	21.9%
56 - 65	6	8.0%	228	15.6%	234	15.2%
66 - 75	1	1.3%	61	4.2%	62	4.0%
76+			7	0.5%	7	0.5%
Total	75	100.0%	1465	100.0%	1540	100.0%

Excludes 19 operators with unknown age and/or sex.

Operator Condition

Some 9.5% (146 of 1,540) of the motorcycle operators involved in crashes had an alcohol-related driver condition. Of those with an alcohol-related driver condition, 96.6% were male. Of the operators with an alcohol-related driver condition, 27.4% were age 26-35, 25.3% were age 46-55 and 24.0% were age 36-45.

Motorcycle Operators in Crashes (2011) Operator Age, Sex and Driver Condition (Alcohol-Related)												
Operator Age	Not Alcohol-Related				Total		Alcohol-Related				Total	
	Female		Male				Female		Male			
	Number	% of Total	Number	% of Total	Number	% of Total	Number	% of Total	Number	% of Total	Number	% of Total
Under 16	1	1.4%	14	1.1%	15	1.1%						
16 - 25	13	18.6%	235	17.7%	248	17.8%			16	11.3%	16	11.0%
26 - 35	11	15.7%	248	18.7%	259	18.6%			40	28.4%	40	27.4%
36 - 45	18	25.7%	269	20.3%	287	20.6%	3	60.0%	32	22.7%	35	24.0%
46 - 55	20	28.6%	280	21.1%	300	21.5%	2	40.0%	35	24.8%	37	25.3%
56 - 65	6	8.6%	212	16.0%	218	15.6%			16	11.3%	16	11.0%
66 - 75	1	1.4%	59	4.5%	60	4.3%			2	1.4%	2	1.4%
76+			7	0.5%	7	0.5%						
Total	70	100.0%	1324	100.0%	1394	100.0%	5	100.0%	141	100.0%	146	100.0%

Excludes 19 operators with unknown age and/or sex.

Motorcycle Operator Contributing Factor

Some 22.1% of motorcycle operators in 2011 crashes were driving at an unsafe speed, 7.2% made an improper act or movement, 5.1% had an alcohol-related driver condition and 5.0% were following too closely.

A closer look at the primary contributing factor of unsafe speed by motorcycle operators shows that 41.6% were driving at an unsafe speed on a curve or turn, 16.0% were exceeding the legal limit and 15.1% were driving at an unsafe speed for traffic conditions.

Motorcycle Operators in Crashes (2011) Operator Contributing Factor		
Contributing Factor	Operators	% of Total
Changed Lanes Unsafely	14	0.9%
Failed To Stop	12	0.8%
Failed To Yield	42	2.7%
Followed Too Closely	78	5.0%
Improper Overtaking	15	1.0%
Improper Parking	0	0.0%
Improper Start	1	0.1%
Improper Turn	16	1.0%
Inattention	67	4.3%
Left of Center	20	1.3%
No Improper Action by Driver	717	46.0%
Other Improper Act/Movement	113	7.2%
Stopped in Traffic Lane	1	0.1%
Unsafe Speed	344	22.1%
Unsafe Vehicle	34	2.2%
Wrong Way	2	0.1%
DUI-Alcohol	79	5.1%
DUI-Drugs	4	0.3%
Total	1559	100.0%

Motorcycle Operators in Crashes (2011) Contributing Factor of Unsafe Speed		
Contributing Factor	Operators	% of Total
Unsafe Speed - Driver's Ability (Age)	3	0.9%
Unsafe Speed - Inexperienced Driver (Young)	23	6.7%
Unsafe Speed - Exceeding Legal Limit	55	16.0%
Unsafe Speed - For Traffic Conditions	52	15.1%
Unsafe Speed - For Type of Roadway	14	4.1%
Unsafe Speed - Rain or Wet Roadway	13	3.8%
Unsafe Speed - Wind	6	1.7%
Unsafe Speed - Other Weather Conditions		0.0%
Unsafe Speed - Vehicle Condition	2	0.6%
Unsafe Speed - View Obstruction	2	0.6%
Unsafe Speed - On Curve/Turn	143	41.6%
Unsafe Speed - Impeding Traffic	2	0.6%
Unsafe Speed - Other	29	8.4%
Total	344	100.0%

Time & Day

In 2011 there were a total of 1,524 motorcycle crashes of which 88 were fatal and 1,223 involved injury.

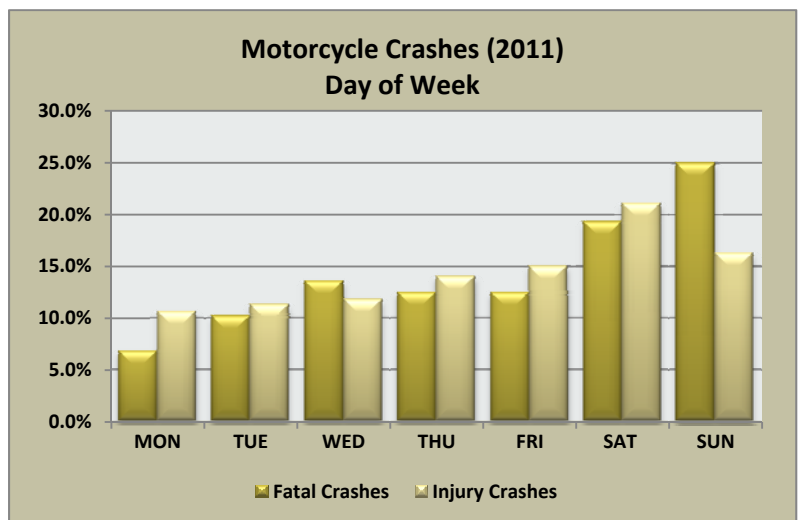
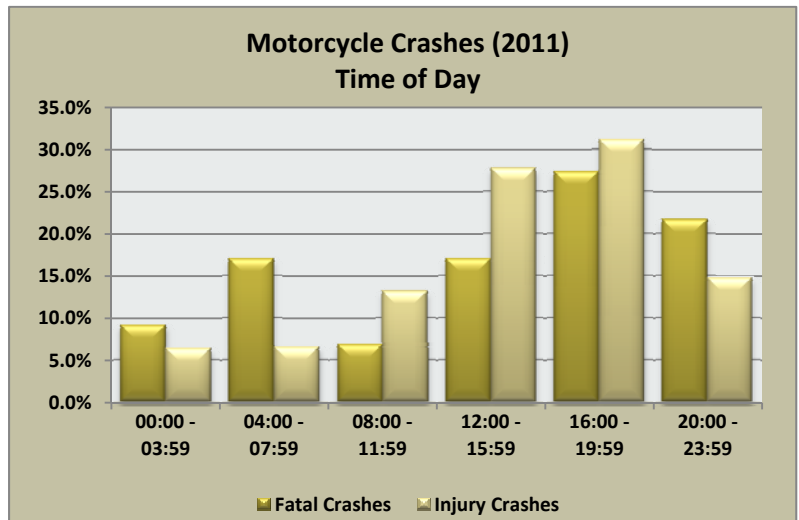
Both fatal and injury crashes occurred more often between 4:00 p.m. (16:00) and 6:59 p.m. (19:59).

Fatal crashes occurred more frequently on Sunday while injury crashes occurred more often on Saturday.

Number of Vehicles Involved

Some 53.4% of fatal motorcycle crashes involved only the motorcycle, 40.9% involved the motorcycle and one other vehicle and 5.7% involved the motorcycle and two other vehicles.

Some 49.5% of injury motorcycle crashes involved only the motorcycle, 48.3% involved the motorcycle and one other vehicle and 2.1% involved the motorcycle and three or more vehicles.



Motorcyclists in Crashes (2011) By County & Person Injury Severity							
County	Person Injury Severity						Total
	Fatal	Incapacitating	Non-incapacitating	Possible	None	Unknown	
Adair		2	2				4
Alfalfa		2	5		1		8
Atoka					2		2
Beaver			2	1	2		5
Beckham	1	2	2	3	1		9
Blaine		1			2		3
Bryan		2	15	4	5		26
Caddo		3	4	1			8
Canadian	4	5	14	5	10		38
Carter	2	5	14	4	7		32
Cherokee		8	3	3	4		18
Choctaw	1	1	1				3
Cimarron			1				1
Cleveland	2	26	39	9	15	2	93
Coal		2					2
Comanche	3	27	25	15	14	2	86
Cotton		1	1				2
Craig		2	1				3
Creek	1	2	5	11	6	1	26
Custer	4	4	4	1	1		14
Delaware	3	11	10	5	4		33
Dewey							
Ellis							
Garfield		7	11	4	7	1	30
Garvin	4	1	8				13
Grady	2	7	11	3	3		26
Grant		1					1
Greer				1			1
Harmon		1	1				2
Harper							
Haskell	3	3	2				8
Hughes			3				3
Jackson		2	1	1	2		6
Jefferson	1		2				3
Johnston		1	2	1	1	1	6
Kay	1	6	7	1			15
Kingfisher	1	1	1				3
Kiowa			1		1		2
Latimer		1	4	1			6
LeFlore	2	15	6	6	7	1	37

Motorcyclists in Crashes (2011) By County & Person Injury Severity							
County	Person Injury Severity						Total
	Fatal	Incapacitating	Non-incapacitating	Possible	None	Unknown	
Lincoln		4	1	3	1		9
Logan	1	4	6		5		16
Love		2	1				3
McClain	1	1	7	2	2	1	14
McCurtain	2	4	5	2	1		14
McIntosh	2	2	1	3	1	1	10
Major			2	1			3
Marshall		2	1				3
Mayes	5	16	17	2	4		44
Murray			5	3	3		11
Muskogee	2	7	17	5	4	1	36
Noble		3	6	1	1		11
Nowata		1	1	2			4
Okfuskee		1	1				2
Oklahoma	16	81	139	59	60	10	365
Okmulgee	3	1	2	4	1		11
Osage	1	4	12	5	1		23
Ottawa		3	8	3	2		16
Pawnee	1	5	1				7
Payne	2	11	15	6	4		38
Pittsburg	1	12	4	4	2		23
Pontotoc		8	9	1	3	1	22
Pottawatomie	2	11	11	7	4	1	36
Pushmataha	1	4	5		3		13
Roger Mills							
Rogers	1	8	17	4	3		33
Seminole	2		1	1	1		5
Sequoyah		6	7	2	5	1	21
Stephens		6	4	4	3		17
Texas		1	1	1			3
Tillman		1					1
Tulsa	14	55	117	61	38	11	296
Wagoner	1	6	4	2	7		20
Washington		2	15	1	6		24
Washita	2		3				5
Woods		1	1				2
Woodward			4	2	1		7
Total	95	425	659	271	261	35	1746