

# Motorcyclists in Crashes (2010)

Oklahoma Highway Safety Fact Sheet

Oklahoma  
Department of Public Safety  
Highway Safety Office

3223 N. Lincoln Blvd.  
Oklahoma City, OK 73105

Phone: 405.523.1570  
Fax: 405.523.1586

[www.ohso.ok.gov](http://www.ohso.ok.gov)

- ▶ 9.2% of the motorcycle operators involved in crashes had been drinking
- ▶ Motorcyclist fatalities decreased 28.6% from 105 in 2009 to 75 in 2010
- ▶ Motorcycle driver license endorsements increased 7.1% from 2009 to 2010
- ▶ 24.2% of motorcycle operators involved in crashes were driving at an unsafe speed



Motorcycle Fatal Crashes & Fatalities Five-Year Trend					
	2006	2007	2008	2009	2010
Motorcycle Fatal Crashes	61	70	85	102	73
Total Fatal Crashes	668	653	673	646	616
Motorcycle Crashes as Percentage of Total Fatal Crashes	9.1%	10.7%	12.6%	15.8%	11.9%
Motorcyclist Fatalities	65	74	87	105	75
Total Fatalities	765	770	751	737	668
Motorcyclist Fatalities as Percentage of Total Fatalities	8.5%	9.6%	11.6%	14.2%	11.2%

## Definitions

A *motorcycle operator* is the person in control of the motorcycle.

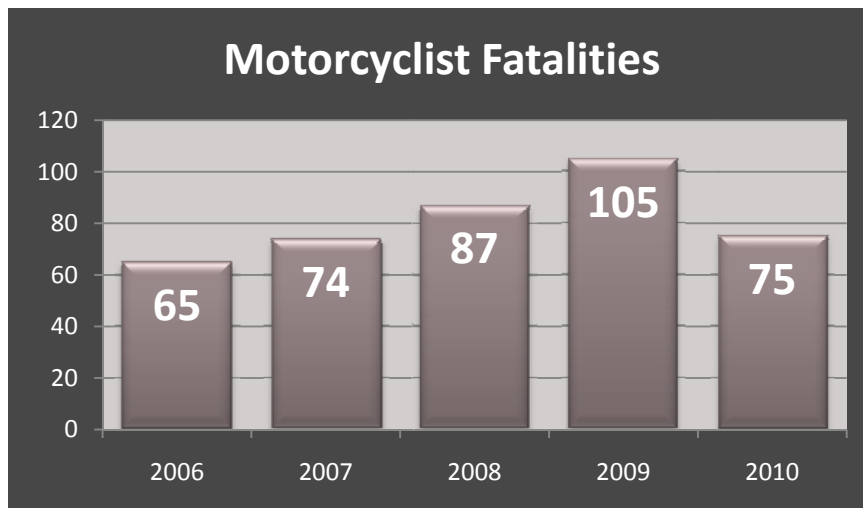
*Passenger* is any person seated on the motorcycle but not in control of the motorcycle.

*Motorcyclist(s)* is any combined reference to the motorcycle operator as well as the passenger.

*Injury* includes incapacitating injury, non-incapacitating injury and possible injury.

## Fatalities & Injuries

In 2010, there were 73 fatal crashes that resulted in 75 motorcyclist fatalities. In addition, 1,220 injury crashes resulted in 1,377 injured motorcyclists.



## Registrations & Licenses

In 2010, there were 124,926 registered motorcycles according to the Oklahoma Tax Commission, Motor Vehicle Division. This is less than a one percent increase over the 123,906 registered motorcycles in 2009.

Driver license motorcycle endorsements increased from 191,789 in 2009 to 205,436 in 2010, a 7.1% increase.

**Fatalities & Helmet Use**

Of the 75 motorcyclists killed in 2010 crashes, 77.3% were not wearing a helmet. Helmet use for another 5.3% of the motorcyclist fatalities was unknown. Of the 58 motorcyclists killed and not wearing a helmet, 91.4% were male.

**Fatalities Age & Sex**

All the motorcycle operators killed in 2010 crashes were male. Of these, 34.3% were age 46-55, 21.4% were age 36-45, 14.3% were age 56-65 and 14.3% were age 16-25.

**Operator Age & Sex**

Of the motorcycle operators involved in crashes in 2010, 22.0% were age 46-55, 19.8% were age 16-25 and 18.9% were age 26-35. The vast majority (95.4%) of motorcycle operators involved in crashes were male.

The majority (63.3%) of female motorcycle operators involved in crashes were age 36-55. However, the age span for male motorcycle operators had a wider distribution. Age groups 16-25, 26-35, 34-45, and 46-55 ranged from 18.9% to 21.5% with age group 46-55 having the highest percentage at 21.5%.

Motorcyclist Fatalities (2010) Person Type, Sex & Helmet Use					
		Helmet Use			Total
		Unknown	Not In Use	Helmet	
Driver	Unknown				
	Female				
	Male	4	53	13	70
	Total	4	53	13	70
Passenger	Unknown				
	Female		5		5
	Male				
	Total		5		5
Total	Unknown				
	Female		5		5
	Male	4	53	13	70
	Total	4	58	13	75

Motorcyclist Fatalities (2010) Person Type, Person Age					
Person Type	Person Age	Person Sex			
		Female	Male	Total	
Driver	Under 16		2	2	
	16 - 25		10	10	
	26 - 35		7	7	
	36 - 45		15	15	
	46 - 55		24	24	
	56 - 65		10	10	
	66 - 75		1	1	
	76+		1	1	
	Total			70	70
	Passenger	Under 16			
16 - 25					
26 - 35		2		2	
36 - 45		1		1	
46 - 55		1		1	
56 - 65		1		1	
66 - 75					
76+					
Total			5		5
Total		Under 16		2	2
	16 - 25		10	10	
	26 - 35	2	7	9	
	36 - 45	1	15	16	
	46 - 55	1	24	25	
	56 - 65	1	10	11	
	66 - 75		1	1	
	76+		1	1	
	Total		5	70	75

Motorcycle Operators in Crashes (2010) Operator Age & Operator Sex						
Operator Age	Operator Sex				Total	
	Female		Male			
	Number	% of Total	Number	% of Total	Number	% of Total
Under 16	1	1.5%	26	1.9%	27	1.8%
16 - 25	7	10.3%	283	20.2%	290	19.8%
26 - 35	9	13.2%	268	19.2%	277	18.9%
36 - 45	21	30.9%	265	18.9%	286	19.5%
46 - 55	22	32.4%	301	21.5%	323	22.0%
56 - 65	6	8.8%	204	14.6%	210	14.3%
66 - 75	1	1.5%	46	3.3%	47	3.2%
76+	1	1.5%	6	0.4%	7	0.5%
Total	68	100.0%	1399	100.0%	1467	100.0%

Excludes 14 operators with unknown age.

**Operator Condition**

Some 9.2% (135 of 1,467) of the motorcycle operators involved in crashes had an alcohol-related driver condition. Of those with an alcohol-related driver condition, 97.0% were male. Of the operators with an alcohol-related driver condition, 32.1% were age 46-55, 20.6% were age 16-25, 19.8% were age 26-35 and 19.8% were age 36-45.

Motorcycle Operators in Crashes (2010) Operator Age, Sex and Driver Condition (Alcohol-Related)												
Operator Age	Not Alcohol-Related				Total		Alcohol-Related				Total	
	Female		Male				Female		Male			
	Number	% of Total	Number	% of Total	Number	% of Total	Number	% of Total	Number	% of Total	Number	% of Total
Under 16	1	1.6%	26	2.1%	27	2.0%						
16 - 25	7	10.9%	256	20.2%	263	19.7%			27	20.6%	27	20.0%
26 - 35	8	12.5%	242	19.1%	250	18.8%	1	25.0%	26	19.8%	27	20.0%
36 - 45	20	31.2%	239	18.8%	259	19.4%	1	25.0%	26	19.8%	27	20.0%
46 - 55	20	31.2%	259	20.4%	279	20.9%	2	50.0%	42	32.1%	44	32.6%
56 - 65	6	9.4%	195	15.4%	201	15.1%			9	6.9%	9	6.7%
66 - 75	1	1.6%	45	3.5%	46	3.5%			1	0.8%	1	0.7%
76+	1	1.6%	6	0.5%	7	0.5%						
Total	64	100.0%	1268	100.0%	1332	100.0%	4	100.0%	131	100.0%	135	100.0%

Excludes 14 operators with unknown age.

**Motorcycle Operator Contributing Factor**

Some 24.2% of motorcycle operators in 2010 crashes were driving at an unsafe speed, 7.4% made an improper act or movement and 5.3% were inattentive.

A closer look at the primary contributing factor of unsafe speed by motorcycle operators shows that 44.8% were driving at an unsafe speed on a curve or turn, 14.5% were exceeding the legal limit and 14.2% were driving at an unsafe speed for traffic conditions.

Motorcycle Operators in Crashes (2010) Operator Contributing Factor		
Contributing Factor	Operators	% of Total
Changed Lanes Unsafely	19	1.3%
Failed To Stop	19	1.3%
Failed To Yield	29	2.0%
Followed Too Closely	61	4.1%
Improper Overtaking	17	1.1%
Improper Parking	1	.1%
Improper Start	4	.3%
Improper Turn	18	1.2%
Inattention	79	5.3%
Left of Center	20	1.4%
No Improper Action by Driver	668	45.1%
Other Improper Act/Movement	109	7.4%
Stopped in Traffic Lane	1	.1%
Unsafe Speed	359	24.2%
Unsafe Vehicle	16	1.1%
Wrong Way	1	.1%
DUI-Alcohol	56	3.8%
DUI-Drugs	4	.3%
Total	1481	100.0%

Motorcycle Operators in Crashes (2010) Contributing Factor of Unsafe Speed		
Contributing Factor	Operators	% of Total
Unsafe Speed - Driver's Ability (Age)	6	1.7%
Unsafe Speed - Inexperienced Driver (Young)	20	5.6%
Unsafe Speed - Exceeding Legal Limit	52	14.5%
Unsafe Speed - For Traffic Conditions	51	14.2%
Unsafe Speed - For Type of Roadway	27	7.5%
Unsafe Speed - Rain or Wet Roadway	10	2.8%
Unsafe Speed - Wind	1	.3%
Unsafe Speed - Other Weather Conditions	2	.6%
Unsafe Speed - Vehicle Condition	2	.6%
Unsafe Speed - View Obstruction	2	.6%
Unsafe Speed - On Curve/Turn	161	44.8%
Unsafe Speed - Impeding Traffic	1	.3%
Unsafe Speed - Other	24	6.7%
Total	359	100.0%

**Time & Day**

In 2010 there were a total of 1,444 motorcycle crashes of which 73 were fatal and 1,220 involved injury.

Fatal crashes occurred most often between 4:00 p.m. (16:00) and 11:59 p.m. (23:59).

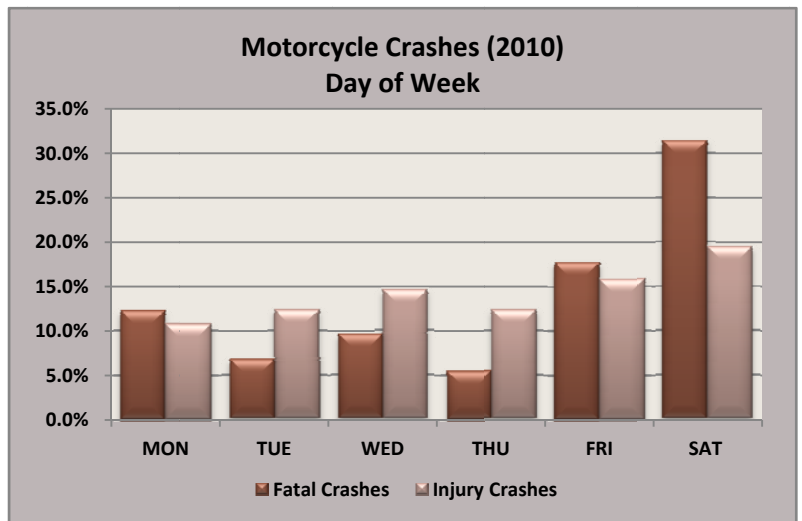
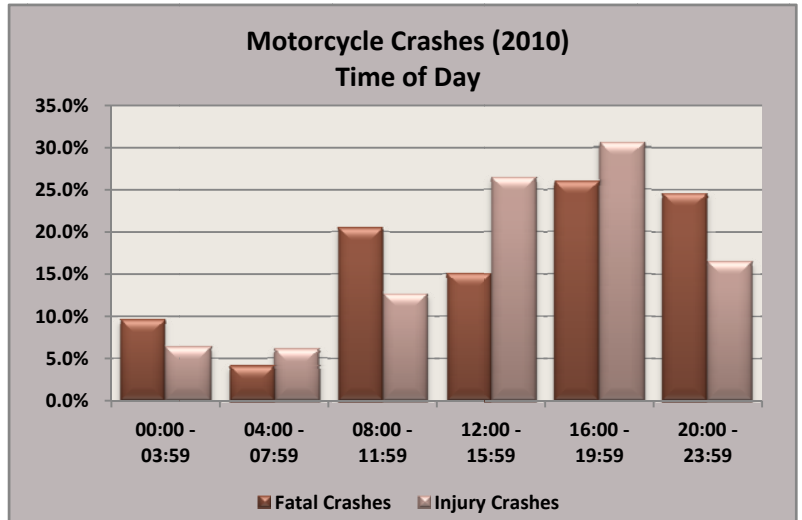
Injury crashes occurred most often between 12:00 Noon (12:00) and 7:59 p.m. (19:59).

Fatal and injury crashes occurred most often on Friday.

**Number of Vehicles Involved**

Some 43.8% of fatal motorcycle crashes involved only the motorcycle, 50.7% involved the motorcycle and one other vehicle and 5.5% involved three vehicles.

Some 51.3% of injury motorcycle crashes involved only the motorcycle, 45.9% involved the motorcycle and one other vehicle and 2.8% involved the motorcycle and three or more vehicles.



Motorcyclists in Crashes (2010) By County & Person Injury Severity							
County	Person Injury Severity						Total
	Fatal	Incapacitating	Non-incapacitating	Possible	None	Unknown	
Adair		2	1				3
Alfalfa		1	1	1			3
Atoka		2	1	1		1	5
Beaver				1			1
Beckham			3	1	1		5
Blaine		1			1		2
Bryan		6	9	4	5		24
Caddo	1		9	2			12
Canadian	3	14	16	1	3		37
Carter	1	9	12	1	4		27
Cherokee	5	8	14	8	3		38
Choctaw			2	1			3
Cimarron	1		3	1	2		7
Cleveland	2	25	45	11	8	1	92
Coal	1		1				2
Comanche		27	37	13	12		89
Cotton	1		1				2
Craig		3	1		1		5
Creek	1	6	10	4			21
Custer		1	3		1	1	6
Delaware	4	9	10		4		27
Dewey		1	1				2
Ellis		1					1
Garfield		6	21	4	13		44
Garvin	1	5	5		1		12
Grady	3	10	9	4	2		28
Grant		1	2				3
Greer		1					1
Harmon			1				1
Harper			1		1		2
Haskell		1	1	2	1		5
Hughes	1		1				2
Jackson			5	3			8
Jefferson							
Johnston		2					2
Kay	1	6	8	2			17
Kingfisher		1	2	1			4
Kiowa							
Latimer		3	1				4
LeFlore	1	15	9	12	3		40
Lincoln		7	7		3		17
Logan		7	3				10
Love		2	2		4		8
McClain	1	9	2	2	4		18

Motorcyclists in Crashes (2010) By County & Person Injury Severity							
County	Person Injury Severity						Total
	Fatal	Incapacitating	Non- incapacitating	Possible	None	Unknown	
McCurtain	2	1	2	3	1		9
McIntosh		5	2	2	2		11
Major		4	2				6
Marshall		2	1	1	3		7
Mayes	3	6	12	1	1		23
Murray		1	6	1			8
Muskogee		2	10	5	5		22
Noble		2	2	1	2		7
Nowata			2	1			3
Okfuskee		2	3				5
Oklahoma	13	65	136	58	30	4	306
Okmulgee		1	2	7		1	11
Osage	2	7	6	5	1		21
Ottawa	2	5	7	4	4		22
Pawnee	1		1				2
Payne	4	4	18	6	7		39
Pittsburg		7	9	6	2		24
Pontotoc		2	4		1		7
Pottawatomie	2	6	20	5	2		35
Pushmataha		2	9	2			13
Roger Mills							
Rogers	3	13	14	2	4		36
Seminole	1	2	4	1	1		9
Sequoyah	3	7	4		3		17
Stephens	2	4	8	2	2		18
Texas	1			1			2
Tillman							
Tulsa	6	79	117	48	37	6	293
Wagoner	2	3	10	10	4		29
Washington		5	15	4	5		29
Washita		1					1
Woods		1	1		1		3
Woodward			2	1	1		4
Total	75	431	689	257	196	14	1662