

# Motorcyclists in 2009 Crashes



Oklahoma Department of Public Safety | Highway Safety Office | 3223 N. Lincoln Blvd | Oklahoma City, OK 73105  
[www.ohso.ok.gov](http://www.ohso.ok.gov) | Phone: 405/523-1570 | Fax: 405/523-1586

*In 2009, motorcyclist fatalities represent 14.2% of the total fatalities, the highest percentage since 2005.*

## Definitions

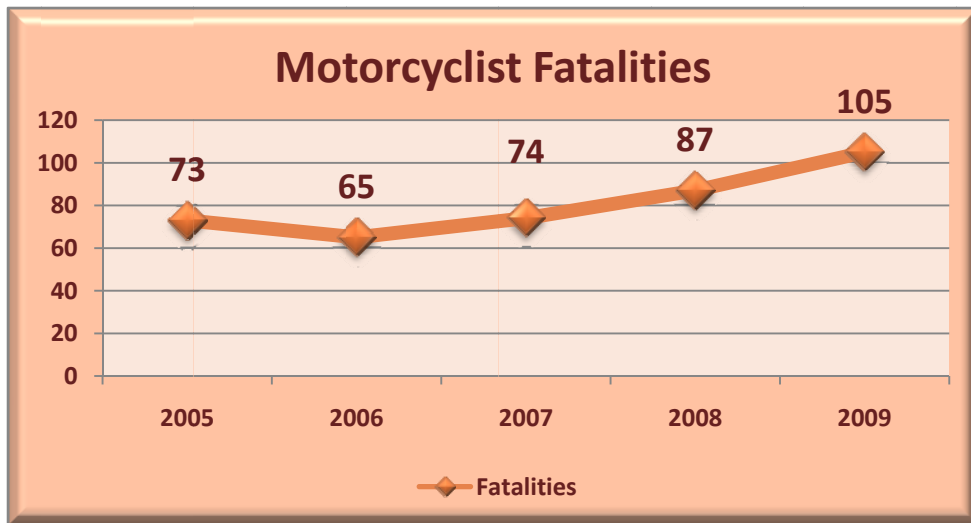
A **motorcycle operator** is the person in control of the motorcycle.

**Passenger** is any person seated on the motorcycle but not in control of the motorcycle.

**Motorcyclist(s)** refers to any combined reference to the motorcycle operator as well as the passenger.

**Injury** includes incapacitating injury, non-incapacitating injury and possible injury.

| Motorcycle Fatal Crashes & Fatalities<br>Five-Year Trend  |       |      |       |       |       |
|---|-------|------|-------|-------|-------|
|   | 2005  | 2006 | 2007  | 2008  | 2009  |
| Motorcycle Fatal Crashes                                  | 72    | 61   | 70    | 85    | 102   |
| Total Fatal Crashes                                       | 708   | 668  | 653   | 673   | 646   |
| Motorcycle as Percentage of Total Fatal Crashes           | 10.2% | 9.1% | 10.7% | 12.6% | 15.8% |
| Motorcyclist Fatalities                                   | 73    | 65   | 74    | 87    | 105   |
| Total Fatalities  | 800   | 765  | 770   | 751   | 737   |
| Motorcyclist Fatalities as Percentage of Total Fatalities | 9.1%  | 8.5% | 9.6%  | 11.6% | 14.2% |



## Fatalities & Injuries

In Oklahoma in 2009, there were 102 fatal crashes involving a motorcycle. These crashes resulted in 105 motorcyclist fatalities and 12 motorcyclists injured. Of the 105 fatalities, 93 were operators and 12 were passengers.

There were 1,129 motorcycle crashes involving an injured motorcyclist. These crashes resulted in 1,324 motorcyclists injured. Of the 1,324 motorcyclists injured 1,157 were operators and 167 were passengers.

### Registration & Licenses

In 2009, there were 123,906 registered motorcycles according to the Oklahoma Tax Commission, Motor Vehicle Division. This is a 7.4% increase over the 115,381 registered motorcycles in 2008.

Motorcycle endorsements on Oklahoma driver licenses increased from 181,488 in 2008 to 191,789 in 2009, a 5.7% increase.

### Fatalities & Helmet Use

Of the 105 motorcyclists killed in 2009 crashes, 64.8% (68 of 105) were not wearing helmets. Helmet use for another 8.6% (9 of 105) was unknown. Of the 58 operators killed and unhelmeted, 94.8% (55 of 58) were male and 5.2% (3 of 58) were female. Of the 10 unhelmeted passengers, 30.0% (3 of 10) were male and 70.0% (7 of 10) were female.

| Motorcyclist Fatalities (2009)<br>Person Type, Sex & Helmet Use |        |            |            |        |       |
|---|--------|------------|------------|--------|-------|
| Person Type   | Sex    | Helmet Use |            |        | Total |
|   |        | Unknown    | Not In Use | Helmet |       |
| Operator  | Female |            | 3          | 1      | 4     |
|   | Male   | 7          | 55         | 27     | 89    |
|   | Total  | 7          | 58         | 28     | 93    |
| Passenger   | Female | 1          | 7          |        | 8     |
|   | Male   | 1          | 3          |        | 4     |
|   | Total  | 2          | 10         |        | 12    |
| Total   | Female | 1          | 10         | 1      | 12    |
|   | Male   | 8          | 58         | 27     | 93    |
|   | Total  | 9          | 68         | 28     | 105   |

### Fatalities Age & Sex

Of the motorcycle operators killed, 26.7% were age 26-35, 19.0% were age 46-55 and 17.1% were age 36-45. Some 95.7% (89 of 93) of the operators killed were male.

| Motorcyclist Fatalities in 2009 Crashes<br>Motorcyclists |            |            |           |            |               |
|--|------------|------------|-----------|------------|---------------|
| Person Type  | Person Age | Person Sex |           |            | Total         |
|  |            | Female     | Male      | Total      |               |
| Operators  | 16 - 25    | 1          | 13        | 14         | 13.3%         |
|  | 26 - 35    |            | 28        | 28         | 26.7%         |
|  | 36 - 45    | 3          | 15        | 18         | 17.1%         |
|  | 46 - 55    |            | 20        | 20         | 19.0%         |
|  | 56 - 65    |            | 12        | 12         | 11.4%         |
|  | 66 - 75    |            | 1         | 1          | 1.0%          |
|  | Total      | 4          | 89        | 93         | 88.6%         |
| Passengers   | 16 - 25    | 1          | 1         | 2          | 1.9%          |
|  | 26 - 35    | 3          | 1         | 4          | 3.8%          |
|  | 36 - 45    | 2          | 2         | 4          | 3.8%          |
|  | 46 - 55    | 1          |           | 1          | 1.0%          |
|  | 76+        | 1          |           | 1          | 1.0%          |
|  | Total      | 8          | 4         | 12         | 11.4%         |
| Operators & Passengers                                   | 16 - 25    | 2          | 14        | 16         | 15.2%         |
|  | 26 - 35    | 3          | 29        | 32         | 30.5%         |
|  | 36 - 45    | 5          | 17        | 22         | 21.0%         |
|  | 46 - 55    | 1          | 20        | 21         | 20.0%         |
|  | 56 - 65    |            | 12        | 12         | 11.4%         |
|  | 66 - 75    |            | 1         | 1          | 1.0%          |
|  | 76+        | 1          |           | 1          | 1.0%          |
| <b>Total</b>   |            | <b>12</b>  | <b>93</b> | <b>105</b> | <b>100.0%</b> |

12.8% of motorcycle operators in 2009 crashes had an alcohol-related driver condition.

### Operator Age & Sex

Of the motorcycle operators involved in crashes, 23.3% were age 46-55, 21.1% were age 26-35 and 20.3% were age 16-25. Some 94.3% (1,377 of 1,461) of the operators were male.

| Motorcycle Operators in 2009 Crashes<br>Operator Age & Sex |              |           |             |             |               |
|--|--------------|-----------|-------------|-------------|---------------|
| Operator Age   | Operator Sex |           |             | Total       |               |
|  | Unknown      | Female    | Male        |             |               |
| Unknown  | 6            |           | 3           | 9           | .6%           |
| Under 16   |              |           | 14          | 14          | 1.0%          |
| 16 - 25  |              | 11        | 285         | 296         | 20.3%         |
| 26 - 35  |              | 17        | 291         | 308         | 21.1%         |
| 36 - 45  |              | 18        | 268         | 286         | 19.6%         |
| 46 - 55  |              | 23        | 317         | 340         | 23.3%         |
| 56 - 65  |              | 9         | 178         | 187         | 12.8%         |
| 66 - 75  |              |           | 16          | 16          | 1.1%          |
| 76+  |              |           | 5           | 5           | .3%           |
| <b>Total</b>   | <b>6</b>     | <b>78</b> | <b>1377</b> | <b>1461</b> | <b>100.0%</b> |

### Operator Condition

Some 12.8% (186 of 1,455) of the motorcycle operators involved in crashes had an alcohol-related driver condition. Of those with an alcohol-related driver condition, 98.9% (184 of 186) were male. Of the operators with an alcohol-related driver condition, 30.1% were age 46-55, 27.4% were age 26-35 and 20.4% were age 36-45.

| Motorcycle Operators in 2009 Crashes<br>Operator Age & Sex<br>Alcohol-Related Driver Condition |                     |             |             |                 |          |            |            |               |           |             |             |               |
|--|---------------------|-------------|-------------|-----------------|----------|------------|------------|---------------|-----------|-------------|-------------|---------------|
| Operator Age   | Not Alcohol-Related |             |             | Alcohol-Related |          |            | Total      |               |           |             |             |               |
|  | Female              | Male        | Total       | Female          | Male     | Total      | Female     | Male          | Total     |             |             |               |
| Not Stated   |                     | 2           | 2           | .2%             |          | 1          | 1          | .5%           |           | 3           | 3           | .2%           |
| Under 16   |                     | 14          | 14          | 1.1%            |          |            |            |               |           | 14          | 14          | 1.0%          |
| 16 - 25  | 11                  | 257         | 268         | 21.1%           |          | 28         | 28         | 15.1%         | 11        | 285         | 296         | 20.3%         |
| 26 - 35  | 17                  | 240         | 257         | 20.3%           |          | 51         | 51         | 27.4%         | 17        | 291         | 308         | 21.2%         |
| 36 - 45  | 18                  | 230         | 248         | 19.5%           |          | 38         | 38         | 20.4%         | 18        | 268         | 286         | 19.7%         |
| 46 - 55  | 21                  | 263         | 284         | 22.4%           | 2        | 54         | 56         | 30.1%         | 23        | 317         | 340         | 23.4%         |
| 56 - 65  | 9                   | 167         | 176         | 13.9%           |          | 11         | 11         | 5.9%          | 9         | 178         | 187         | 12.9%         |
| 66 - 75  |                     | 15          | 15          | 1.2%            |          | 1          | 1          | .5%           |           | 16          | 16          | 1.1%          |
| 76+  |                     | 5           | 5           | .4%             |          |            |            |               |           | 5           | 5           | .3%           |
| <b>Total</b>   | <b>76</b>           | <b>1193</b> | <b>1269</b> | <b>100.0%</b>   | <b>2</b> | <b>184</b> | <b>186</b> | <b>100.0%</b> | <b>78</b> | <b>1377</b> | <b>1455</b> | <b>100.0%</b> |

Excludes 6 operators with unknown sex & age.

### Motorcycle Operator Contributing Factor

Some 24.0% of motorcycle operators in 2009 crashes were driving at an Unsafe Speed, 6.8% made an Improper Act/ Movement and 4.5% were Inattentive.

| Motorcycle Operators in Crashes (2009)<br>Operator Contributing Factor<br>Sorted by Number of Operators |             |               |
|---|-------------|---------------|
| Contributing Factor   | Operators   | % of Total    |
| No Improper Action by Driver  | 679         | 46.5%         |
| Unsafe Speed  | 350         | 24.0%         |
| Other Improper Act/Movement   | 100         | 6.8%          |
| Inattention   | 66          | 4.5%          |
| Followed Too Closely  | 63          | 4.3%          |
| DUI-Alcohol   | 63          | 4.3%          |
| Failed To Yield   | 38          | 2.6%          |
| Unsafe Vehicle  | 27          | 1.8%          |
| Failed To Stop  | 15          | 1.0%          |
| Improper Overtaking   | 13          | .9%           |
| Improper Turn   | 13          | .9%           |
| Changed Lanes Unsafely  | 11          | .8%           |
| Left of Center  | 11          | .8%           |
| Wrong Way   | 4           | .3%           |
| Improper Start  | 3           | .2%           |
| Stopped in Traffic Lane   | 2           | .1%           |
| DUI-Drugs   | 2           | .1%           |
| Improper Parking  | 1           | .1%           |
| <b>Total</b>  | <b>1461</b> | <b>100.0%</b> |

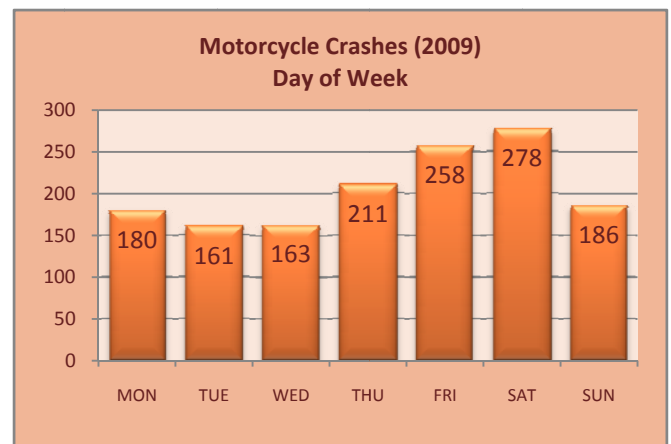
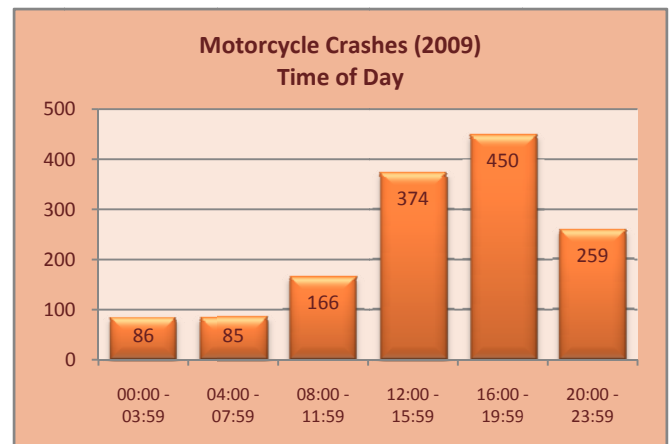
A closer look at the primary contributing factor of Unsafe Speed by motorcycle operators shows that 36.9% were driving at an unsafe speed on a curve/turn, 19.1% were exceeding the legal speed limit and 15.4% were driving at an unsafe speed for traffic conditions.

| Motorcycle Operators in Crashes (2009)<br>Unsafe Speed Contributing Factor<br>Sorted by Number of Operators |            |               |
|---|------------|---------------|
| Unsafe Speed  | Operators  | % of Total    |
| Unsafe Speed - On Curve/Turn  | 129        | 36.9%         |
| Unsafe Speed - Exceeding Legal Limit  | 67         | 19.1%         |
| Unsafe Speed - For Traffic Conditions   | 54         | 15.4%         |
| Unsafe Speed - Other  | 39         | 11.1%         |
| Unsafe Speed - Inexperienced Driver (Young)   | 22         | 6.3%          |
| Unsafe Speed - Rain or Wet Roadway  | 16         | 4.6%          |
| Unsafe Speed - For Type of Roadway  | 11         | 3.1%          |
| Unsafe Speed - Driver's Ability (Age)   | 4          | 1.1%          |
| Unsafe Speed - Wind   | 3          | .9%           |
| Unsafe Speed - Other Weather Conditions   | 2          | .6%           |
| Unsafe Speed - Vehicle Condition  | 2          | .6%           |
| Unsafe Speed - View Obstruction   | 1          | .3%           |
| <b>Total</b>  | <b>350</b> | <b>100.0%</b> |

### Time & Day

In 2009 there were 1,437 total motorcycle crashes. Some 31.3% of these crashes occurred between the hours of 4 p.m. (16:00) and 7:59 p.m. (19:59), followed by 26.0% between 12:00 Noon (12:00) and 3:39 p.m. (15:59).

Saturday had the highest occurrence of these crashes in 2009 with 19.3% of the total crashes, followed by Friday with 18.0% of the total crashes.



### Number of Vehicles Involved

Some 46.1% of the motorcycle crashes involved only the motorcycle, 50.8% involved the motorcycle and one other vehicle and 3.1% involved the motorcycle and two or more vehicles.

Some 57.8% of the fatal motorcycle crashes involved only the motorcycle, 37.3% involved the motorcycle and another vehicle and 4.9% involved the motorcycle and two or more vehicles.

| Motorcyclists in 2009 Crashes<br>By County & Person Injury Severity |                        |                |                    |          |      |         |       |
|---|------------------------|----------------|--------------------|----------|------|---------|-------|
| County  | Person Injury Severity |                |                    |          |      |         | Total |
|   | Fatal                  | Incapacitating | Non-incapacitating | Possible | None | Unknown |       |
| Adair   |                        |                | 3                  | 1        | 1    |         | 5     |
| Atoka   |                        | 1              |                    |          | 1    |         | 2     |
| Beckham   |                        | 2              | 2                  | 1        | 2    |         | 7     |
| Bryan   | 1                      | 6              | 5                  | 6        | 6    |         | 24    |
| Caddo   | 1                      | 2              | 3                  |          | 2    |         | 8     |
| Canadian  |                        | 9              | 9                  | 8        | 5    |         | 31    |
| Carter  | 1                      | 5              | 13                 | 1        | 4    | 2       | 26    |
| Cherokee  | 1                      | 9              | 8                  | 3        | 3    | 0       | 24    |
| Choctaw   | 2                      | 2              |                    |          | 2    |         | 6     |
| Cimarron  |                        | 1              |                    |          |      |         | 1     |
| Cleveland   | 3                      | 31             | 37                 | 15       | 16   | 4       | 106   |
| Comanche  | 3                      | 17             | 30                 | 9        | 12   | 1       | 72    |
| Cotton  | 1                      |                | 3                  | 2        | 1    |         | 7     |
| Craig   | 1                      |                |                    |          | 2    |         | 3     |
| Creek   | 1                      | 3              | 5                  | 4        | 3    |         | 16    |
| Custer  |                        | 2              | 6                  | 1        | 2    |         | 11    |
| Delaware  | 2                      | 17             | 16                 | 5        | 2    |         | 42    |
| Dewey   |                        | 1              | 2                  | 1        |      |         | 4     |
| Garfield  | 3                      | 8              | 9                  | 7        | 6    |         | 33    |
| Garvin  |                        | 7              | 2                  | 2        | 2    |         | 13    |
| Grady   |                        | 3              | 4                  | 3        | 4    |         | 14    |
| Grant   |                        | 2              |                    |          | 1    |         | 3     |
| Greer   |                        |                | 1                  |          |      |         | 1     |
| Harper  | 1                      |                |                    |          |      |         | 1     |
| Haskell   | 1                      | 3              |                    | 2        |      |         | 6     |
| Hughes  |                        | 1              | 1                  |          |      |         | 2     |
| Jackson   | 1                      | 6              | 4                  | 1        | 5    |         | 17    |
| Jefferson   |                        | 2              |                    |          |      |         | 2     |
| Johnston  |                        | 1              | 1                  | 1        |      |         | 3     |
| Kay   | 5                      | 3              | 9                  |          | 2    |         | 19    |
| Kingfisher  |                        | 1              | 6                  |          | 2    |         | 9     |
| Kiowa   |                        | 1              | 5                  |          | 1    |         | 7     |
| Latimer   | 1                      | 2              | 1                  |          |      |         | 4     |
| LeFlore   | 4                      | 21             | 11                 | 4        | 6    | 1       | 47    |
| Lincoln   | 1                      | 5              | 6                  |          | 1    |         | 13    |
| Logan   | 1                      |                | 2                  | 3        | 3    |         | 9     |
| Love  |                        |                |                    |          | 1    |         | 1     |
| McClain   |                        | 5              | 3                  |          | 3    |         | 11    |
| McCurtain   | 1                      | 5              | 3                  | 1        | 2    |         | 12    |

| Motorcyclists in 2009 Crashes<br>By County & Person Injury Severity |                        |                |                    |          |      |         |       |
|---|------------------------|----------------|--------------------|----------|------|---------|-------|
| County  | Person Injury Severity |                |                    |          |      |         | Total |
|   | Fatal                  | Incapacitating | Non-incapacitating | Possible | None | Unknown |       |
| McIntosh  | 1                      | 1              |                    | 5        | 2    |         | 9     |
| Major   |                        |                | 3                  |          |      |         | 3     |
| Marshall  |                        | 2              | 1                  | 1        | 3    |         | 7     |
| Mayes   | 2                      | 8              | 12                 | 7        | 3    |         | 32    |
| Murray  |                        | 3              | 4                  |          | 1    |         | 8     |
| Muskogee  | 4                      | 8              | 10                 | 7        | 3    | 1       | 33    |
| Noble   |                        |                | 1                  |          |      |         | 1     |
| Okfuskee  |                        |                | 3                  |          |      |         | 3     |
| Oklahoma  | 19                     | 60             | 129                | 58       | 59   | 10      | 335   |
| Okmulgee  | 1                      | 1              | 6                  | 1        | 1    |         | 10    |
| Osage   | 3                      | 6              | 6                  | 6        |      |         | 21    |
| Ottawa  | 2                      | 5              | 4                  | 5        | 1    |         | 17    |
| Pawnee  | 1                      | 1              | 2                  |          | 1    |         | 5     |
| Payne   | 2                      | 17             | 17                 | 10       | 4    |         | 50    |
| Pittsburg   | 2                      | 4              | 3                  | 3        | 2    |         | 14    |
| Pontotoc  | 2                      | 3              | 4                  | 3        |      |         | 12    |
| Pottawatomie  | 1                      | 7              | 8                  | 6        | 1    | 1       | 24    |
| Pushmataha  |                        | 1              | 4                  |          |      |         | 5     |
| Roger Mills   |                        |                | 1                  |          |      |         | 1     |
| Rogers  | 1                      | 5              | 21                 | 1        | 2    |         | 30    |
| Seminole  | 2                      |                | 7                  | 1        |      |         | 10    |
| Sequoyah  | 1                      | 5              | 4                  | 7        | 3    |         | 20    |
| Stephens  | 2                      | 9              | 6                  | 2        | 1    |         | 20    |
| Texas   |                        | 1              | 2                  | 1        |      |         | 4     |
| Tillman   |                        |                | 1                  |          | 1    |         | 2     |
| Tulsa   | 18                     | 62             | 121                | 45       | 40   | 3       | 289   |
| Wagoner   | 2                      | 6              | 5                  | 4        | 4    |         | 21    |
| Washington  | 1                      | 3              | 9                  | 2        | 2    |         | 17    |
| Washita   |                        |                | 1                  |          |      |         | 1     |
| Woods   |                        |                | 1                  |          |      |         | 1     |
| Woodward  | 2                      | 1              | 2                  | 2        | 2    |         | 9     |
| Total   | 105                    | 403            | 608                | 258      | 239  | 23      | 1636  |

| Motorcyclists in 2009 Crashes<br>By City/Town & Person Injury Severity |                        |                |                    |          |      |         |       |
|--|------------------------|----------------|--------------------|----------|------|---------|-------|
| City/Town  | Person Injury Severity |                |                    |          |      |         | Total |
|  | Fatal                  | Incapacitating | Non-incapacitating | Possible | None | Unknown |       |
| Ada  |                        | 2              |                    | 2        |      |         | 4     |
| Altus  |                        | 1              | 4                  | 1        | 4    |         | 10    |
| Anadarko   |                        | 1              |                    |          |      |         | 1     |
| Antlers  |                        |                | 1                  |          |      |         | 1     |
| Arcadia  |                        |                | 1                  |          |      |         | 1     |
| Ardmore  |                        | 1              | 7                  | 1        | 2    |         | 11    |
| Atoka  |                        |                |                    |          | 1    |         | 1     |
| Bartlesville   | 1                      | 2              | 6                  | 1        | 1    |         | 11    |
| Bethany  |                        | 3              | 3                  | 3        | 2    |         | 11    |
| Big Cabin  |                        |                |                    |          | 1    |         | 1     |
| Bixby  |                        | 2              | 2                  | 1        | 1    |         | 6     |
| Blanchard  |                        |                | 1                  |          | 1    |         | 2     |
| Broken Arrow   |                        | 4              | 13                 | 4        | 6    |         | 27    |
| Carrier  |                        |                |                    | 1        |      |         | 1     |
| Chandler   |                        | 1              | 1                  |          |      |         | 2     |
| Checotah   |                        | 1              |                    | 1        |      |         | 2     |
| Chickasha  |                        |                | 2                  | 1        | 3    |         | 6     |
| Choctaw  |                        |                | 1                  | 1        | 1    |         | 3     |
| Claremore  |                        | 1              | 5                  |          | 2    |         | 8     |
| Clinton  |                        |                |                    |          | 1    |         | 1     |
| Colbert  |                        |                |                    | 1        |      |         | 1     |
| Collinsville   | 1                      |                | 4                  | 2        |      |         | 7     |
| Comanche   |                        |                | 1                  |          |      |         | 1     |
| Coweta   | 1                      |                |                    | 2        | 2    |         | 5     |
| Cushing  |                        |                | 2                  |          | 1    |         | 3     |
| Custer City  |                        |                |                    |          | 1    |         | 1     |
| Del City   |                        | 2              | 7                  | 2        | 2    |         | 13    |
| Dewey  |                        |                |                    | 1        |      |         | 1     |
| Dover  |                        |                | 1                  |          |      |         | 1     |
| Drumright  |                        |                |                    | 1        |      |         | 1     |
| Duncan   | 2                      | 7              | 5                  | 1        | 1    |         | 16    |
| Durant   |                        | 2              | 4                  | 3        | 5    |         | 14    |
| Edmond   |                        | 3              | 10                 | 1        | 8    | 1       | 23    |
| El Reno  |                        |                | 1                  |          |      |         | 1     |
| Elk City   |                        | 1              |                    | 1        | 2    |         | 4     |
| Enid   | 2                      | 7              | 9                  | 6        | 5    |         | 29    |
| Erick  |                        |                | 1                  |          |      |         | 1     |

| Motorcyclists in 2009 Crashes<br>By City/Town & Person Injury Severity |                        |                |                    |          |      |         |       |
|--|------------------------|----------------|--------------------|----------|------|---------|-------|
| City/Town  | Person Injury Severity |                |                    |          |      |         | Total |
|  | Fatal                  | Incapacitating | Non-incapacitating | Possible | None | Unknown |       |
| Eufaula  | 1                      |                |                    |          |      |         | 1     |
| Fairview   |                        |                | 1                  |          |      |         | 1     |
| Fort Gibson  |                        | 1              | 1                  |          |      |         | 2     |
| Fort Towson  | 1                      |                |                    |          |      |         | 1     |
| Geary  |                        |                |                    | 1        |      |         | 1     |
| Glenpool   | 1                      | 1              |                    |          | 1    |         | 3     |
| Grandfield   |                        |                |                    |          | 1    |         | 1     |
| Grove  |                        | 4              | 3                  |          | 1    |         | 8     |
| Guthrie  |                        |                |                    | 1        | 2    |         | 3     |
| Guymon   |                        | 1              | 1                  |          |      |         | 2     |
| Harrah   |                        | 1              | 3                  | 1        | 1    |         | 6     |
| Heavener   |                        |                | 1                  |          |      |         | 1     |
| Hinton   |                        | 1              | 1                  |          |      |         | 2     |
| Hugo   |                        | 1              |                    |          |      |         | 1     |
| Idabel   |                        | 1              |                    |          |      |         | 1     |
| Jay  |                        | 1              |                    |          |      |         | 1     |
| Jenks  |                        | 1              | 1                  |          |      |         | 2     |
| Kingfisher   |                        |                | 2                  |          | 1    |         | 3     |
| Kingston   |                        |                |                    |          | 1    |         | 1     |
| Lawton   | 2                      | 10             | 23                 | 8        | 10   | 1       | 54    |
| Loco   |                        |                |                    | 1        |      |         | 1     |
| Locust Grove   |                        |                | 1                  |          | 2    |         | 3     |
| Lone Grove   |                        | 1              |                    |          |      | 1       | 2     |
| Luther   |                        | 1              | 1                  |          |      |         | 2     |
| McAlester  | 1                      | 4              | 1                  | 2        | 1    |         | 9     |
| Medicine Park  |                        | 1              | 1                  | 1        | 1    |         | 4     |
| Miami  |                        | 2              | 3                  | 2        | 1    |         | 8     |
| Midwest City   | 1                      | 5              | 6                  | 6        | 3    | 1       | 22    |
| Minco  |                        |                | 1                  |          |      |         | 1     |
| Moore  | 1                      | 4              | 11                 | 5        | 4    | 1       | 26    |
| Muldrow  |                        |                |                    |          | 1    |         | 1     |
| Muskogee   | 1                      | 6              | 7                  | 6        | 3    | 1       | 24    |
| Mustang  |                        | 3              | 3                  | 1        | 1    |         | 8     |
| Newcastle  |                        | 3              |                    |          | 1    |         | 4     |
| Nichols Hills  |                        |                |                    | 1        |      |         | 1     |
| Noble  |                        |                |                    | 1        | 1    |         | 2     |
| Norman   | 2                      | 16             | 16                 | 3        | 6    | 3       | 46    |
| Okarche  |                        | 1              |                    |          |      |         | 1     |



| Motorcyclists in 2009 Crashes<br>By City/Town & Person Injury Severity |                        |                |                    |          |      |         |       |
|--|------------------------|----------------|--------------------|----------|------|---------|-------|
| City/Town  | Person Injury Severity |                |                    |          |      |         | Total |
|  | Fatal                  | Incapacitating | Non-incapacitating | Possible | None | Unknown |       |
| Oklahoma City  | 18                     | 55             | 107                | 46       | 48   | 8       | 282   |
| Okmulgee   |                        |                | 1                  |          |      |         | 1     |
| Oologah  |                        |                | 1                  |          |      |         | 1     |
| Pauls Valley   |                        | 2              | 1                  |          | 1    |         | 4     |
| Perkins  |                        | 1              |                    |          |      |         | 1     |
| Perry  |                        |                | 1                  |          |      |         | 1     |
| Piedmont   |                        |                | 1                  | 1        | 1    |         | 3     |
| Pocola   |                        |                | 2                  |          | 1    | 1       | 4     |
| Ponca City   | 1                      | 3              | 4                  |          | 2    |         | 10    |
| Poteau   |                        |                | 2                  | 2        | 3    |         | 7     |
| Pryor  |                        | 1              | 1                  | 2        | 1    |         | 5     |
| Purcell  |                        |                |                    |          | 1    |         | 1     |
| Sallisaw   | 1                      | 1              | 1                  | 3        |      |         | 6     |
| Sand Springs   |                        | 2              | 2                  |          | 1    |         | 5     |
| Sapulpa  |                        | 1              | 1                  |          | 3    |         | 5     |
| Shawnee  |                        | 4              | 5                  | 4        | 1    | 1       | 15    |
| Skiatook   |                        |                | 5                  | 1        |      |         | 6     |
| Slaughterville   |                        | 2              |                    |          |      |         | 2     |
| Spavinaw   |                        | 2              | 1                  |          |      |         | 3     |
| Stillwater   |                        | 6              | 10                 | 6        | 2    |         | 24    |
| Sulphur  |                        |                | 1                  |          | 1    |         | 2     |
| Tecumseh   |                        |                |                    | 1        |      |         | 1     |
| The Village  |                        |                | 2                  |          |      |         | 2     |
| Tishomingo   |                        |                |                    | 1        |      |         | 1     |
| Tulsa  | 15                     | 50             | 89                 | 36       | 31   | 3       | 224   |
| Union City   |                        |                | 1                  |          |      |         | 1     |
| Vinita   |                        |                |                    |          | 1    |         | 1     |
| W. Siloam Springs  |                        |                |                    | 1        |      |         | 1     |
| Wagoner  |                        | 1              | 1                  |          |      |         | 2     |
| Walters  |                        |                | 2                  |          |      |         | 2     |
| Warr Acres   |                        | 1              |                    |          |      |         | 1     |
| Wayne  |                        |                | 2                  |          |      |         | 2     |
| Weatherford  |                        |                | 3                  |          |      |         | 3     |
| Webbers Falls  | 1                      |                |                    |          |      |         | 1     |
| Woodward   | 1                      | 1              | 2                  |          | 2    |         | 6     |
| Yukon  |                        | 1              |                    | 5        | 1    |         | 7     |
| Total  | 55                     | 245            | 429                | 187      | 197  | 22      | 1,135 |