

# Fatalities in Crashes (2016)

Oklahoma  
Department of Public Safety  
Highway Safety Office

3223 N. Lincoln Blvd.  
Oklahoma City, OK 73105

Phone: 405.523.1570  
Fax: 405.523.1586

[www.ohso.ok.gov](http://www.ohso.ok.gov)

687 people lost their lives in crashes on Oklahoma roads in 2016.

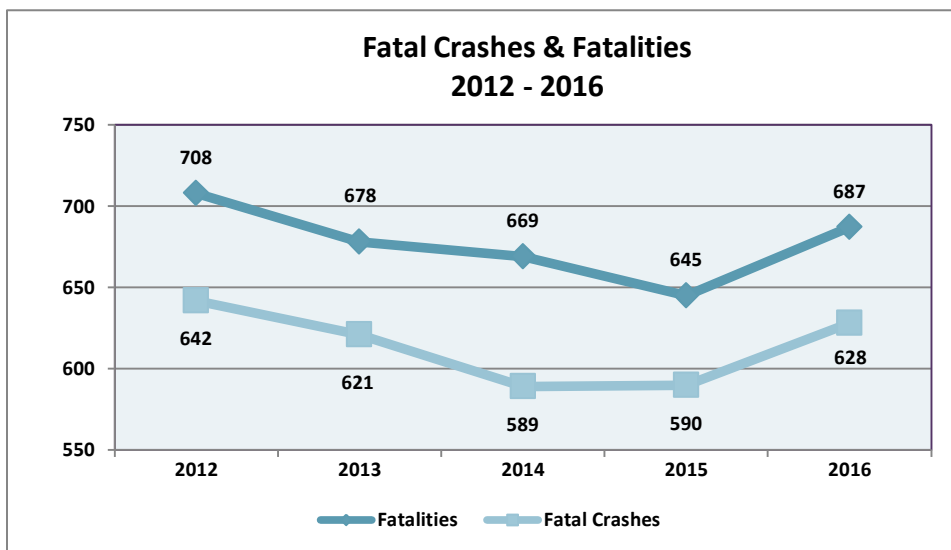
The number of fatalities in Oklahoma increased 6.5% from 2015 to 2016.

## Crashes, Fatalities & Injuries

In 2016, there were 687 fatalities in 628 fatal crashes in Oklahoma. Fatal crashes increased 6.4% from 590 in 2015, and fatalities increased 6.5% from 645 in 2015. Persons injured in fatal crashes decreased 15.1% from 538 in 2015 to 457 in 2016.\*

## Fatalities

Of the 687 fatalities in 2016 crashes, 464 were drivers, 127 were passengers, 91 were pedestrians and five were bicyclists.



## Fatality Age & Sex

In 2016, 11.9% of the fatalities in crashes were age 21-25, 9.6% were age 31-35 and 9.2% were age 26-30.

The number of male fatalities in 2016 crashes was highest among 21-25 year-olds with 57, followed by 31-35 year-olds with 45 fatalities.

The number of female fatalities in 2016 crashes was highest among the 21-25 age group with 25 fatalities, followed by age groups 26-30 and 31-35 with 21 fatalities in each group.

**Fatalities in 2016 Crashes  
By Age & Sex**

Age	Person Sex				% of Total
	Unknown	Female	Male	Total	
1 - 5		8	6	14	2.0%
6 - 10		1	6	7	1.0%
11 - 15		5	11	16	2.3%
16 - 20		20	31	51	7.4%
21 - 25		25	57	82	11.9%
26 - 30	1	21	41	63	9.2%
31 - 35		21	45	66	9.6%
36 - 40		17	37	54	7.9%
41 - 45		16	36	52	7.6%
46 - 50		12	32	44	6.4%
51 - 55		14	34	48	7.0%
56 - 60		9	38	47	6.8%
61 - 65		10	37	47	6.8%
66 - 70		8	19	27	3.9%
71 - 75	1	9	19	29	4.2%
76 - 80		10	10	20	2.9%
81 - 85		5	7	12	1.7%
86 +		2	6	8	1.2%
<b>Total</b>	<b>2</b>	<b>213</b>	<b>472</b>	<b>687</b>	<b>100.0%</b>

\*Injuries include incapacitating, non-incapacitating, and possible injuries.

Restraint Use Among Fatalities

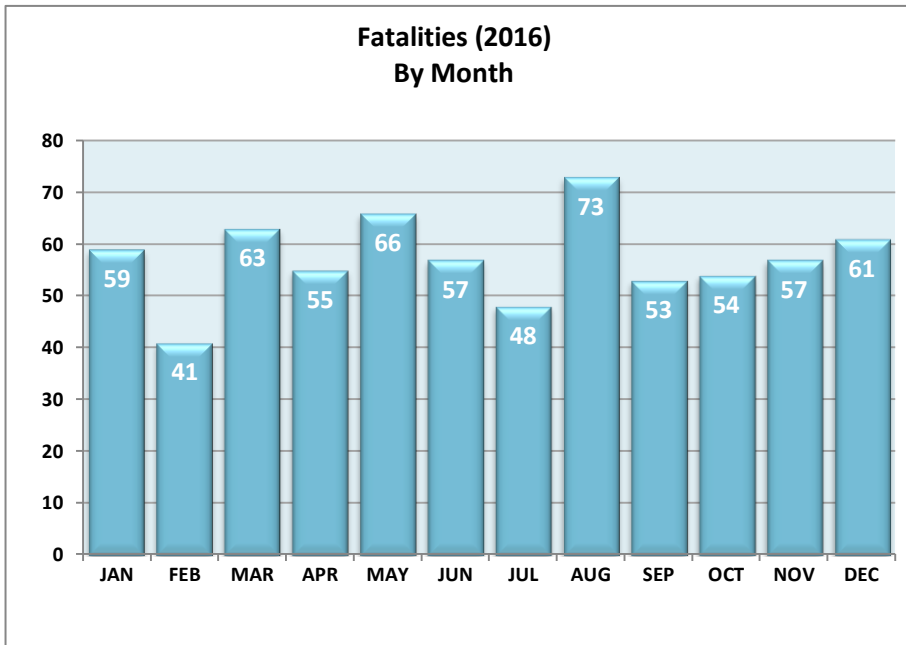
Of the 324 driver fatalities with known restraint use in passenger vehicle/pickup trucks, 50.6% were unrestrained.

Of the 106 passenger fatalities with known restraint use in passenger vehicle/pickup trucks, 56.6% were unrestrained.

Overall, including both drivers and passengers, 52.1% of fatalities with known restraint use in passenger vehicles/pickup trucks were unrestrained.

*Fatalities in Crashes (2016)  
In Passenger Vehicles/Pickup Trucks  
Known Restraint Use & Person Type*

Restraint Use	Person Type		
	Driver	Passenger	Total
Not In Use	164	60	224
In Use	160	46	206
<b>Total</b>	<b>324</b>	<b>106</b>	<b>430</b>



Fatalities by Month

In 2016, August had the highest number of fatalities with 73, followed by May with 66, and March with 63.

Occupant Seating Position

Of the 224 unrestrained occupant fatalities in passenger vehicles/pickup trucks, 164 (73.2%) were drivers.

Thirty-nine (17.4%) of the unrestrained fatalities were in the right front seat of the passenger vehicle or pickup truck.

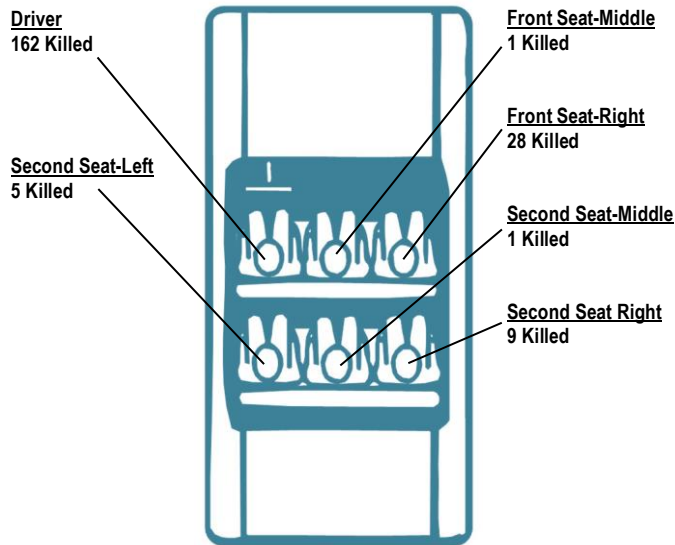
*Unrestrained Occupant Fatalities in Crashes (2016)  
in Passenger Vehicles/Pickup Trucks  
By Seating Position and Vehicle Type*

Seating Position	Vehicle Type		Total
	Passenger Vehicle	Pickup Truck	
Front Seat - Left Side (Driver's Side)	92	72	164
Front Seat - Right Side	24	15	39
Front Seat - Unknown	1		1
Second Seat - Left Side	7	1	8
Second Seat - Middle	1	2	3
Second Seat - Right Side	2	2	4
Third Seat - Left Side	1		1
Third Seat - Right Side	1		1
Other passenger in enclosed cargo area	1		1
Other passenger in unenclosed cargo area		1	1
Unknown		1	1
<b>Total</b>	<b>130</b>	<b>94</b>	<b>224</b>

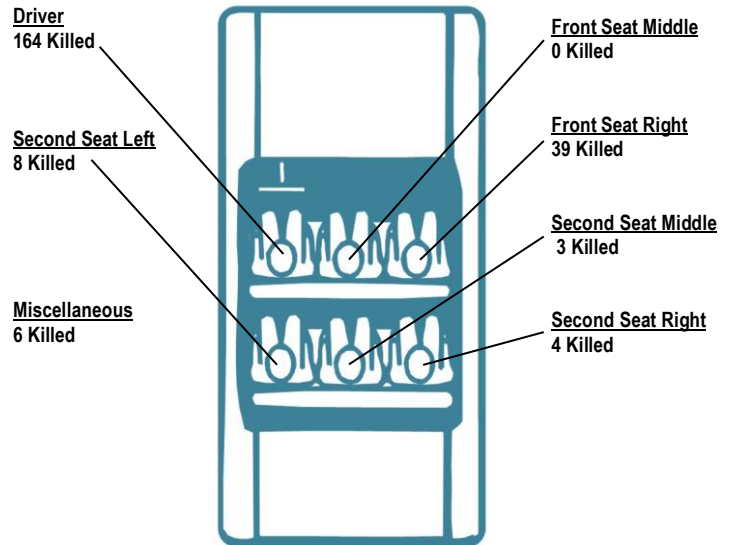
## Occupants Killed (2016) By Seating Position and Restraint Use

### *Passenger Vehicles and Pickup Trucks*

#### With Restraints



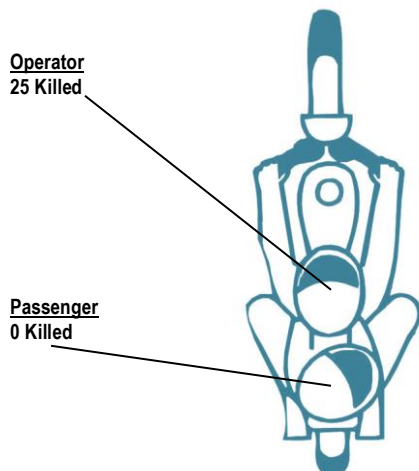
#### Without Restraints



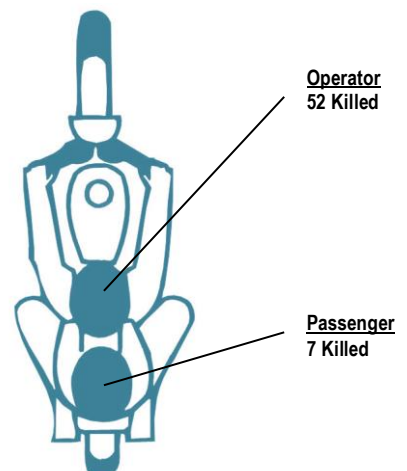
These numbers include only those occupants for whom safety equipment use was reported on the collision report form. Miscellaneous includes positions such as third row seats in cars and vans, passengers in enclosed and unenclosed cargo areas, and unknown seating positions.

### *Motorcyclists*

#### With Helmet



#### Without Helmet



These numbers include only those motorcyclists whose helmet use was reported on the collision report form.

Driver/Operator Fatalities (2016) By Driver Age & Vehicle Type											
Driver/Operator Age	Passenger Vehicle	Pickup Truck	Single Unit Truck	Truck/Trailer	Truck-tractor/Trailer(s)	Motorcycle	ATV/Scooter/Moped	Other	Unknown/Not Stated	Total	Percentage of Total Driver Fatalities
Unknown											
Under 16	3							1		4	0.9%
16 - 20	17	7				7	1		1	33	7.1%
21 - 25	31	12	1		2	9				55	11.9%
26 - 30	20	10			1	7				38	8.2%
31 - 35	25	8				8	1	1		43	9.3%
36 - 40	18	7	1	1	2	7				36	7.8%
41 - 45	17	12			4	6				39	8.4%
46 - 50	16	8		1	2	6				33	7.1%
51 - 55	13	10			3	9				35	7.5%
56 - 60	16	13			2	6	1			38	8.2%
61 - 65	16	11	1			11			1	40	8.6%
66 - 70	11	6			1	4				22	4.7%
71 - 75	16	8								24	5.2%
76 - 80	6	5				1				12	2.6%
81 - 85	4	2								6	1.3%
86 - 90	1	2								3	0.6%
91 - 95	2	1								3	0.6%
96+											
<b>Total</b>	<b>232</b>	<b>122</b>	<b>3</b>	<b>2</b>	<b>17</b>	<b>81</b>	<b>3</b>	<b>2</b>	<b>2</b>	<b>464</b>	<b>100.0%</b>

Passenger Fatalities (2016) By Person Age & Vehicle Type							
Driver/Operator Age	Passenger Vehicle	Pickup Truck	Truck-tractor/Trailer(s)	Motorcycle	ATV	Total	Percentage of Total Passenger Fatalities
Unknown							
1 - 5	11	1				12	9.4%
6 - 10	5	1				6	4.7%
11 - 15	3	3			1	7	5.5%
16 - 20	14	2				16	12.6%
21 - 25	8	12				20	15.7%
26 - 30	10	1				11	8.7%
31 - 35	10	2		1		13	10.2%
36 - 40	6	2	1	1		10	7.9%
41 - 45	3			1		4	3.1%
46 - 50	1	1		1		3	2.4%
51 - 55	1			1		2	1.6%
56 - 60				1		1	0.8%
61 - 65	1					1	0.8%
66 - 70	3			1		4	3.1%
71 - 75	1	2				3	2.4%
76 - 80	6	1				7	5.5%
81 - 85	3	2				5	3.9%
86 +	2					2	1.6%
<b>Total</b>	<b>88</b>	<b>30</b>	<b>1</b>	<b>7</b>	<b>1</b>	<b>127</b>	<b>100.0%</b>

Fatality Comparison by County 2015 - 2016							
County	2015	2016	% +/-	County	2015	2016	% +/-
Adair	3	2	-33.3%	LeFlore	14	18	28.6%
Alfalfa	3	2	-33.3%	Lincoln	9	11	22.2%
Atoka	3	5	66.7%	Logan	7	7	0.0%
Beaver	5	2	-60.0%	Love	3	5	66.7%
Beckham	9	8	-11.1%	McClain	7	16	128.6%
Blaine	1	2	100.0%	McCurtain	8	14	75.0%
Bryan	11	20	81.8%	McIntosh	5	7	40.0%
Caddo	7	7	0.0%	Major	7	5	-28.6%
Canadian	12	17	41.7%	Marshall	4	4	0.0%
Carter	11	10	-9.1%	Mayes	7	21	200.0%
Cherokee	7	10	42.9%	Murray	4	4	0.0%
Choctaw	5	8	60.0%	Muskogee	13	5	-61.5%
Cimarron	2	1	-50.0%	Noble	2	4	100.0%
Cleveland	28	14	-50.0%	Nowata	6	1	-83.3%
Coal		1	---	Okfuskee	1	4	300.0%
Comanche	12	15	25.0%	Oklahoma	85	88	3.5%
Cotton	4	3	-25.0%	Okmulgee	7	13	85.7%
Craig		6	---	Osage	8	8	0.0%
Creek	14	14	0.0%	Ottawa	11	7	-36.4%
Custer	6	5	-16.7%	Pawnee	3	6	100.0%
Delaware	7	10	42.9%	Payne	15	10	-33.3%
Dewey	3	5	66.7%	Pittsburg	13	7	-46.2%
Ellis	1	1	0.0%	Pontotoc	8	14	75.0%
Garfield	4	10	150.0%	Pottawatomie	20	21	5.0%
Garvin	5	13	160.0%	Pushmataha	5	1	-80.0%
Grady	17	16	-5.9%	Roger Mills		3	---
Grant	3	5	66.7%	Rogers	22	16	-27.3%
Greer	1	5	400.0%	Seminole	5	10	100.0%
Harmon	1		-100.0%	Sequoyah	8	2	-75.0%
Harper	3	6	100.0%	Stephens	6	8	33.3%
Haskell	2	2	0.0%	Texas	8	3	-62.5%
Hughes	2	2	0.0%	Tillman		1	---
Jackson	3	4	33.3%	Tulsa	72	68	-5.6%
Jefferson	1		-100.0%	Wagoner	7	9	28.6%
Johnston	2	3	50.0%	Washington	6	7	16.7%
Kay	15	6	-60.0%	Washita	5	1	-80.0%
Kingfisher	6	6	0.0%	Woods	2	2	0.0%
Kiowa	5		-100.0%	Woodward	4	7	75.0%
Latimer	4	3	-25.0%	Total	645	687	6.5%