

Fatal Crashes (2016)

Oklahoma
Department of Public Safety
Highway Safety Office

3223 N. Lincoln Blvd.
Oklahoma City, OK 73105

Phone: 405.523.1570
Fax: 405.523.1586

www.ohso.ok.gov

Crashes, Fatalities & Injuries

In 2016, there were 628 fatal crashes in Oklahoma. Fatal crashes increased 6.4% from the 590 fatal crashes in 2015. Fatal crashes in 2016 resulted in 687 fatalities and 457 persons injured. Fatalities increased 6.5% from 645 in 2015 to 687 in 2016.

Fatalities

Of the 687 fatalities in 2016 crashes, 464 were drivers, 127 were passengers, 91 were pedestrians and five were bicyclists.

First Harmful Event

The first harmful event in a crash is defined as the first damage-producing event for the crash.

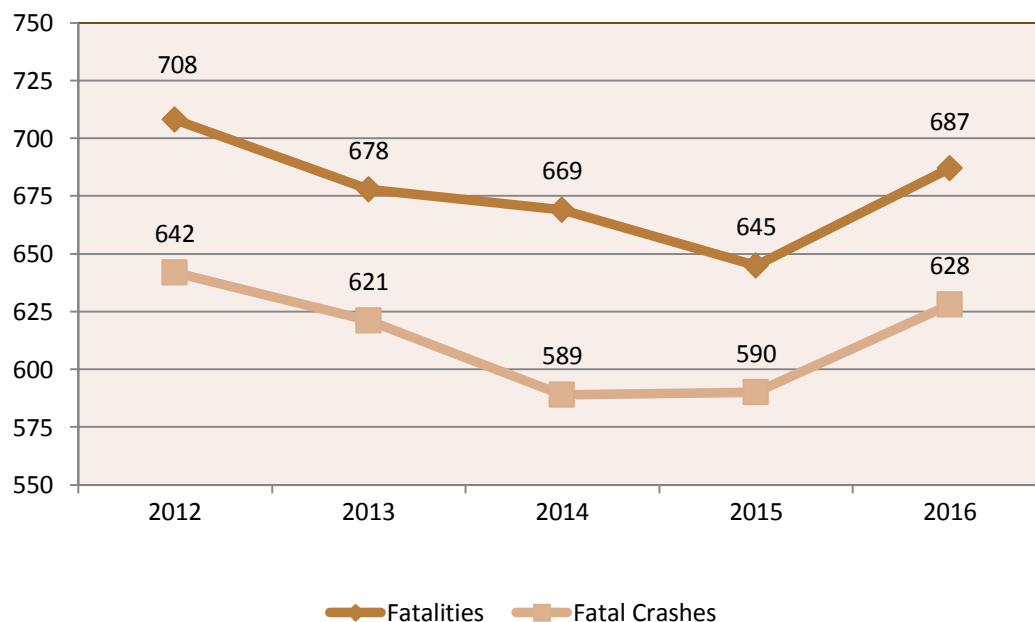
The first harmful event in 58.3% of fatal crashes in 2016 involved a collision with a person, motor vehicle or another non-fixed object. Of these crashes, 73.4% involved a collision with another vehicle and 22.6% involved a collision with a pedestrian.

Another 26.8% of fatal crashes involved a collision with a fixed object. Of these crashes, 25.0% involved a collision with a tree, 15.5% involved collision with a ditch or embankment, and 6.5% involved collision with a guardrail/guardrail face.

The first harmful event in 17.8% of fatal crashes was a non-collision, which includes rollovers (52.7%), roadway departures (24.1%) and crossing the center median or center line (10.7%).

A total of 628 fatal crashes on Oklahoma roads in 2016 took the lives of 687 people.

Fatal Crashes & Fatalities 2012 - 2016



Time, Day & Month

In 2016, 33.4% of fatal crashes occurred between the hours of 3 p.m. (15:00) and 8:59 p.m. (20:59). Saturday and Sunday had the highest number of fatal crashes with 214 (34.1%). August had the most fatal crashes in 2016 with 64 (10.2%), followed by December with 59 (9.4%).

Number of Vehicles Involved

In 2016, 55.3% of fatal crashes involved only one vehicle, 37.4% involved two vehicles and 7.3% involved three or more vehicles.

Highway Class

In 2016, 17.8% of fatal crashes occurred on city streets, 16.2% on rural state highways, and 15.6% on county roads.

Rural vs. Urban

Some 62.7% of the 2016 fatal crashes occurred in rural areas.

Alcohol-Related

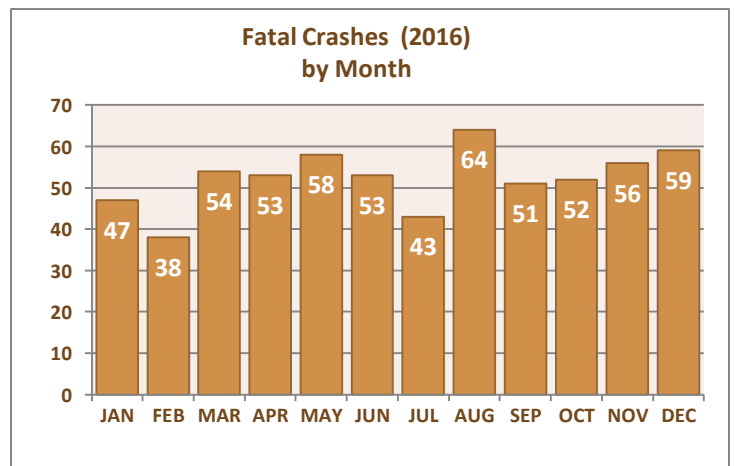
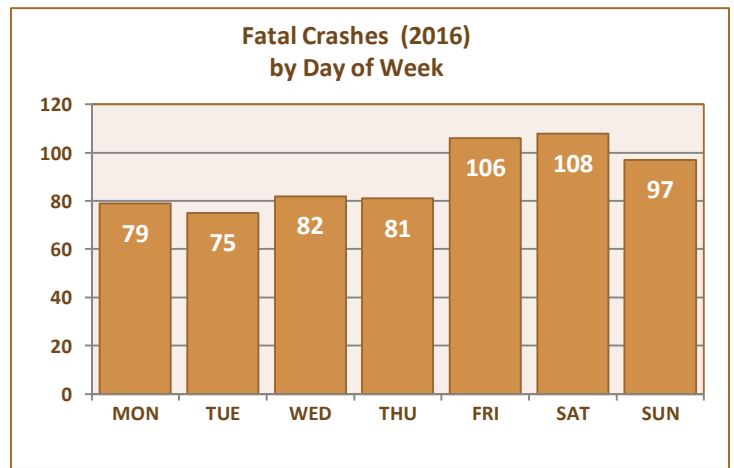
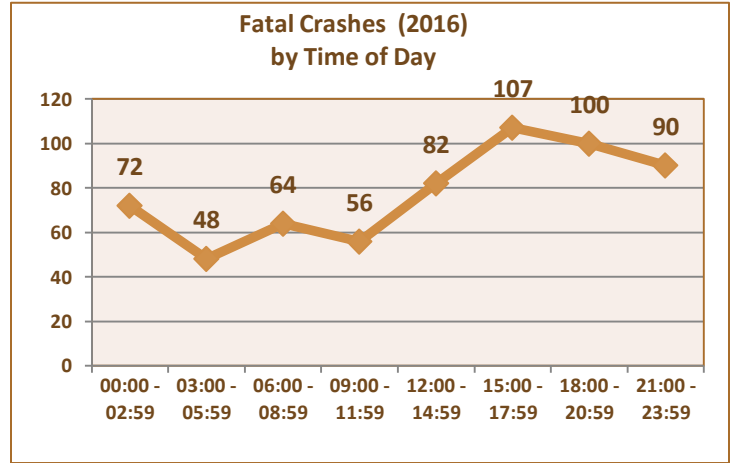
A crash is considered to be alcohol-related if at least one driver in the crash has an alcohol-related driver condition. In 2016, 27.5% of fatal crashes were alcohol-related.

Contributing Factors

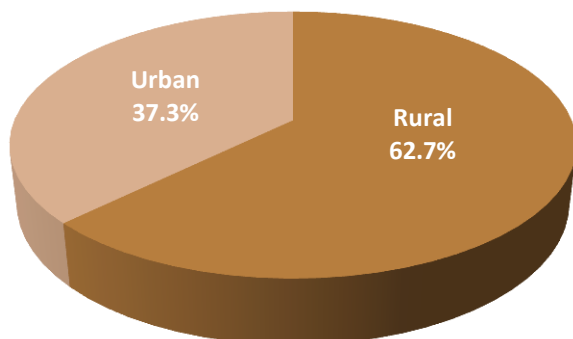
In 2016, 17.5% of the drivers in fatal crashes were driving at an unsafe speed. Of these, 33.3% were exceeding the legal limit, 26.8% were driving at an unsafe speed on a curve/turn, 8.3% were driving at an unsafe speed for the type of roadway, and another 8.3% were driving at an unsafe speed in rain or on a wet roadway.

Some 9.5% of the drivers in fatal crashes involved an impaired driver according to the collision report.*

Another 6.9% of the drivers in fatal crashes involved a driver that field to yield.



Fatal Crashes (2016)
Rural vs. Urban



* Impaired drivers include those with DUI-Alcohol and DUI-Drugs.

2016 Fatal Crashes County & Crash Injury Severity											
County	OHP	Police	Total	County	OHP	Police	Total	County	OHP	Police	Total
Adair	2		2	Grant	5		5	Nowata	1		1
Alfalfa	2		2	Greer	3	1	4	Okfuskee	3		3
Atoka	1	4	5	Harmon			0	Oklahoma	24	62	86
Beaver	2		2	Harper	4		4	Okmulgee	11	1	12
Beckham	6	2	8	Haskell	2		2	Osage	8		8
Blaine	1		1	Hughes	2		2	Ottawa	4	2	6
Bryan	11	9	20	Jackson	2		2	Pawnee	6		6
Caddo	7		7	Jefferson			0	Payne	8	2	10
Canadian	8	7	15	Johnston	3		3	Pittsburg	6	1	7
Carter	8	2	10	Kay	4	1	5	Pontotoc	11	1	12
Cherokee	7	1	8	Kingfisher	6		6	Pottawatomie	16	3	19
Choctaw	6	1	7	Kiowa			0	Pushmataha	1		1
Cimarron		1	1	Latimer	2		2	Roger Mills	3		3
Cleveland		11	11	LeFlore	11	4	15	Rogers	13	3	16
Coal	1		1	Lincoln	8	2	10	Seminole	9	1	10
Comanche	4	10	14	Logan	5		5	Sequoyah	1	1	2
Cotton	3		3	Love	4		4	Stephens	4	1	5
Craig	5		5	McClain	12	1	13	Texas	3		3
Creek	10	4	14	McCurtain	12	1	13	Tillman	1		1
Custer	4	1	5	McIntosh	6		6	Tulsa	20	44	64
Delaware	7	2	9	Major	5		5	Wagoner	8	1	9
Dewey	4		4	Marshall	4		4	Washington	5	2	7
Ellis	1		1	Mayes	13	3	16	Washita		1	1
Garfield	5	4	9	Murray	4		4	Woods	2		2
Garvin	10	2	12	Muskogee	3	2	5	Woodward	3	2	5
Grady	12	2	14	Noble	3	1	4	Total	421	207	628