

## Teen Drivers Age 16-19 in Crashes (2016)

Oklahoma  
Department of Public Safety  
Highway Safety Office

3223 N. Lincoln Blvd.  
Oklahoma City, OK 73105

Phone: 405.523.1570

Fax: 405.523.1586

[www.ohso.ok.gov](http://www.ohso.ok.gov)



- In 2016, 13,910 drivers age 16-19 were involved in motor vehicle crashes – a 1.7% increase from the 13,683 drivers in 2015.
- In 2016, 56 drivers age 16-19 were involved in fatal motor vehicle crashes – a 25.3% decrease from the 75 drivers in 2015.
- In 2016, 1,855 drivers age 16-19 were involved in serious injury motor vehicle crashes – a 2.8% decrease from the 1,909 drivers in 2015.
- In 2015, 23 drivers age 16-19 were killed in motor vehicle crashes – a 34.3% decrease over the 35 teen drivers killed in 2015.
- From 2011-2014, 43.5% of drivers age 16-19 involved in fatal crashes were killed. The year 2015 was above this percentage, with 46.7% of drivers in this age group killed. However, in 2016, that percentage dropped, with 41.1% of teen drivers involved in fatal crashes killed.
- In 2016, 1,005 drivers age 16-19 were seriously injured in motor vehicle crashes – a 0.3% increase from the 1,002 teen drivers seriously injured in 2015.
- In 2016, there were over twice as many male as female teen drivers involved in fatal injury crashes.
- In 2016, from age 16-19, as driver age increased, involvement in crashes also increased.

Drivers Age 16-19 in Crashes Five Year Trend					
	2012	2013	2014	2015	2016
Drivers Age 16-19 in Crashes	13,614	12,849	12,611	13,683	13,910
Drivers Age 16-19 in Fatal Crashes	61	68	62	75	56
Driver Fatalities Age 16-19	31	25	29	35	23
Percentage of Drivers Age 16-19 Killed in Fatal Crashes	50.1%	36.8%	46.8%	46.7%	41.1%
Total Fatalities in Crashes Involving a Driver Age 16-19	63	71	69	84	64

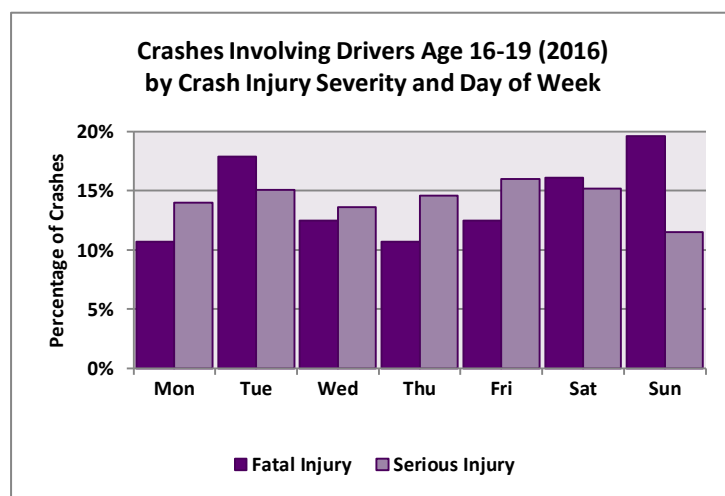
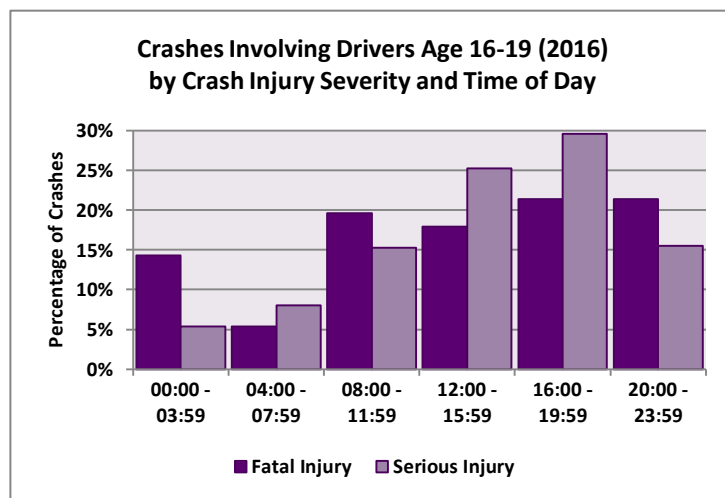
- In 2016, 82.6% (19 of 23) of driver fatalities age 16-19 were occupants of passenger vehicles/pickups.
  - 52.6% (10 of 19) of drivers were unrestrained.
  - 68.4% (13 of 19) of drivers were male.
  - Seven drivers of passenger vehicles/pickup trucks were age 16, three drivers were age 17, five were age 18 and four were 19.
  
- In 2016, 2.9% (54 of 1,911) of drivers age 16-19 involved in fatal or serious injury motor vehicle crashes had an alcohol-related driver condition.
  
- In 2016, 8.7% (2 of 23) of drivers age 16-19 killed in motor vehicle crashes had an alcohol-related driver condition.
  
- In 2016, 17.5% of drivers age 16-19 involved in fatal and serious injury motor vehicle crashes were driving at an unsafe speed, 15.3% failed to yield and 12.2% were inattentive.
  
- In 2016, 58.8% of drivers age 16-19 involved in fatal and serious injury motor vehicle crashes were the only occupant in the vehicle, 26.6% had one additional occupant and 14.6% had two or more additional occupants.

Time & Day of Week

Drivers age 16-19 were involved in fatal crashes more often between 4:00 p.m. (16:00) and 11:59 p.m. (23:59).

Drivers age 16-19 were involved in serious injury crashes more often between 4:00 p.m. (16:00) and 7:59 p.m. (19:59).

Fatal injury crashes involving a driver age 16-19 occurred more often on Sunday than any other day of the week, while serious injury crashes occurred more often on Friday.



Driver Age & Sex

All Crashes

In 2016, a total of 13,910 drivers age 16-19 were involved in crashes. As shown in the table to the right, as driver age increased, involvement in crashes increased, but is highest for 18-year-olds. This is true of both male and female teen drivers.

In 2016, 51.1% of drivers age 16-19 involved in all crashes were male.

Drivers Age 16-19 in Crashes (2016) By Driver Age & Driver Sex					
Driver Age	Driver Sex				Total Drivers
	Female		Male		
	Number	% of Total Drivers	Number	% of Total Drivers	
16	1285	9.2%	1212	8.7%	2497
17	1728	12.4%	1712	12.3%	3440
18	1932	13.9%	2128	15.3%	4060
19	1851	13.3%	2059	14.8%	3910
<b>Total</b>	<b>6796</b>	<b>48.9%</b>	<b>7111</b>	<b>51.1%</b>	<b>13907</b>

Excludes three drivers with unknown sex

Serious Injury Crashes

In 2016, a total of 1,855 drivers age 16-19 were involved in serious injury crashes. As shown in the table to the right, as driver age increased from age 16 to age 18, involvement in crashes increased, with 18-year-olds having the highest involvement. As with the previous table crashes, at age 19, there was a decline in the number of teen drivers involved in serious injury crashes.

In 2016, 52.0% of drivers age 16-19 involved in serious injury crashes were male.

Drivers Age 16-19 in Serious Injury Crashes (2016) By Driver Age & Driver Sex					
Driver Age	Driver Sex				Total Drivers
	Female		Male		
	Number	% of Total Drivers	Number	% of Total Drivers	
16	174	9.4%	159	8.6%	333
17	236	12.7%	240	12.9%	476
18	258	13.9%	291	15.7%	549
19	223	12.0%	274	14.8%	497
<b>Total</b>	<b>891</b>	<b>48.0%</b>	<b>964</b>	<b>52.0%</b>	<b>1855</b>

Fatal Injury Crashes

In 2016, a total of 56 drivers age 16-19 were involved in fatal injury crashes. As shown in the table to the right, male teen drivers were over two times more likely to be involved in fatal injury crashes than female teen drivers.

In 2016, 67.9% of drivers age 16-19 involved in fatal crashes were male.

Drivers Age 16-19 in Fatal Injury Crashes (2016) By Driver Age & Driver Sex					
Driver Age	Driver Sex				Total Drivers
	Female		Male		
	Number	% of Total Drivers	Number	% of Total Drivers	
16	3	5.4%	11	19.6%	14
17	3	5.4%	11	19.6%	14
18	7	12.5%	10	17.9%	17
19	5	8.9%	6	10.7%	11
<b>Total</b>	<b>18</b>	<b>32.1%</b>	<b>38</b>	<b>67.9%</b>	<b>56</b>