

Fatal Crashes (2015)

Oklahoma
Department of Public Safety
Highway Safety Office

3223 N. Lincoln Blvd.
Oklahoma City, OK 73105

Phone: 405.523.1570
Fax: 405.523.1586

www.ohso.ok.gov

Crashes, Fatalities & Injuries

In 2015, there were 590 fatal crashes in Oklahoma. Fatal crashes increased less than one percent from the 589 fatal crashes in 2014. Fatal crashes in 2015 resulted in 645 fatalities and 538 persons injured. Fatalities decreased 3.6% from 669 in 2014 to 645 in 2015.

Fatalities

Of the 645 fatalities in 2015 crashes, 439 were drivers, 132 were passengers, 68 were pedestrians and six were bicyclists.

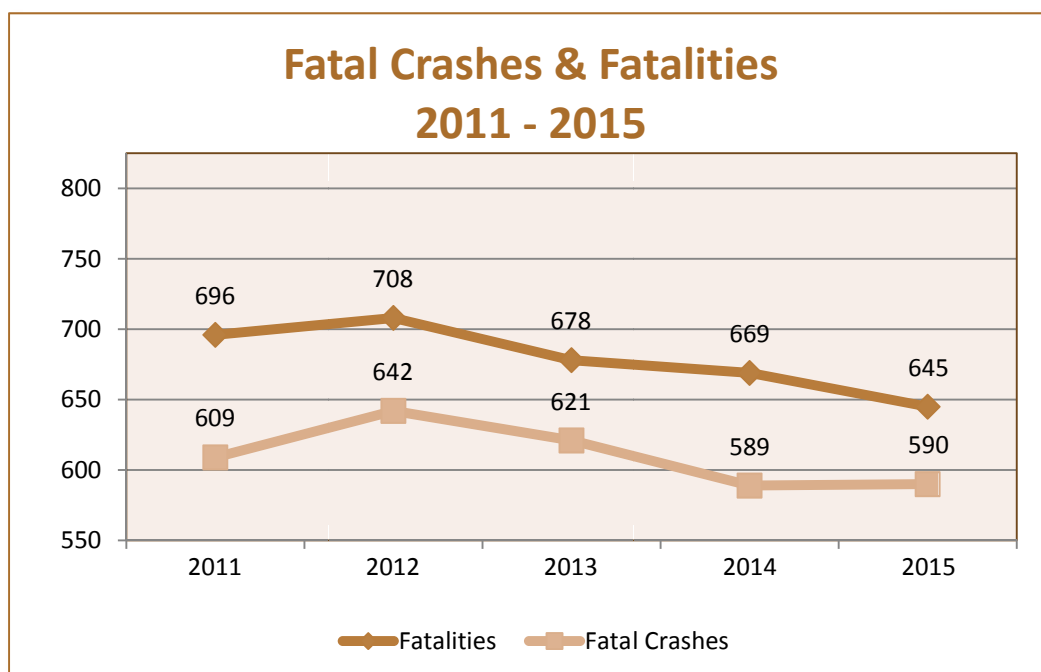
First Harmful Event

The first harmful event in a crash is defined as the first damage-producing event for the crash.

The first harmful event in 54.4% of fatal crashes in 2015 involved a collision with a person, motor vehicle or other non-fixed object. Of these crashes, 73.8% involved a collision with another vehicle and 18.7% involved a collision with a pedestrian.

Another 21.7% of fatal crashes involved a collision with a fixed object. Of these crashes, 20.3% involved a collision with a tree, 10.9% involved a collision with a ditch and 8.3% involved a collision with a curb.

The first harmful event in 22.0% of fatal crashes was a non-collision, which includes rollovers (60.8%), roadway departures (23.0%) and crossing the center median or center line (10.2%).



Time, Day & Month

In 2015, 33.2% of fatal crashes occurred between the hours of 3 p.m. (15:00) and 8:59 p.m. (20:59). Saturday and Sunday had the highest number of fatal crashes with 196 (33.2%). June had the most fatal crashes in 2015 with 66 (13.0%), followed by July with 63 (10.7%).

Number of Vehicles Involved

In 2015, 54.1% of fatal crashes involved only one vehicle, 40.0% involved two vehicles and 5.9% involved three or more vehicles.

Highway Class

In 2015, 18.8% of fatal crashes occurred on city streets, 16.1% on county roads and 14.9% on county roads.

Rural vs. Urban

Some 65.1% of the 2015 fatal crashes occurred in rural areas.

Alcohol-Related

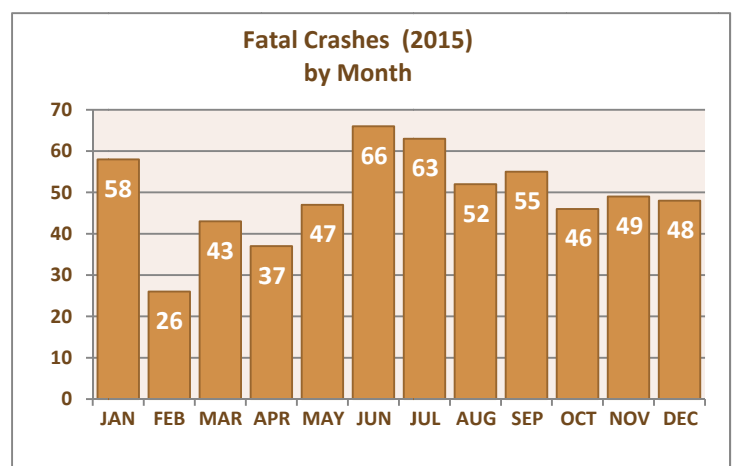
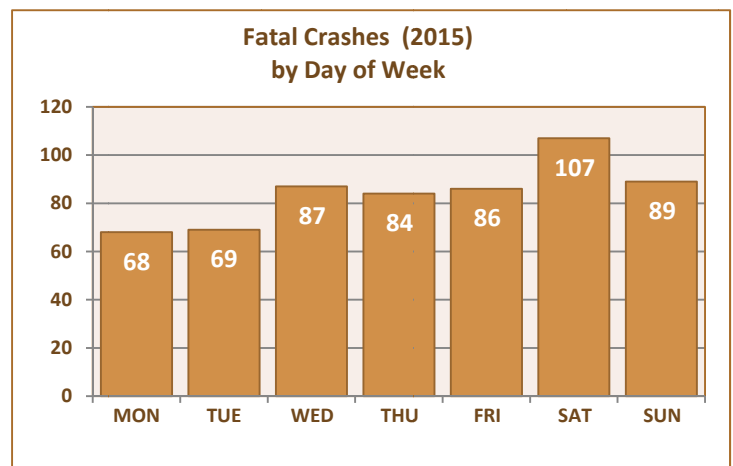
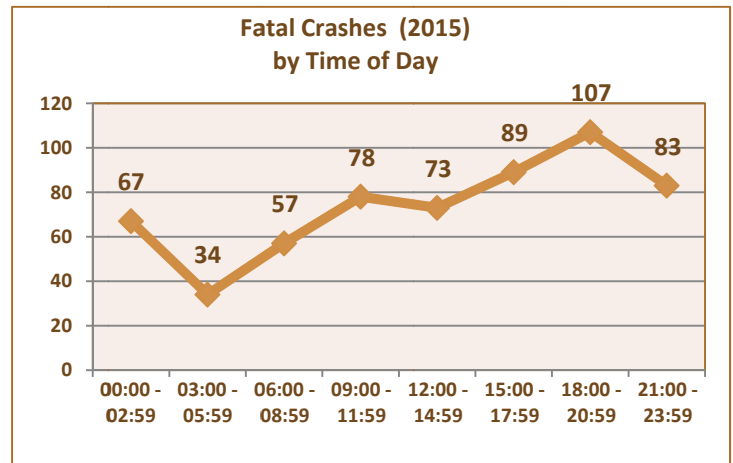
A crash is considered to be alcohol-related if at least one driver in the crash has an alcohol-related driver condition. In 2015, 27.3% of fatal crashes were alcohol-related.

Contributing Factors

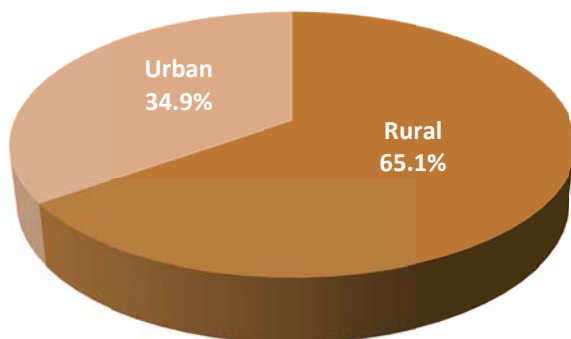
In 2015, 16.2% of the drivers in fatal crashes were driving at an unsafe speed. Of these, 36.5% were exceeding the legal limit, 21.6% were driving at an unsafe speed on a curve/turn and 7.4% were driving at an unsafe speed for the type of roadway.

Some 7.6% of the drivers in fatal crashes involved an impaired driver according to the collision report.

Another 6.7% of the drivers in fatal crashes involved a driver that field to yield.



Fatal Crashes (2015)
Rural vs. Urban



2015 Fatal Crashes County & Crash Injury Severity											
County	OHP	Police	Total	County	OHP	Police	Total	County	OHP	Police	Total
Adair	3		3	Grant	3		3	Nowata	5		5
Alfalfa	2		2	Greer	1		1	Okfuskee	1		1
Atoka	2		2	Harmon	1		1	Oklahoma	25	57	82
Beaver	4		4	Harper	3		3	Okmulgee	3	3	6
Beckham	7	1	8	Haskell	2		2	Osage	7	1	8
Blaine	1		1	Hughes	2		2	Ottawa	6	3	9
Bryan	5	5	10	Jackson	3		3	Pawnee	3		3
Caddo	6		6	Jefferson	1		1	Payne	11	1	12
Canadian	5	6	11	Johnston	2		2	Pittsburg	10	1	11
Carter	6	1	7	Kay	10	4	14	Pontotoc	8		8
Cherokee	5	1	6	Kingfisher	5	1	6	Pottawatomie	15	5	20
Choctaw	4	1	5	Kiowa	4		4	Pushmataha	4	1	5
Cimarron	2		2	Latimer	3	1	4	Roger Mills			0
Cleveland	6	20	26	LeFlore	9	2	11	Rogers	17	3	20
Coal			0	Lincoln	7		7	Seminole	4	1	5
Comanche	5	7	12	Logan	5	2	7	Sequoyah	7	1	8
Cotton	3		3	Love	3		3	Stephens	4		4
Craig			0	McClain	5	1	6	Texas	8		8
Creek	7	5	12	McCurtain	7	1	8	Tillman			0
Custer	5	1	6	McIntosh	4		4	Tulsa	16	51	67
Delaware	5	1	6	Major	6	1	7	Wagoner	4	3	7
Dewey	3		3	Marshall	3	1	4	Washington	4		4
Ellis	1		1	Mayes	6		6	Washita	5		5
Garfield	1	3	4	Murray	4		4	Woods	2		2
Garvin	5		5	Muskogee	10	1	11	Woodward	3	1	4
Grady	15		15	Noble	2		2	Total	391	199	590