

Fatalities in Crashes (2011)

Oklahoma
Department of Public Safety
Highway Safety Office

3223 N. Lincoln Blvd.
Oklahoma City, OK 73105

Phone: 405.523.1570
Fax: 405.523.1586

www.ohso.ok.gov

Crashes, Fatalities & Injuries

In 2011, there were 696 fatalities in 609 fatal crashes in Oklahoma. Fatal crashes decreased 1.1% from 616 in 2010 to 609 in 2011 while fatalities increased 4.2% from 668 in 2010 to 696 in 2011.

Fatalities

Of the 696 fatalities in 2011 crashes, 479 were drivers, 168 were passengers, one was an occupant in a parked vehicle, 47 were pedestrians, and one was a bicyclist.

Fatality Age & Sex

Some 10.5% of the fatalities in 2011 crashes were age 21-25, 10.2% were age 26-30 and 9.9% were age 16-20.

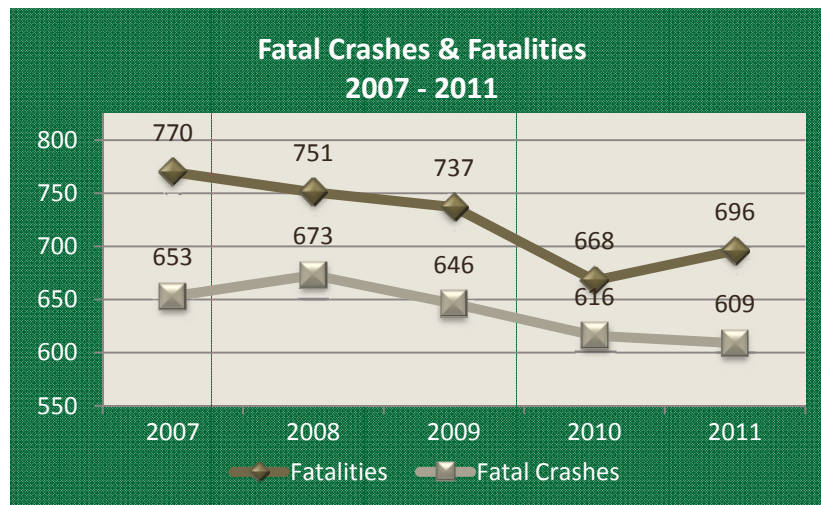
In 2011, 68.7% of the 696 fatalities were male, while 48.7% of the licensed drivers in Oklahoma were male and 49.5% of the total population was male.

The number of male fatalities in 2011 crashes was highest among males age 21-25 with 53, followed by age 26-30 with 52 fatalities and age 16-20 with 48 fatalities.

The number of female fatalities in 2011 crashes was highest among the 41-45 age group with 23, followed by age 16-20 with 21 fatalities and age 21-25 with 20 fatalities.

Fatalities in 2011 Crashes By Age & Sex				
Age	Person Sex			% of Total
	Female	Male	Total	
Unknown	1	1	2	0.3%
Under 16	18	18	36	5.2%
16 - 20	21	48	69	9.9%
21 - 25	20	53	73	10.5%
26 - 30	19	52	71	10.2%
31 - 35	12	38	50	7.2%
36 - 40	15	36	51	7.3%
41 - 45	23	32	55	7.9%
46 - 50	14	42	56	8.0%
51 - 55	12	43	55	7.9%
56 - 60	7	31	38	5.5%
61 - 65	12	18	30	4.3%
66 - 70	13	21	34	4.9%
71 - 75	11	7	18	2.6%
76 - 80	8	17	25	3.6%
81 - 85	4	9	13	1.9%
86 - 90	7	6	13	1.9%
91 - 95	1	6	7	1.0%
96+				
Total	218	478	696	100.0%

- ▶ Fatalities increased 4.2% from 668 in 2010 to 696 in 2011.
- ▶ 58.2% of the fatalities with known restraint use in passenger vehicle/pickup trucks were unrestrained.



Restraint Use Among Fatalities

Of the 346 driver fatalities with known restraint use in passenger vehicle/pickup trucks, 57.5% were unrestrained.

Of the 144 passenger fatalities with known restraint use in passenger vehicle/pickup trucks, 59.7% were unrestrained.

Overall, including both drivers and passengers, 58.2% of the fatalities with known restraint use in passenger vehicle/pickup trucks were unrestrained.

Fatalities in Crashes (2011) In Passenger Vehicles/Pickup Trucks Known Restraint Use & Person Type			
Restraint Use	Person Type		
	Driver	Passenger	Total
Not In Use	199	86	285
In Use	147	51	198
Child Restraint		7	7
Total	346	144	490

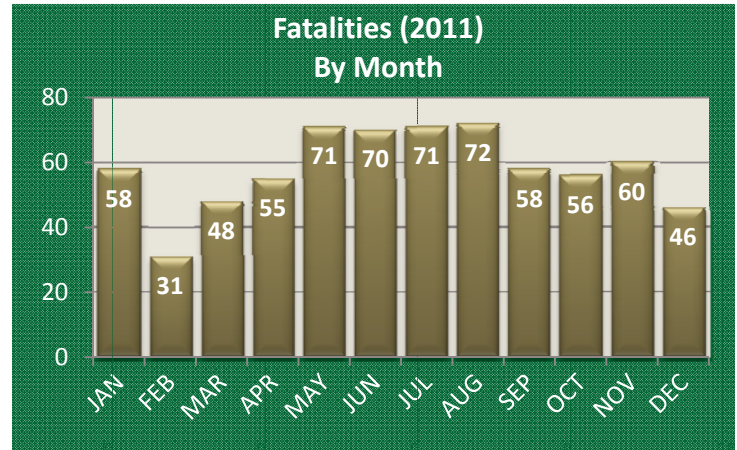
Fatalities by Month

In 2011, May through August had the highest number of fatalities with at least 70 fatalities each month.

Passenger Seating Position

Of the 86 unrestrained passenger fatalities in passenger vehicles/pickup trucks, 51 (59.3%) were in the front right seat position.

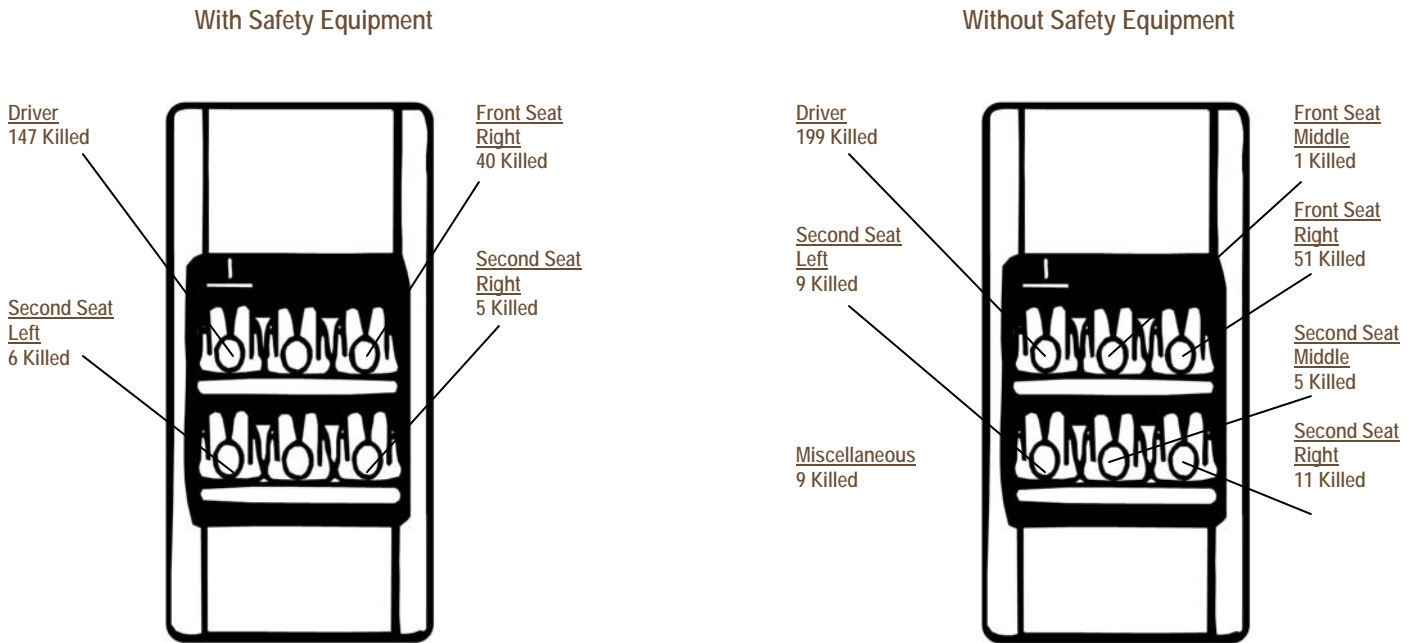
Twenty-six (30.2%) of the unrestrained fatalities were in the second row of seats in the passenger vehicle or pickup truck.



Unrestrained Passenger Fatalities in Crashes (2011) in Passenger Vehicles/Pickup Trucks By Seating Position and Vehicle Type			
Seating Position	Vehicle Type		Total
	Passenger Vehicle	Pickup Truck	
Front Seat Middle		1	1
Front Seat Right	32	19	51
Front Row - Other		1	1
Second Row Seat Left	9		9
Second Row Seat Middle	5		5
Second Row Seat Right	10	1	11
Second Row - Other	1		1
Third Row Seat Right	1		1
Enclosed passenger or cargo area	1		1
Vehicle Exterior		2	2
Unknown	3		3
Total	62	24	86

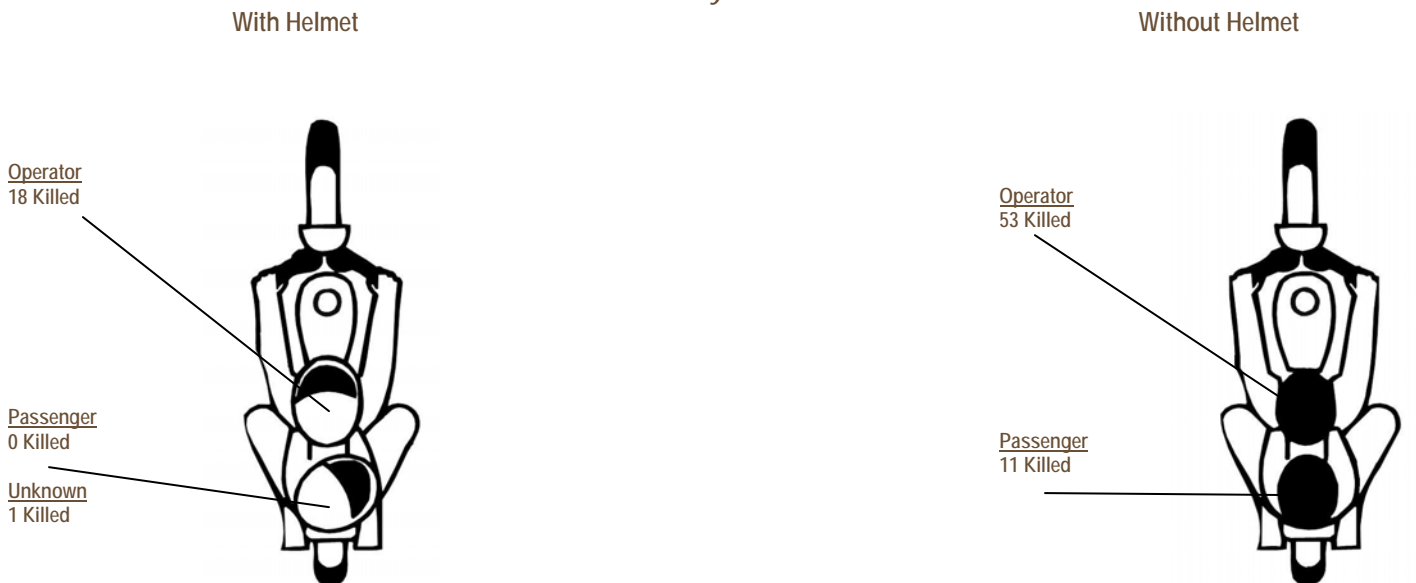
Occupants Killed (2011) By Seating Position and Safety Equipment Use

Passenger Vehicles and Pickup Trucks



These numbers count only those occupants for whom safety equipment use and seat location were reported on the collision report form. Miscellaneous seat position includes positions such as third row seats in cars and vans.

Motorcyclists



These numbers include only those motorcyclists whose helmet use was reported on the collision report form.

Driver/Operator Fatalities (2011) By Driver Age & Vehicle Type											
Driver/Operator Age	Passenger Vehicle	Pickup Truck	Single Unit Truck	Truck-tractor/ Trailer(s)	Motorcycle	ATV	Motor Scooter/ Moped	Other	Unknown	Total	% of Total Driver Fatalities
Unknown											
Under 16					1					1	0.2%
16 - 20	31	7			4					42	8.8%
21 - 25	23	23		1	4	1				52	10.9%
26 - 30	24	15			8	1				48	10.0%
31 - 35	20	10	1	1	7					39	8.1%
36 - 40	15	5		2	9			3		34	7.1%
41 - 45	19	12		1	7			1	1	41	8.6%
46 - 50	26	13		2	7					48	10.0%
51 - 55	17	9	1	2	15					44	9.2%
56 - 60	11	5		3	13					32	6.7%
61 - 65	11	6		1	4					22	4.6%
66 - 70	11	8			1			1		21	4.4%
71 - 75	6	2			1	1			1	11	2.3%
76 - 80	11	6	1		1		1			20	4.2%
81 - 85	4	4				2				10	2.1%
86 - 90	5	1		1						7	1.5%
91 - 95	5	2								7	1.5%
96+										0	0.0%
Total	239	128	3	14	82	5	1	5	2	479	100.0%

Passenger Fatalities (2011) By Person Age & Vehicle Type											
Driver/Operator Age	Passenger Vehicle	Pickup Truck	Single Unit Truck	Truck-tractor/ Trailer(s)	Motorcycle	ATV	Motor Scooter/ Moped	Other	Unknown	Total	% of Total Driver Fatalities
Unknown	2									2	1.2%
Under 16	22	5						2		29	17.3%
16 - 20	18	6			1			1		26	15.5%
21 - 25	15	1		1						17	10.1%
26 - 30	12	2			2			1		17	10.1%
31 - 35	4	4			2					10	6.0%
36 - 40	9	4								13	7.7%
41 - 45	3	1		1	2			1		8	4.8%
46 - 50	2	1		1						4	2.4%
51 - 55	3	3			1					7	4.2%
56 - 60	2	1			1					4	2.4%
61 - 65	3				3					6	3.6%
66 - 70	8				1					9	5.4%
71 - 75	4	2								6	3.6%
76 - 80	3									3	1.8%
81 - 85	2									2	1.2%
86 - 90	5									5	3.0%
91 - 95											0.0%
96+											0.0%
Total	117	30	0	3	13	0	0	5	0	168	100.0%

Fatalities in Crashes (2011) By County					
County	Fatalities	County	Fatalities	County	Fatalities
Adair	5	Grant	6	Nowata	6
Alfalfa	2	Greer	1	Okfuskee	4
Atoka	6	Harmon	2	Oklahoma	72
Beaver	3	Harper	0	Okmulgee	13
Beckham	6	Haskell	5	Osage	11
Blaine	3	Hughes	3	Ottawa	8
Bryan	6	Jackson	3	Pawnee	5
Caddo	15	Jefferson	2	Payne	19
Canadian	20	Johnston	2	Pittsburg	14
Carter	12	Kay	9	Pontotoc	7
Cherokee	8	Kingfisher	10	Pottawatomie	18
Choctaw	5	Kiowa	3	Pushmataha	7
Cimarron	0	Latimer	2	Roger Mills	4
Cleveland	14	LeFlore	9	Rogers	18
Coal	1	Lincoln	9	Seminole	6
Comanche	14	Logan	8	Sequoyah	6
Cotton	0	Love	4	Stephens	7
Craig	5	McClain	12	Texas	3
Creek	12	McCurtain	11	Tillman	1
Custer	13	McIntosh	16	Tulsa	69
Delaware	11	Major	3	Wagoner	13
Dewey	3	Marshall	7	Washington	11
Ellis	2	Mayes	9	Washita	5
Garfield	4	Murray	8	Woods	2
Garvin	13	Muskogee	15	Woodward	5
Grady	13	Noble	7	Total	696

Fatalities in Crashes (2011) By City/Town					
City/Town	Fatalities	City/Town	Fatalities	City/Town	Fatalities
Afton	1	Elk City	1	Pawhuska	2
Anadarko	2	Enid	2	Piedmont	1
Ardmore	4	Eufaula	1	Ponca City	1
Asher	2	Geary	1	Pryor	1
Bartlesville	5	Gene Autry	1	Sapulpa	1
Bethany	2	Glenpool	1	Seminole	1
Bethel Acres	2	Grove	2	Shawnee	4
Bixby	1	Guthrie	2	Slaughterville	1
Blackwell	1	Hinton	2	Stigler	1
Blair	1	Holdenville	2	Stillwater	2
Bokchito	2	Howe	1	Stilwell	1
Bray	1	Idabel	1	Stratford	1
Broken Arrow	10	Kingston	1	Stringtown	1
Calera	1	Lawton	5	Stroud	1
Carnegie	1	Marlow	1	Sulphur	2
Checotah	3	McAlester	3	Tahlequah	3
Chickasha	2	Meeker	1	Tecumseh	1
Choctaw	1	Midwest City	2	Tishomingo	1
Clinton	1	Minco	1	Tonkawa	1
Commerce	1	Moore	1	Tulsa	47
Coweta	1	Mounds	1	Tushka	1
Davenport	1	Muldrow	1	Tuttle	1
Davidson	1	Muskogee	4	Union City	1
Del City	3	Newcastle	8	Verdigris	2
Dibble	3	Norman	6	Vinita	1
Duncan	1	Nowata	1	W. Siloam Springs	1
Earlsboro	1	Oklahoma City	74	Wagoner	1
Edmond	5	Okmulgee	1	Waurika	1
Elgin	1	Owasso	1	Wright City	1
				Total	274