

Fatal Crashes (2011)

Crashes, Fatalities & Injuries

In 2011, there were 609 fatal crashes in Oklahoma. Fatal crashes decreased 1.1% from 616 in 2010 to 609 in 2011. Fatal crashes in 2011 resulted in 696 fatalities and 479 persons injured. Fatalities increased 4.2% from 668 in 2010 to 696 in 2011.

Fatalities

Of the 696 fatalities in 2011 crashes, 479 were drivers, 168 were passengers, one was an occupant in a parked vehicle, 47 were pedestrians, and one was a bicyclist.

First Harmful Event

The first harmful event in a crash is defined as the first damage-producing event for the crash.

The first harmful event in 46.8% of the fatal crashes in 2011 was a collision with a non-fixed object. Of these crashes with a non-fixed object, 78.9% involved a collision with another vehicle and 14.7% involved a collision with a pedestrian.

Another 28.2% of the fatal crashes involved a collision with a fixed object. Some 22.7% involved a collision with a tree, 8.7% involved a collision with a fence and 8.7% involved a collision with an embankment.

The first harmful event in 24.6% of the fatal crashes was a non-collision, which includes rollovers (47.3%), roadway departures (33.4%) and crossing the center median or center line (9.3%).

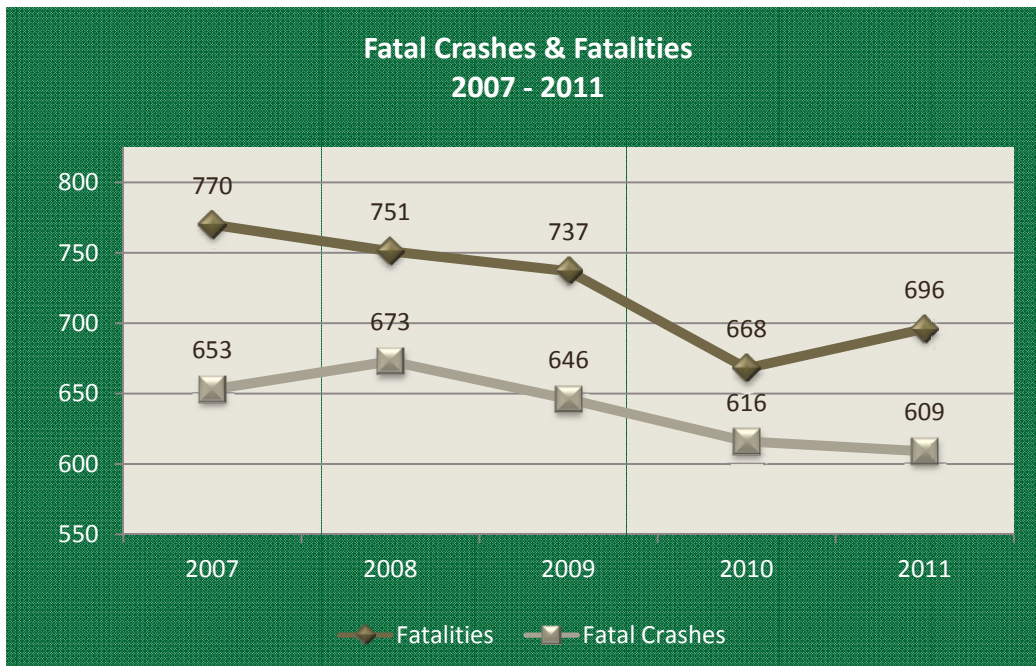
Oklahoma
Department of Public Safety
Highway Safety Office

3223 N. Lincoln Blvd.
Oklahoma City, OK 73105

Phone: 405.523.1570
Fax: 405.523.1586

www.ohso.ok.gov

- ▶ Fatal crashes in 2011 decreased 1.1% from 616 in 2010 to 609.
- ▶ 36% of fatal crashes in 2011 were alcohol-related.
- ▶ The primary contributing factor for fatal crashes was unsafe speed in 2011.



Time, Day & Month

Fatal crashes in 2011 peaked between the hours of 3 p.m. (15:00) and 8:59 p.m. (20:59). Saturday and Sunday had the highest number of fatal crashes with 227 (37.2%). The month of May had the most fatal crashes in 2011 with 65 (10.7%).

Number of Vehicles Involved

In 2011, 57.1% of fatal crashes involved only one vehicle, 36.8% involved two vehicles and 6.0% involved three or more vehicles.

Highway Class

In 2011, 20.0% of fatal crashes occurred on city streets, 19.9% on county roads and 17.1% on rural state highways.

Rural vs. Urban

Some 68.5% of the 2011 fatal crashes occurred in rural areas.

Alcohol-Related

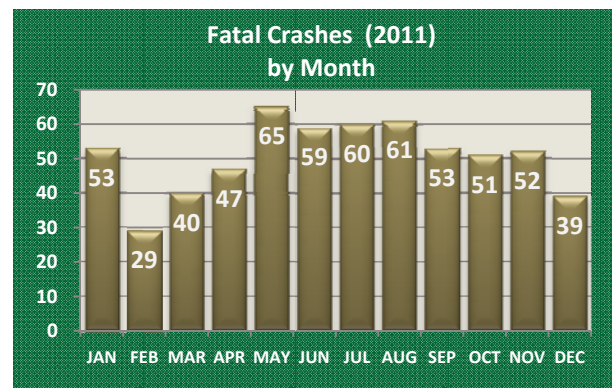
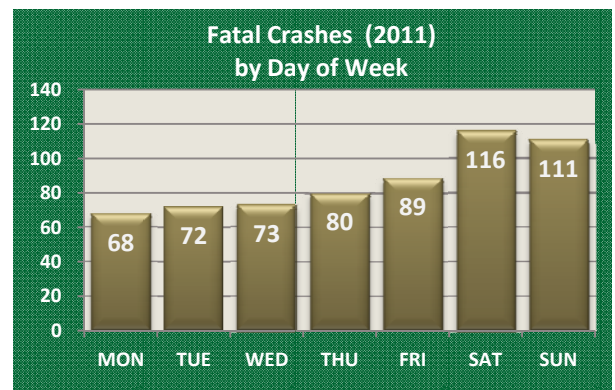
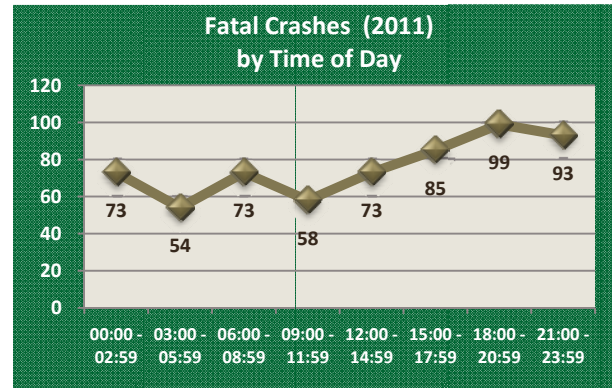
A crash is considered to be alcohol-related if a driver, pedestrian or bicyclist has an alcohol-related driver condition. In 2011, 36.1% of fatal crashes were alcohol-related.

Contributing Factors

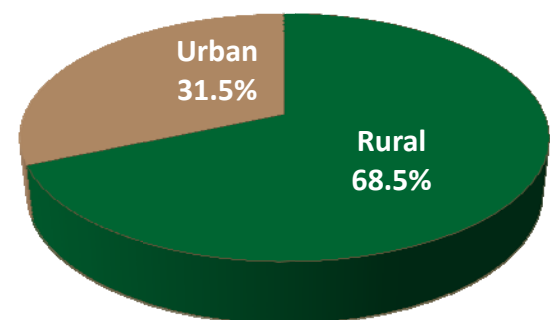
In 2011, 26.9% of the fatal crashes involved a driver who was driving at an unsafe speed. Of these, 36.0% were exceeding the legal limit, 22.0% were driving at an unsafe speed on a curve/turn and 9.0% were driving at an unsafe speed classified as other.

Some 9.9% of the fatal crashes involved an improper act or improper movement by a driver.

Some 8.4% of the fatal crashes involved a driver who went left of center. Of these, 56.8% were left of center meeting another vehicle, 33.8% were left of center in a marked zone and 9.4% were left of center-other.



**Fatal Crashes (2011)
Rural vs. Urban**



2011 Fatal Crashes County & Crash Injury Severity											
County	OHP	Non-OHP	Total	County	OHP	Non-OHP	Total	County	OHP	Non-OHP	Total
Adair	3	1	4	Grant	5		5	Nowata	4	1	5
Alfalfa	2		2	Greer	1		1	Okfuskee	4		4
Atoka	4	2	6	Harmon	1		1	Oklahoma	14	50	64
Beaver	3		3	Harper			0	Okmulgee	11		11
Beckham	4	1	5	Haskell	4	1	5	Osage	8	1	9
Blaine	2		2	Hughes	1	2	3	Ottawa	4	2	6
Bryan	4	2	6	Jackson	2	1	3	Pawnee	5		5
Caddo	7	5	12	Jefferson	1	1	2	Payne	11	1	12
Canadian	9	9	18	Johnston	1	1	2	Pittsburg	8	2	10
Carter	9	3	12	Kay	6	3	9	Pontotoc	6		6
Cherokee	4	2	6	Kingfisher	9		9	Pottawatomie	11	4	15
Choctaw	5		5	Kiowa	2		2	Pushmataha	7		7
Cimarron			0	Latimer	2		2	Roger Mills	4		4
Cleveland	2	11	13	LeFlore	9		9	Rogers	14	1	15
Coal	1		1	Lincoln	4	3	7	Seminole	5	1	6
Comanche	9	5	14	Logan	6	1	7	Sequoyah	6		6
Cotton			0	Love	4		4	Stephens	5	2	7
Craig	2	1	3	McClain	4	6	10	Texas	3		3
Creek	10	2	12	McCurtain	9	2	11	Tillman	1		1
Custer	10	1	11	McIntosh	6	3	9	Tulsa	19	44	63
Delaware	7	2	9	Major	3		3	Wagoner	7	4	11
Dewey	3		3	Marshall	4	1	5	Washington	5	4	9
Ellis	2		2	Mayes	6	1	7	Washita	5		5
Garfield	2	2	4	Murray	5	2	7	Woods	2		2
Garvin	12	1	13	Muskogee	10	2	12	Woodward	4		4
Grady	8	4	12	Noble	6		6	Total	408	201	609

Fatal Crashes (2011) By City/Town					
City/Town	Crashes	City/Town	Crashes	City/Town	Crashes
Afton	1	Elk City	1	Pawhuska	2
Anadarko	2	Enid	2	Piedmont	1
Ardmore	4	Eufaula	1	Ponca City	1
Asher	1	Geary	1	Pryor	1
Bartlesville	4	Gene Autry	1	Sapulpa	1
Bethany	2	Glenpool	1	Seminole	1
Bethel Acres	1	Grove	1	Shawnee	3
Bixby	1	Guthrie	2	Slaughterville	1
Blackwell	1	Hinton	2	Stigler	1
Blair	1	Holdenville	2	Stillwater	2
Bokchito	2	Howe	1	Stilwell	1
Bray	1	Idabel	1	Stratford	1
Broken Arrow	9	Kingston	1	Stringtown	1
Calera	1	Lawton	5	Stroud	1
Carnegie	1	Marlow	1	Sulphur	2
Checotah	3	McAlester	3	Tahlequah	2
Chickasha	2	Meeker	1	Tecumseh	1
Choctaw	1	Midwest City	2	Tishomingo	1
Clinton	1	Minco	1	Tonkawa	1
Commerce	1	Moore	1	Tulsa	43
Coweta	1	Mounds	1	Tushka	1
Davenport	1	Muldrow	1	Tuttle	1
Davidson	1	Muskogee	4	Union City	1
Del City	3	Newcastle	7	Verdigris	1
Dibble	2	Norman	6	Vinita	1
Duncan	1	Nowata	1	W. Siloam Springs	1
Earlsboro	1	Oklahoma City	64	Wagoner	1
Edmond	5	Okmulgee	1	Waurika	1
Elgin	1	Owasso	1	Wright City	1
				Total	250