

Fatalities in Crashes (2010)

Oklahoma
Department of Public Safety
Highway Safety Office

3223 N. Lincoln Blvd.
Oklahoma City, OK 73105

Phone: 405.523.1570
Fax: 405.523.1586

www.ohso.ok.gov

Crashes, Fatalities & Injuries

In 2010, there were 668 fatalities in 616 fatal crashes in Oklahoma. Fatal crashes decreased 4.6% from 646 in 2009 to 616 in 2010. These fatal crashes resulted in 668 fatalities and 472 persons injured. Fatalities decreased 9.4% from 737 in 2009 to 668 in 2010.

Fatalities

Of the 668 fatalities in 2010 crashes, 451 were drivers, 139 were passengers, two were occupants in parked vehicles, 68 were pedestrians, and eight were bicyclists.

Fatality Age & Sex

Some 11.1% of the fatalities in 2010 crashes were age 46-50, 10.2% were age 16-20 and 9.9% were age 21-25.

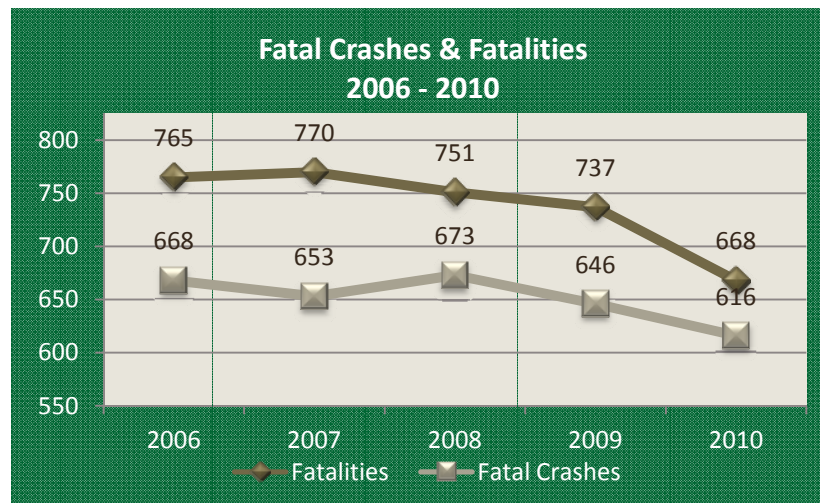
In 2010, 66.9% of the 668 fatalities were male, while 44.6% of the licensed drivers in Oklahoma were male and 49.5% of the total population was male.

Male fatalities in 2010 crashes were highest in the 46-50 age group with 54, followed by age 21-25 with 45 fatalities and age 31-35 with 43 fatalities.

Female fatalities in 2010 crashes were highest in the 16-20 age group with 28, followed by age 51-55 with 25 fatalities and age 21-15 with 21 fatalities.

Fatalities in 2010 Crashes By Age & Sex				
Age	Person Sex			% of Total
	Female	Male	Total	
Under 16	16	23	39	5.8%
16 - 20	28	40	68	10.2%
21 - 25	21	45	66	9.9%
26 - 30	12	35	47	7.0%
31 - 35	18	43	61	9.1%
36 - 40	15	33	48	7.2%
41 - 45	17	31	48	7.2%
46 - 50	20	54	74	11.1%
51 - 55	25	37	62	9.3%
56 - 60	9	28	37	5.5%
61 - 65	7	24	31	4.6%
66 - 70	11	15	26	3.9%
71 - 75	8	8	16	2.4%
76 - 80	7	9	16	2.4%
81 - 85	1	11	12	1.8%
86 - 90	6	5	11	1.6%
91 - 95		5	5	0.7%
96+		1	1	0.1%
Total	221	447	668	100.0%

- ▶ Fatalities decreased 9.4% from 737 in 2009 to 668 in 2010.
- ▶ 59.8% of the occupant fatalities in passenger vehicle/pickup trucks, with known restraint use, were unrestrained.



Restraint Use Among Fatalities

Of the 324 driver fatalities with known restraint use in passenger vehicle/pickup trucks, 58.6% were unrestrained.

Of the 121 passenger fatalities with known restraint use in passenger vehicle/pickup trucks, 62.8% were unrestrained.

Overall, including both drivers and passengers, 59.8% of the fatalities with known restraint use in passenger vehicle/pickup trucks were unrestrained.

Fatalities in Crashes (2010) In Passenger Vehicles/Pickup Trucks Known Restraint Use & Person Type			
Restraint Use	Person Type		
	Driver	Passenger	Total
Not In Use	190	76	266
In Use	134	41	175
Child Restraint		4	4
Total	324	121	445

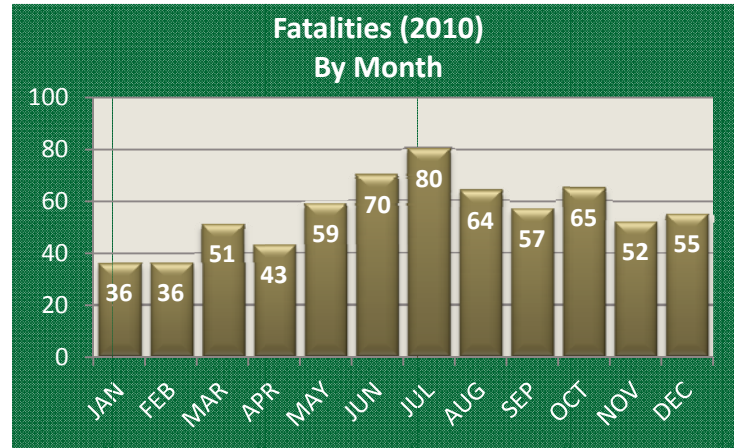
Fatalities by Month

July 2010 had the most traffic fatalities with 80 (12.0%), followed by June with 70 (10.5%) and October with 65 (9.7%).

Fatalities by Holiday

The table below shows the number of fatalities during each holiday period in 2010.

Holiday Fatalities (2010)				
2010 Holiday	Beginning 6 p.m.	Ending Midnight	Hours	Fatalities
Memorial Day	Friday 5/28/10	Monday 5/31/10	78	9
Independence Day	Friday 7/2/10	Sunday 7/5/10	78	10
Labor Day	Friday 9/3/10	Monday 9/6/10	78	10
Thanksgiving	Wednesday 11/24/10	Sunday 11/28/09	102	6
Christmas	Thursday 12/23/10	Sunday 12/26/10	78	6
New Year	Thursday 12/30/10	Sunday 1/2/11	78	8



Passenger Seating Position

Of the 76 unrestrained passenger fatalities in passenger vehicles/pickup trucks, 45 (59.2%) were in the front right seat position.

Some 27.6% of the unrestrained fatalities were in the second row of seats in the passenger vehicle or pickup truck.

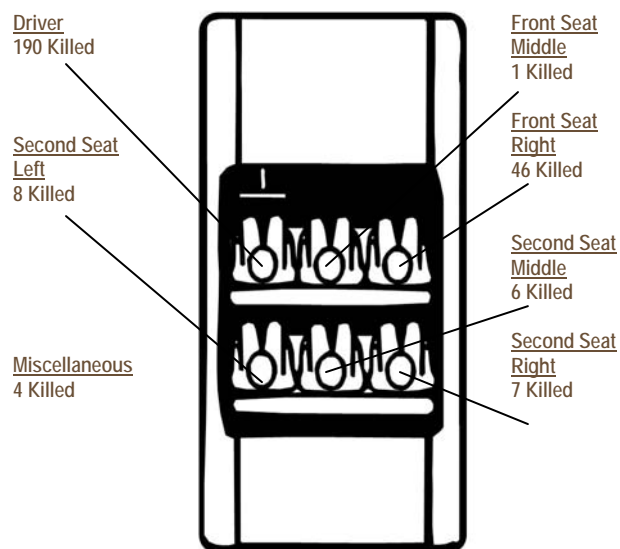
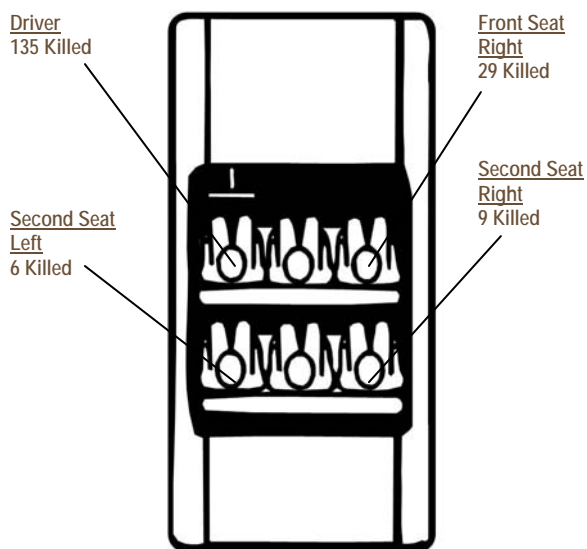
Unrestrained Passenger Fatalities in Crashes (2010) in Passenger Vehicles/Pickup Trucks By Seating Position and Vehicle Type			
Seating Position	Vehicle Type		Total
	Passenger Vehicle	Pickup Truck	
Front Seat Middle		1	1
Front Seat Right	31	14	45
Second Row Seat Left	6	2	8
Second Row Seat Middle	4	2	6
Second Row Seat Right	6	1	7
Third Row Seat Left	1		1
Third Row Seat Middle	1		1
Other Passenger in unenclosed area		1	1
Riding on Vehicle Exterior	1		1
Unknown		5	5
Total	50	26	76

Occupants Killed By Seating Position and Safety Equipment Use

Passenger Vehicles and Pickup Trucks

With Safety Equipment

Without Safety Equipment

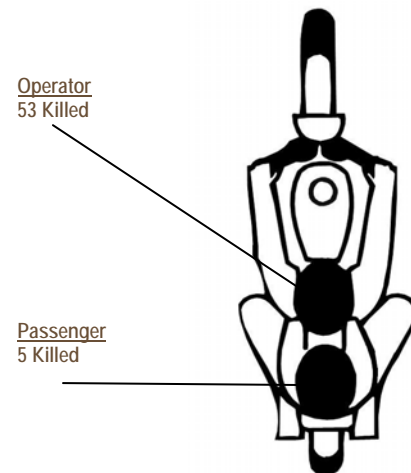
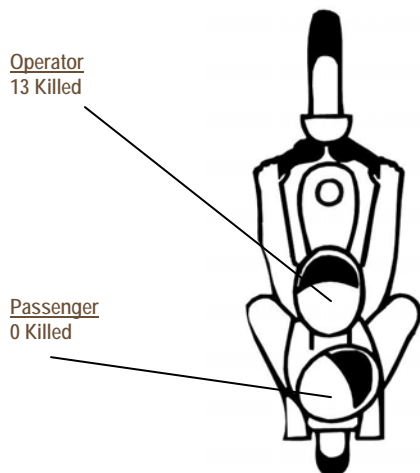


These numbers count only those occupants for whom safety equipment use and seat location were reported on the collision report form. Miscellaneous seat position includes positions such as third row seats in cars and vans.

Motorcyclists

With Helmet

Without Helmet



These numbers include only those motorcyclists whose helmet use was reported on the collision report form.

Driver/Operator Fatalities (2010) By Driver Age & Vehicle Type											
Driver/Operator Age	Passenger Vehicle	Pickup Truck	Single Unit Truck	Truck-tractor/Trailer(s)	Motorcycle	ATV	Motor Scooter/Moped	Other	Unknown	Total	% of Total Driver Fatalities
Under 16	1				2					3	.7%
16 - 20	22	14	1		4					41	9.1%
21 - 25	23	13		1	6					43	9.5%
26 - 30	20	10		1	2	1				34	7.5%
31 - 35	26	12		1	5	1			2	47	10.4%
36 - 40	16	8	1	1	7			1		34	7.5%
41 - 45	14	13		1	8		1			37	8.2%
46 - 50	27	12		1	12	3		1		56	12.4%
51 - 55	20	12		1	12	1				46	10.2%
56 - 60	5	11	2		2			1		21	4.7%
61 - 65	4	8	1	1	8	1		2		25	5.5%
66 - 70	15	2	2		1		1			21	4.7%
71 - 75	7	4								11	2.4%
76 - 80	7	3			1					11	2.4%
81 - 85	6	1						1		8	1.8%
86 - 90	6	2								8	1.8%
91 - 95	2	2					1			5	1.1%
96+											0.0%
Total	221	127	7	8	70	7	3	6	2	451	100.0%

Passenger Fatalities (2010) By Passenger Age & Vehicle Type								
Passenger Age	Vehicle Type							% of Total Fatalities
	Passenger Vehicle	Pickup Truck	Truck/Trailer	Motorcycle	ATV	Other	Total	
Under 16	20	3			1	1	25	18.0%
16 - 20	13	6				1	20	14.4%
21 - 25	15	4					19	13.7%
26 - 30	6	2		1		1	10	7.2%
31 - 35	5	3		1			9	6.5%
36 - 40	1	7					8	5.8%
41 - 45	2	4		1			7	5.0%
46 - 50	7	2	1				10	7.2%
51 - 55	4			1			5	3.6%
56 - 60	4	3					7	5.0%
61 - 65		1		1			2	1.4%
66 - 70	4						4	2.9%
71 - 75	2	2					4	2.9%
76 - 80	3	1					4	2.9%
81 - 85	3	1					4	2.9%
86 - 90	1						1	0.7%
91 - 95								
96+								
Total	90	39	1	5	1	3	139	100.0%

Fatalities in Crashes (2010) By County					
County	Fatalities	County	Fatalities	County	Fatalities
Adair	3	Grant	2	Nowata	1
Alfalfa	2	Greer	3	Okfuskee	2
Atoka	4	Harmon	3	Oklahoma	80
Beaver	3	Harper	1	Okmulgee	17
Beckham	6	Haskell	3	Osage	16
Blaine	3	Hughes	4	Ottawa	11
Bryan	11	Jackson	2	Pawnee	5
Caddo	10	Jefferson	3	Payne	11
Canadian	16	Johnston	1	Pittsburg	6
Carter	10	Kay	9	Pontotoc	10
Cherokee	8	Kingfisher	4	Pottawatomie	23
Choctaw	6	Kiowa	5	Pushmataha	11
Cimarron	6	Latimer	3	Roger Mills	4
Cleveland	12	LeFlore	9	Rogers	16
Coal	2	Lincoln	14	Seminole	5
Comanche	12	Logan	8	Sequoyah	13
Cotton	1	Love	4	Stephens	11
Craig		McClain	18	Texas	10
Creek	8	McCurtain	13	Tillman	2
Custer	7	McIntosh	5	Tulsa	57
Delaware	15	Major	2	Wagoner	9
Dewey	1	Marshall	6	Washington	4
Ellis	4	Mayes	18	Washita	1
Garfield	9	Murray	2	Woods	3
Garvin	5	Muskogee	10	Woodward	3
Grady	13	Noble	8	Total	668

Fatalities in Crashes (2010) By City/Town					
City/Town	Fatalities	City/Town	Fatalities	City/Town	Fatalities
Adair	1	Geary	3	Norman	6
Antlers	1	Guthrie	1	Oklahoma City	74
Ardmore	4	Guymon	1	Okmulgee	1
Bartlesville	1	Harrah	3	Pauls Valley	1
Bethany	1	Haskell	1	Poteau	1
Bethel Acres	1	Henryetta	2	Roland	1
Broken Arrow	1	Hooker	1	Salina	1
Carnegie	1	Hugo	1	Sallisaw	1
Catoosa	3	Idabel	2	Sand Springs	2
Cherokee	1	Jenks	1	Sapulpa	1
Chickasha	4	Kiowa	2	Savanna	2
Clinton	3	Langston	1	Shawnee	5
Comanche	1	Lawton	6	Skiatook	1
Commerce	1	Lehigh	1	Spavinaw	1
Coweta	1	Lone Grove	1	Stillwater	4
Del City	5	Madill	1	Stringtown	1
Dibble	2	McLoud	1	Stroud	1
Drumright	1	Medicine Park	1	Tahlequah	2
Duncan	4	Miami	1	Tecumseh	1
Durant	2	Midwest City	1	Terral	1
Edmond	5	Moore	2	Tulsa	45
El Reno	3	Muldrow	1	Warner	1
Elk City	1	Muskogee	2	Warr Acres	2
Enid	6	Mustang	1	Weatherford	1
Francis	1	Ninnekah	1	Wetumka	1
				Total	252