

Fatal Crashes (2010)

Crashes, Fatalities & Injuries

In 2010, there were 616 fatal crashes in Oklahoma. Fatal crashes decreased 4.6% from 646 in 2009 to 616 in 2010. These fatal crashes resulted in 668 fatalities and 472 persons injured. Fatalities decreased 9.4% from 737 in 2009 to 668 in 2010.

Fatalities

Of the 668 fatalities in 2010 crashes, 451 were drivers, 139 were passengers, two were occupants in a parked vehicle, 68 were pedestrians, and eight were bicyclists.

First Harmful Event

The first harmful event in a crash is defined as the first damage-producing event for the crash.

In 49.4% of the fatal crashes in 2010, the first harmful event was a collision with a non-fixed object. Some 72.7% of non-fixed object crashes involved a collision with another vehicle and 19.4% involved a collision with a pedestrian.

Another 31.5% of the fatal crashes involved a collision with a fixed object. Some 16.5% involved a collision with a tree, 10.3% involved a collision with a culvert and 9.8% involved a collision with a fence.

The first harmful event in 18.8% of the fatal crashes was a non-collision, which includes rollovers (64.7%), roadway departures (21.6%) and crossing the center median or center line (9.5%).

Oklahoma
Department of Public Safety
Highway Safety Office

3223 N. Lincoln Blvd.
Oklahoma City, OK 73105

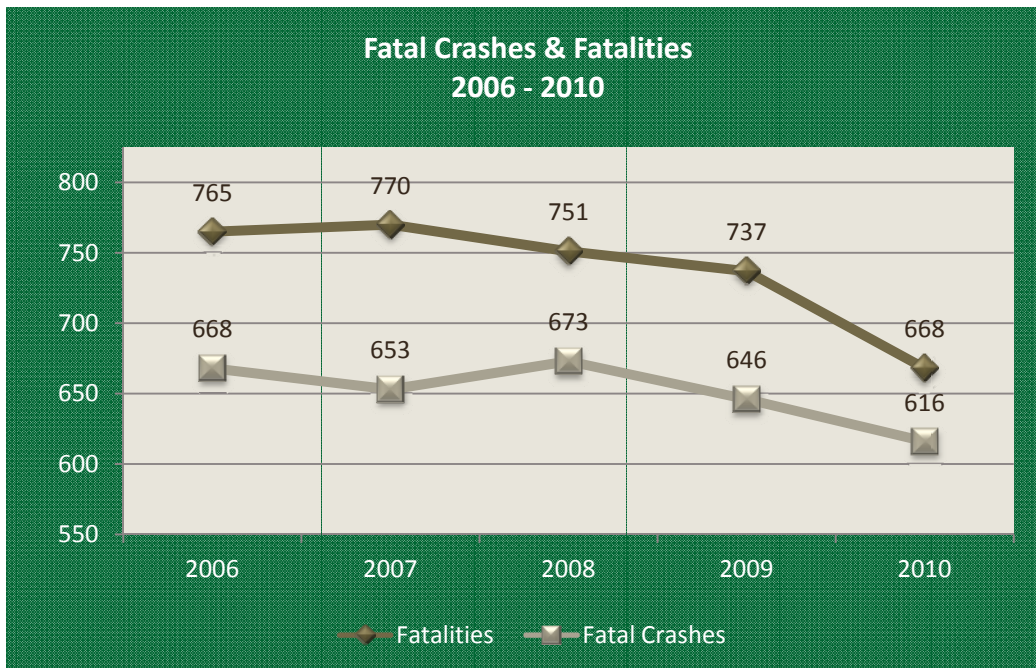
Phone: 405.523.1570
Fax: 405.523.1586

www.ohso.ok.gov

▶ Fatal crashes in 2010 decreased 4.6% from 646 in 2009 to 616.

▶ 40% of fatal crashes in 2010 were alcohol-related.

▶ More than two-thirds of fatal crashes in 2010 occurred in rural areas.



Time, Day & Month

Fatal crashes in 2010 peaked between the hours of 3 p.m. (15:00) and 8:59 p.m. (20:59). Friday and Saturday had the highest number of fatal crashes with 33.4% of the total fatal crashes. July had the most fatal crashes in 2010 with 72 (11.7%).

Number of Vehicles Involved

Some 58.3% of fatal crashes involved only one vehicle, 36.2% involved two vehicles and 5.5% involved three or more vehicles.

Highway Class

Some 21.1% of fatal crashes occurred on county roads, 19.8% on rural state highways and 19.5% on city streets.

Rural vs. Urban

Some 67.2% of the 2010 fatal crashes occurred in rural areas.

Alcohol-Related

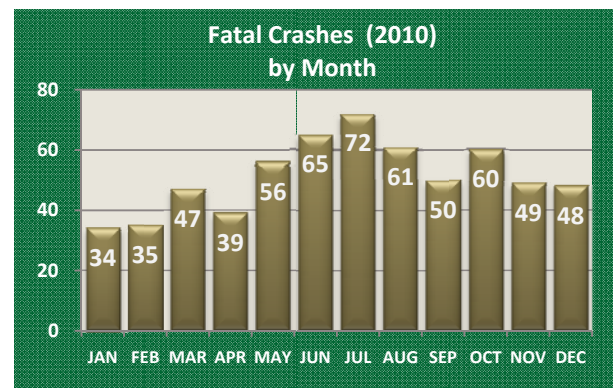
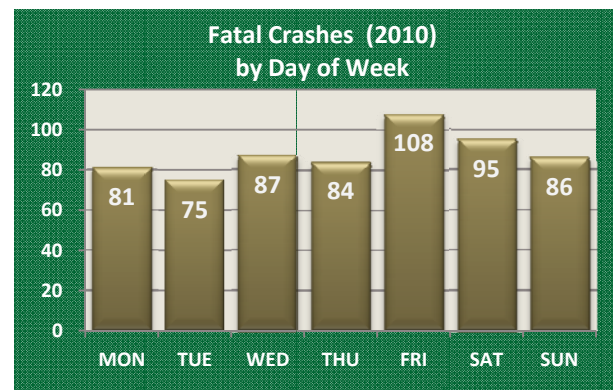
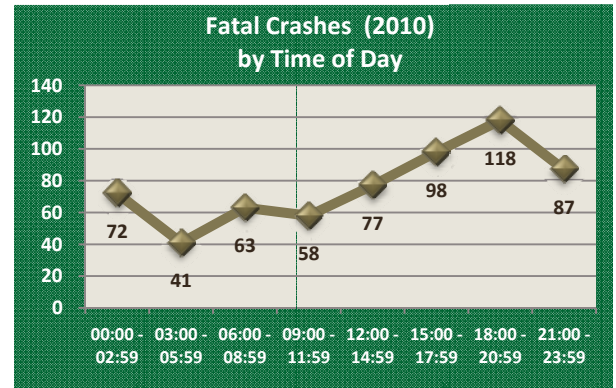
A crash is considered to be alcohol-related if a driver, pedestrian or bicyclist has an alcohol-related driver condition. Some 36.9% of the fatal crashes were alcohol-related.

Contributing Factors

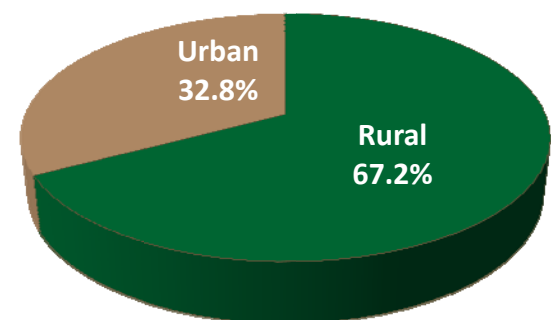
Some 24.7% of the fatal crashes involved a driver who was driving at an unsafe speed. Of these, 33.6% were exceeding the legal limit, 25.7% were driving at an unsafe speed on a curve/turn and 11.2% were driving at an unsafe speed for the type of roadway they were traveling.

Some 17.5% of the fatal crashes involved an improper act or improper movement by a driver.

Some 10.6% of the fatal crashes involved a driver who failed to yield. Of these, 56.9% failed to yield from a stop sign, 13.8% failed to yield from a private drive, 4.6% failed to yield from a stop sign and 4.6% failed to yield to a pedestrian.



**Fatal Crashes (2010)
Rural vs. Urban**



2010 Fatal Crashes County & Crash Injury Severity											
County	OHP	Non-OHP	Total	County	OHP	Non-OHP	Total	County	OHP	Non-OHP	Total
Adair	3		3	Grant	1		1	Nowata	1		1
Alfalfa	1	1	2	Greer	3		3	Okfuskee	2		2
Atoka	3	1	4	Harmon	3		3	Oklahoma	19	57	76
Beaver	3		3	Harper	1		1	Okmulgee	13	2	15
Beckham	5	1	6	Haskell	3		3	Osage	12	2	14
Blaine	3		3	Hughes	3	1	4	Ottawa	9	2	11
Bryan	9	2	11	Jackson	2		2	Pawnee	5		5
Caddo	8	1	9	Jefferson	3		3	Payne	8	3	11
Canadian	6	8	14	Johnston	1		1	Pittsburg	5	1	6
Carter	6	4	10	Kay	8		8	Pontotoc	9		9
Cherokee	6	2	8	Kingfisher	4		4	Pottawatomie	14	5	19
Choctaw	5	1	6	Kiowa	5		5	Pushmataha	8	1	9
Cimarron	4		4	Latimer	3		3	Roger Mills	4		4
Cleveland	3	9	12	LeFlore	9		9	Rogers	13	2	15
Coal	2		2	Lincoln	12		12	Seminole	5		5
Comanche	6	6	12	Logan	6	2	8	Sequoyah	12	1	13
Cotton	1		1	Love	4		4	Stephens	6	5	11
Craig			0	McClain	11		11	Texas	6	2	8
Creek	6	1	7	McCurtain	11	2	13	Tillman	2		2
Custer	4	2	6	McIntosh	5		5	Tulsa	20	34	54
Delaware	11		11	Major	2		2	Wagoner	7	2	9
Dewey	1		1	Marshall	4	1	5	Washington	3	1	4
Ellis	3		3	Mayes	16	1	17	Washita	1		1
Garfield	1	5	6	Murray	2		2	Woods	2		2
Garvin	4	1	5	Muskogee	6	4	10	Woodward	3		3
Grady	7	5	12	Noble	7		7	Total	435	181	616

Fatal Crashes (2010) By City/Town							
City/Town	Crashes	City/Town	Crashes	City/Town	Crashes	City/Town	Crashes
Adair	1	Durant	2	Lehigh	1	Sallisaw	1
Antlers	1	Edmond	5	Lone Grove	1	Sand Springs	2
Ardmore	4	El Reno	3	Madill	1	Sapulpa	1
Bartlesville	1	Elk City	1	McLoud	1	Savanna	2
Bethany	1	Enid	5	Medicine Park	1	Shawnee	5
Bethel Acres	1	Francis	1	Miami	1	Skiatook	1
Broken Arrow	1	Geary	2	Midwest City	1	Spavinaw	1
Carnegie	1	Guthrie	1	Moore	2	Stillwater	4
Catoosa	3	Guymon	1	Muldrow	1	Stringtown	1
Cherokee	1	Harrah	3	Muskogee	2	Stroud	1
Chickasha	4	Haskell	1	Mustang	1	Tahlequah	2
Clinton	2	Henryetta	1	Ninnekah	1	Tecumseh	1
Comanche	1	Hooker	1	Norman	6	Terral	1
Commerce	1	Hugo	1	Oklahoma City	69	Tulsa	43
Coweta	1	Idabel	2	Okmulgee	1	Warner	1
Del City	5	Jenks	1	Pauls Valley	1	Warr Acres	2
Dibble	1	Kiowa	2	Poteau	1	Weatherford	1
Drumright	1	Langston	1	Roland	1	Wetumka	1
Duncan	4	Lawton	6	Salina	1	Total	240