



Highway Safety Fact Sheet

Pickup Truck Drivers

November 1, 2005

Pickup Truck Drivers in 2004 Crashes

Drivers

In 2004, there were 30,474 pickup truck drivers involved in 26,866 crashes. This is 21.9% of the total 138,899 drivers involved in crashes in 2004.

Driver Injury Severity

Of the 30,474 pickup truck drivers, 117 (less than one percent) were killed and 5,247 (17.2%) were injured in 2004 crashes.

There were a total of 489 drivers killed in 2004 crashes. Of the 489 drivers killed in 2004, 24.9% (117) were pickup truck drivers.

Safety Belts

Of the 117 pickup truck drivers killed, 77 (65.8%) were not using safety belts.

Drivers Killed & Ejected

Of the 117 pickup truck drivers killed, 34 (29.0%) were ejected. Of the drivers ejected and killed, 32 (94.1%) were not using safety belts.

Alcohol/Drug-Related

Of the 30,474 pickup truck drivers involved in crashes, 1,488 (4.9%) had an Alcohol/Drug-Related Driver Condition. A closer look at the 1,488 drivers shows that 79.0% were between the ages of 16 and 45. Age 21-25 was the largest group with 326 (21.9%) of the drivers, followed by age 16-20 with 205 (13.8%) of the drivers, and then age 41-45 with 181 (12.2%) of the drivers.

Driver Age & Gender

Of the 30,474 pickup truck drivers in crashes in 2004, 5,182 (17.0%) were age 16-20, followed by age 21-25 with 3,823 (12.5%), age 41-45 with 2,797 (9.2%), and age 26-30 with 2,758 (9.1%). Some 23,456 (77.0%) of the drivers were male.

Number of Vehicles

Some 73.8% of the total crashes involving a pickup truck, involved two vehicles and 16.3% involved one vehicle. In fatal crashes, however, 49.6% involved two vehicles and 44.4% involved one vehicle.

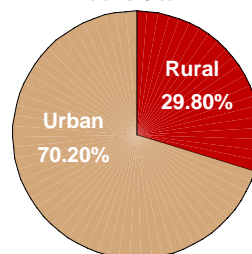
Crashes

Of the 26,866 crashes involving a pickup truck driver in 2004, 248 (less than one percent) involved a fatality and 9,628 (35.8%) involved an injury.

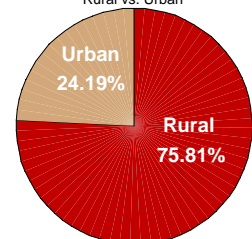
Rural vs. Urban

Some 70.2% of the crashes involving at least one pickup truck occurred in urban areas in 2004.

2004 Crashes Involving Pickup Trucks
Rural vs. Urban



2004 Fatal Crashes Involving Pickup Trucks
Rural vs. Urban



However, in fatal crashes involving at least one pickup truck, more than three-fourths of the crashes occurred in rural areas.

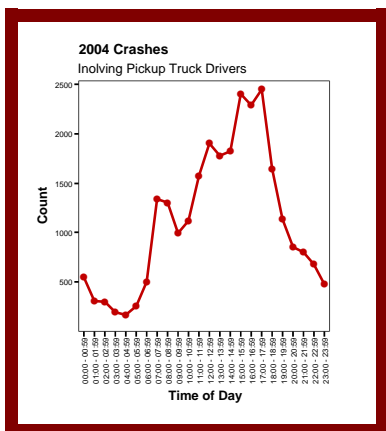
Cause of Crashes

The primary causes of crashes involving pickup trucks were: Failed To Yield (18.3%), Followed Too Closely, (12.3%), Unsafe Speed (11.7%) and Inattention (11.7%).

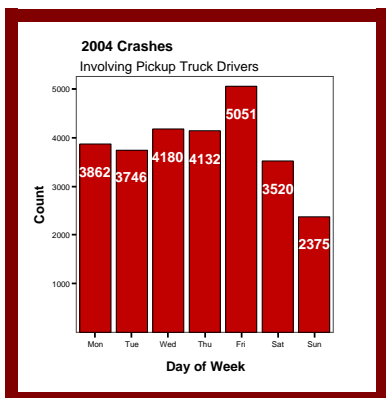
In fatal crashes the primary causes were Unsafe Speed (24.6%), Other Improper Act/Movement (14.5%), and Left of Center (12.1%).

Time and Day

The incidence of crashes involving pickup trucks peaked between 1500 (3 p.m.) to 1800 (6 p.m.).



Friday had the highest occurrence of pickup truck crashes with 18.8% of the total crashes.



Other Facts

- ⇒ 45.6% of the crashes occurred on city streets.
- ⇒ 13.3% of the crashes occurred on US Urban Highways.
- ⇒ 74.3% of the crashes occurred in daylight.
- ⇒ 18.1% of the crashes occurred in darkness.
- ⇒ 51.8% of the crashes occurred in a business locality.
- ⇒ 53.1% of the crashes were not intersection related.
- ⇒ 46.9% of the crashes were intersection related.
- ⇒ 85.5% of the crashes occurred in clear or cloudy weather.
- ⇒ 74.3% of the crashes occurred in daylight.
- ⇒ 17.9% of the crashes occurred in darkness.

Oklahoma Highway Safety Office
 3223 N. Lincoln Blvd.
 Okla. City, OK 73105-5403
 Phone: 405/523-1570
 Fax: 405/523-1586
 Web Site: www.dps.state.ok.us/ohso