

Oklahoma Highway Safety Fact Sheet

2004 Fatalities (Preliminary)

May 12, 2005

This fact sheet is based on preliminary 2004 crash data available as of 5/5/05 and may be subject to change. This data will be superseded when the "Oklahoma Crash Facts 2004" publication becomes available.

Fatal Crashes and Fatalities in 2004

Crashes & Injuries

Preliminary data for 2004 indicates there were 666 Fatal crashes involving 1,660 persons. This resulted in 776 fatalities and 649 persons injured¹.

Fatalities

Of the 776 fatalities, 488 were drivers, 232 were passengers, 50 were pedestrians, and six were bicyclists.

Fatalities in 2004 Crashes			
Vehicle Type	Driver	Passenger	Total
Passenger Vehicle	278	155	433
Single Unit Truck	1	1	2
Truck-tractor	16	10	26
Motorcycle	65	12	77
Motor Home	1	1	2
Farm Machinery	2		2
Special Mobilized Machine	1		1
Pickup Truck	116	51	167
ATV	7	2	9
All Others	1	0	1
Totals	488	232	720

Excludes 50 pedestrian and six bicyclist fatalities.

Safety Belt Use Among Fatalities

} 47.8% (133 of 278) of the drivers killed in passenger vehicles were not using a safety belt.

} 56.8% (88 of 155) of the passengers killed in passenger vehicles were not using safety equipment.

} 65.5% (76 of 116) of the drivers killed in pickup trucks were not using a safety belt.

} 62.7% (32 of 51) of the passengers killed in pickup trucks were not using safety equipment.

Driver Age & Gender

There were 1,020 drivers involved in Fatal crashes in 2004. Of these 1,020 drivers, 15.8% were age 16-20, 12.4% were age 21-25, 10.3% were age 31-35, and 10.2% were age 26-30. Some 71.8% of the drivers involved in Fatal crashes were male.

Of the 488 drivers killed in Fatal crashes, 14.5% were age 16-20, 13.1% were age 21-25, 10.5% were age 46-50, and 10.2% were age 26-30. Some 73.4% of the drivers killed were male.

Causes

Statewide the primary causes of Fatal crashes were Unsafe Speed (30.5%), Other Improper/Act Movement (14.7%), Failed To Yield (9.3%), and Left of Center (9.2%).

However, there were some variances in the causes of Fatal crashes when considering the area in which the crash occurred.

In rural areas the primary causes were: Unsafe Speed (33.1%), Other Improper Act/Movement (16.8%), and Left of Center (10.5%). In urban areas the primary causes were:

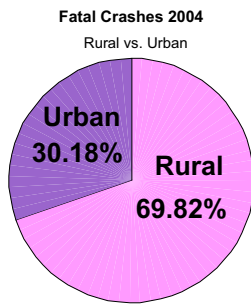
¹ Includes incapacitating, non-incapacitating, and possible injuries.

Unsafe Speed (24.4%), Failed To Yield (14.4%), and Pedestrian Action (12.9%).

This was followed by Friday with 16.2% of the total crashes.

Rural vs. Urban

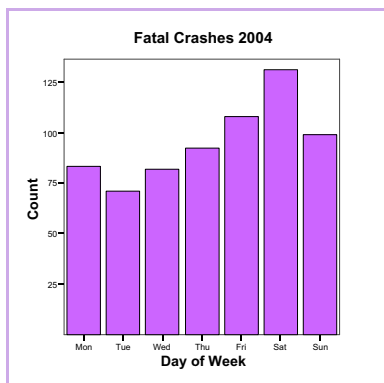
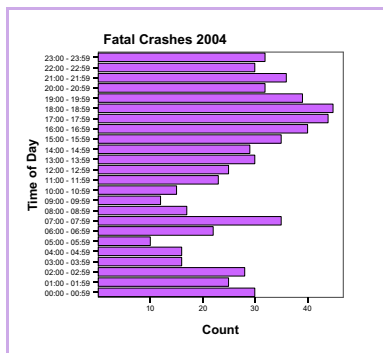
There were almost three times as many Fatal crashes in rural areas as there were in urban areas.



Time & Day

Early morning and evening hours had the highest occurrence of Fatal crashes in 2004.

Saturday had the highest occurrence of Fatal crashes in 2004 with 19.7% of the total crashes.



Alcohol/Drug Related

Some 23.7% (158 of 666) of the Fatal crashes were Alcohol/Drug related in 2004. This resulted in 183 fatalities and 171 persons injured.

In Addition

- } 53.9% of the Fatal crashes involved one vehicle, 41.0% involved two vehicles, and 3.6% involved three vehicles.
- } 47.3% of the Fatal crashes occurred with clouds present, 41.1% occurred in clear weather, and 8.0% occurred in rain.
- } 50.5% of the Fatal crashes occurred in daylight, 38.9% occurred in darkness, and 6.2% occurred in a lighted area.
- } 17.4% of the Fatal crashes occurred at an intersection.
- } 22.4% of the Fatal crashes occurred on a county road, 20.9% on a city street, and 16.7% on a U.S. highway.

Oklahoma Highway Safety Office
 3223 N. Lincoln Blvd.
 Okla. City, OK 73105-5403
 Phone: 405/523-1570
 Fax: 405/523-1586
 Web Site: www.dps.state.ok.us/ohso
