

# Oklahoma Highway Safety Fact Sheet

Drivers Age 65+

October 21, 2005

## Drivers Age 65+ in 2004 Crashes

### Demographics

In Oklahoma in 2004, 13.2% of the population was comprised of persons age 65+, while 16.6% of the licensed drivers were in this same age group. In addition, 8.2% of the persons involved in crashes were age 65+ and 8.1% of the total drivers were in this same age group.

Demographics Persons Age 65+		
Population Age 65+ in 2004		
Total	Age 65+	Age 65+ Percentage
3,523,553	464,440	13.2%
Licensed Drivers Age 65+ in 2004		
2,394,692	398,099	16.6%
Persons Age 65+ in 2004 Crashes		
153,302	12,188	7.9%
Drivers Age 65+ in 2004 Crashes		
138,899	11,314	8.1%
2004 Crashes		
76,156	10,994	14.4%

### Crashes, Fatalities, & Injuries

In 2004, there were 10,994 crashes where at least one driver was age 65+. This was 14.4% of the total crashes in 2004. There were 125 fatal crashes and 4,167 injury crashes where at least one driver was age 65+. Among the drivers age 65+, there were 71 fatalities and 2,210 injured.

### Safety Belt Use-Driver Fatalities Age 65+

Of the 68 drivers killed in passenger vehicles/pickup trucks, 36.4% were not using safety belts.

### Driver Condition

Less than one percent of the drivers age 65+ involved in crashes in 2004 had an Alcohol/Drug-Related driver condition.

### Type of Vehicle

Some 67.6% of the driver fatalities in 2004 crashes were in passenger vehicles and 25.3% were in pickup trucks.

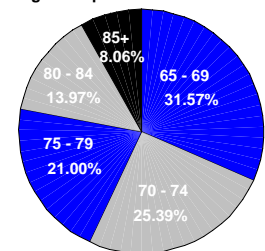
Fatalities in 2004 Crashes	
Vehicle Type	Driver
Passenger	48
Motorcycle	3
Farm Machinery	2
Pickup Truck	18
Total	71

### Driver Age & Gender

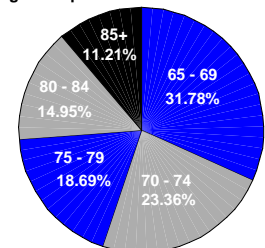
Of the 11,314 drivers age 65+ in crashes in 2004, 31.6% were age 65-69, 25.4% were age 70-74, and 21.0% were age 75-79. Some 56.7% of the drivers age 65+ in 2004 crashes were male.

There were 107 drivers age 65+ in fatal crashes in 2004. Some 31.8% of the drivers were age 65-69, 23.4% were 70-74, and 18.7% were 75-79. Of the 107 drivers age 65+ in fatal crashes, 69.2% were male.

Drivers Age 65+ in Crashes 2004 Age Groups



Drivers Age 65+ in Fatal Crashes 2004 Age Groups

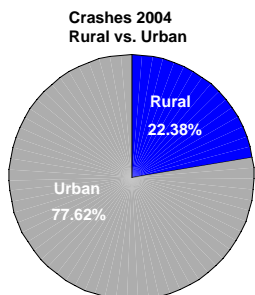
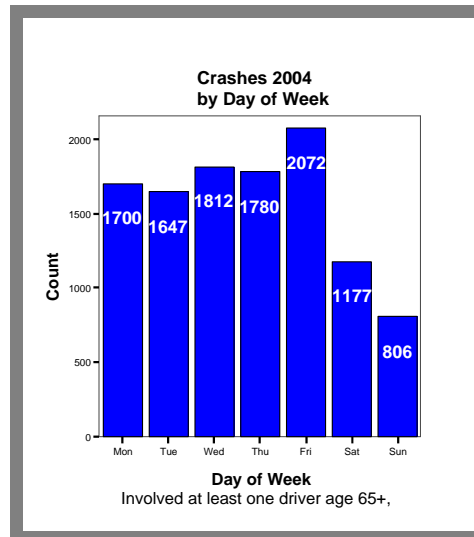


**Causes**

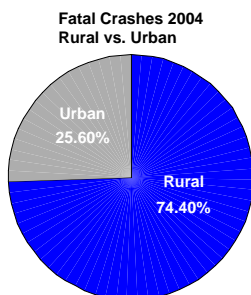
The primary causes for crashes where at least one driver was age 65+ were: Failed To Yield (27.4%), Improper Turn (12.6%), Other Improper/Act Movement (10.1%), Inattention (10.1%), and Failed to Stop (10.0%).

**Rural vs. Urban**

Of the 10,994 crashes in 2004 involving at least one driver age 65+, 77.6% of the crashes occurred in urban areas.



At least one driver in the crash was age 65+.

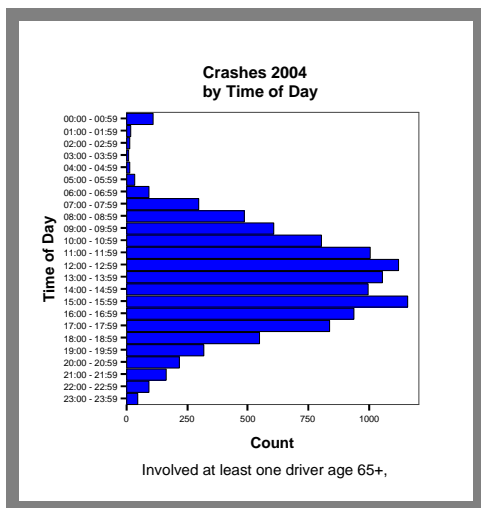


At least one driver in the crash was age 65+.

However, fatal crashes occurred in rural areas almost three times more often than in urban areas.

**Time & Day**

Crashes involving drivers age 65+ peaked between 12 noon and 4 p.m.



Involved at least one driver age 65+.

Friday had the highest incidence of crashes involving drivers age 65+.

**Additional Statistics**

- \* 56.0% of the crashes were intersection related.
- \* 45.1% of the crashes were in cloudy weather.
- \* 42.8% of the crashes were in clear weather.
- \* 87.1% of the crashes occurred in daylight.
- \* 82.5% of the crashes involved two vehicles.
- \* 53.5% of the crashes occurred on city streets.
- \* 94.2% of the drivers age 65+ involved in crashes were Oklahoma licensed drivers.
- \* 16.6% of the licensed drivers in Oklahoma were age 65+.
- \* 8.1% of the drivers in 2004 crashes were age 65+.

Oklahoma Highway Safety Office  
 3223 N. Lincoln Blvd.  
 Okla. City, OK 73105-5403  
 Phone: 405/523-1570  
 Fax: 405/523-1586  
 Web Site: [www.dps.state.ok.us/ohso](http://www.dps.state.ok.us/ohso)