

Oklahoma Highway Safety Fact Sheet

Truck-Tractor/Semi-Trailer Combinations

March 10, 2004

Truck-Tractor/Semi-Trailer Combinations In 2002 Crashes

Crashes & Injuries

In 2002, there were 3,294 reported crashes involving truck-tractor/semi-trailer combinations. These crashes resulted in 85 fatal crashes with 110 fatalities. There were also 1,010 injury crashes with 1,525 persons injured.

Fatalities

Of the 110 fatalities, 71 were drivers, 34 were passengers, and five were pedestrians.

| Fatalities in 2002 Crashes Involving Truck-Tractor/Semi-Trailer Combinations | | | |
|---|--------|-----------|-------|
| Vehicle Type | Driver | Passenger | Total |
| Passenger Vehicle | 33 | 26 | 59 |
| Pickup Truck | 16 | 3 | 19 |
| Truck-Tractor | 14 | 5 | 19 |
| Other | 8 | | 8 |
| Totals | 71 | 34 | 105 |

Five pedestrians not included in table.

Seat Belt Use Among Fatalities

- 27.3% (9 of 33) of the drivers killed in passenger vehicles were not using a seat belt.
- 56.3% (9 of 16) of the drivers killed in pickup trucks were not using a seat belt.
- 50.0% (7 of 14) of the drivers killed in a truck-tractor/semi-trailer combination were not using a seat belt.
- 41.4% (12 of 29) of the passengers killed in a passenger vehicle or a pickup truck were not using a seat belt.

Driver Age & Gender

Of the 3,455 truck-tractor/semi-trailer drivers, involved in 2002 crashes, 92.4% were male. Some 14.6% of these drivers were age 41-45, 14.5% were age 36-40, and 11.6% were age 31-35.

Of the 92 truck-tractor/semi-trailer drivers in fatal crashes, 95.7% were male. Some 20.7% were age 36-40, 16.3% were age 46-50, and 13.0% were age 51-55.

Causes

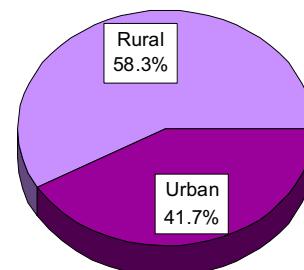
The primary causes of crashes involving a truck-tractor/semi-trailer combination were: Unsafe Speed (17.4%), Other Improper Act/Movement (13.2%), and Changed Lanes Unsafely (11.3%).

The primary causes of fatal crashes involving a truck-tractor/semi-trailer combination were: Other Improper Act/Movement (21.2%), Unsafe Speed (16.5%), and Left of Center (16.5%).

Rural vs. Urban

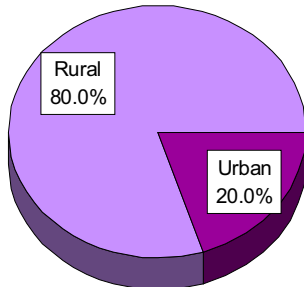
More than half (58.3%) of the crashes involving a truck-tractor/semi-trailer combination occurred in rural areas.

Truck-Tractor/Semi-Trailers In Crashes
Rural vs. Urban (2002)



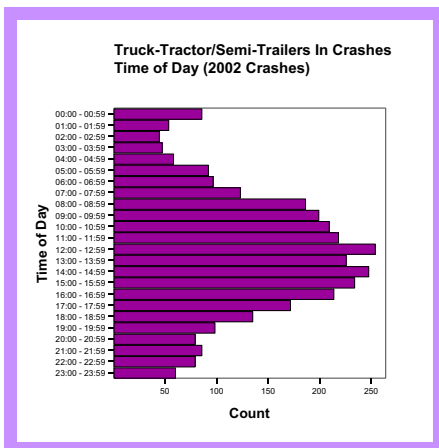
However, fatal crashes occurred in rural areas four times more than in urban areas.

Truck-Tractor/Semi-Trailers In Fatal Crashes
Rural vs. Urban (2002)

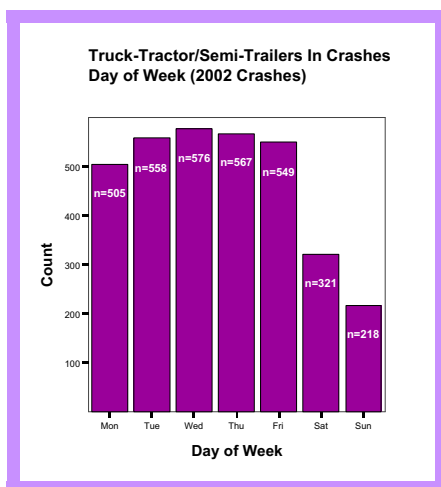


Time & Day

Midday and early evening hours had the highest incidence of crashes involving a truck-tractor/semi-trailer combination.



Wednesday had the highest incidence of crashes.



Alcohol/Drug-Related

Some 3.3% (108 of 3,294) of the crashes involving a truck-tractor/semi-trailer combination were Alcohol/Drug-Related. Of the 109 Alcohol/Drug-Related crashes, 7.4% (8 of 108) were fatal.

Less than one percent of the truck-tractor/semi-trailer drivers had an Alcohol/Drug-Related Driver Condition.

Highway Class

Some 29.8% of the crashes involving a truck-tractor/semi-trailer combination occurred on Interstate Highways, 14.9% occurred on city streets, and 14.2% occurred on Urban U.S. Highways.

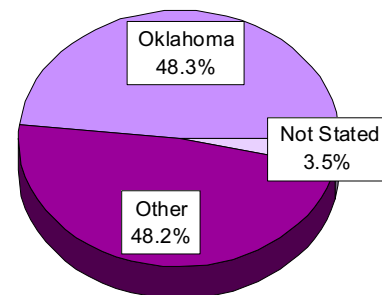
Driver License

Some 4.2% (97,614 of 2,339,529) of Oklahoma's licensed drivers in 2002 held a Class A driver license.

Some 2.4% (3,455 of 142,122) of drivers involved in crashes were in a truck-tractor/semi-trailer combination.

Some 48.3% of the truck-tractor/semi-trailer combination drivers involved in crashes in 2002 were licensed in Oklahoma.

Truck-Tractor/Semi-Trailer Drivers in Crashes
Drivers License State (2002)



Oklahoma Highway Safety Office
 3223 N. Lincoln Blvd.
 Okla. City, OK 73105-5403
 Phone: 405/523-1570
 Fax: 405/523-1586
 Web Site: www.dps.state.ok.us/ohso