

# Alcohol-Related Crashes (2016)

Oklahoma  
Department of Public Safety  
Highway Safety Office

3223 N. Lincoln Blvd.  
Oklahoma City, OK 73105

Phone: 405.523.1570  
Fax: 405.523.1586

[www.ohso.ok.gov](http://www.ohso.ok.gov)

## Alcohol-Related Fatal Crashes & Fatalities Five-Year Trend

	2012	2013	2014	2015	2016
Alcohol-Related Fatal Crashes	242	168	151	161	173
Total Fatal Crashes	642	621	589	590	628
Alcohol-Related Fatal Crashes as Percentage of Total Fatal Crashes	37.7%	27.1%	25.6%	27.3%	27.5%
Fatalities in Alcohol-Related Crashes	261	189	172	188	189
Total Fatalities	708	678	669	645	687
Alcohol-Related Fatalities as Percentage of Total Fatalities	36.9%	27.9%	25.7%	29.1%	27.5%

27.5% of fatal crashes were alcohol-related in 2016.

In 2016, four times as many male drivers as female drivers had an alcohol-related driver condition.

In 2016, 75.8% of fatalities involved in alcohol-related crashes were unrestrained.\*



\*Includes occupants of passenger vehicles and pickup trucks for whom restraint use is known.

### Crashes

Alcohol-related crashes in 2016 resulted in 189 fatalities—an increase of 0.5% from the 188 fatalities in 2015.

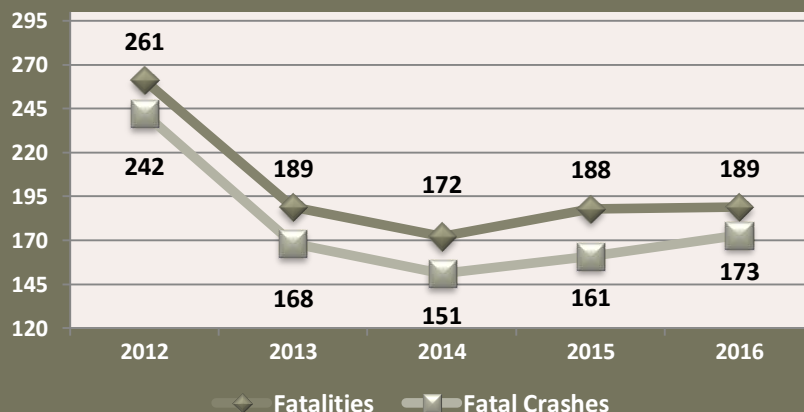
2,104 persons were injured in 2016 alcohol-related crashes—a decrease of 5.6% from the 2,229 persons injured in 2015.

### Fatalities

Of the 189 alcohol-related fatalities in 2016, 150 were drivers, 29 were passengers, and ten were pedestrians.

Of the 179 vehicle occupant fatalities in alcohol-related crashes, 51.4% were occupants of passenger vehicles, 30.2% were occupants of pickup trucks, 16.2% were motorcyclists, 1.1% were ATV/motor scooter riders, and another 1.1% were occupants of larger trucks.

## Alcohol-Related Fatal Crashes & Fatalities 2012 - 2016



## Vehicle Occupant Fatalities (2016) In Alcohol-Related Crashes

Vehicle Type	Person Type		Total
	Driver	Passenger	
Passenger Vehicle	71	21	92
Pickup Truck	47	7	54
Large Truck	2		2
Motorcycle	28	1	29
ATV/Motor Scooter	2		2
<b>Total</b>	<b>150</b>	<b>29</b>	<b>179</b>

**Fatalities by Age, Sex & Person Type**

The table to the right shows fatalities in alcohol-related crashes in 2016 by age, sex and person type. Of these fatalities in alcohol-related crashes 79.4% were drivers, 15.3% were passengers, and 5.3% were pedestrians.

Of the 150 driver fatalities in alcohol-related crashes, 14.0% were age 21-25, 12.7% were age 31-35, and another 12.7% were age 56-60.

Some 80% of the driver fatalities in alcohol-related crashes were male.

Fatalities in Alcohol-Related Crashes (2016) Person Age, Person Sex and Person Type												
Fatality Age	Person Type											
	Driver			Pedestrian			Passenger			Total		
	Female	Male	Total	Female	Male	Total	Female	Male	Total	Female	Male	Total
1 - 5				1		1				1		1
6 - 10								1	1		1	1
11 - 15		1	1	1		1		1	1	1	2	3
16 - 20	4	2	6				2	1	3	6	3	9
21 - 25	7	14	21		1	1	1	5	6	8	20	28
26 - 30	2	15	17	2		2	3	2	5	7	17	24
31 - 35	2	17	19		1	1	1	5	6	3	23	26
36 - 40	4	14	18				2	1	3	6	15	21
41 - 45	3	13	16		1	1	1	1	2	4	15	19
46 - 50	1	9	10					1	1	1	10	11
51 - 55	2	6	8		1	1				2	7	9
56 - 60	3	16	19	1	1	2				4	17	21
61 - 65	1	8	9							1	8	9
66 - 70	1	2	3							1	2	3
71 - 75		3	3					1	1		4	4
<b>Total</b>	<b>30</b>	<b>120</b>	<b>150</b>	<b>5</b>	<b>5</b>	<b>10</b>	<b>10</b>	<b>19</b>	<b>29</b>	<b>45</b>	<b>144</b>	<b>189</b>

Includes motorcyclists.

**Fatalities & Restraint Use**

Restraint use was known for 132 of the occupant fatalities in passenger vehicles/pickup trucks in alcohol-related crashes in 2016. Of the 132 fatalities with known restraint use, 75.8% were unrestrained.

Comparison of occupant fatalities by vehicle type shows that occupants of pickup trucks are more likely to be unrestrained than occupants of passenger vehicles—71.4% of occupants in passenger vehicles were unrestrained compared to 83.3% of occupants in pickup trucks.

Fatalities in Alcohol-Related Crashes (2016) Passenger Vehicle/Pickup Truck Occupants Persons Type, Vehicle Type, & Known Restraint Use									
Person Type	Type of Vehicle								
	Passenger Vehicle			Pickup Truck			Total		
	Restraint Use			Restraint Use			Restraint Use		
	Not In Use	In Use	Total	Not In Use	In Use	Total	Not In Use	In Use	Total
<b>Driver</b>	46	19	65	35	7	42	81	26	107
<b>Passenger</b>	14	5	19	5	1	6	19	6	25
<b>Total</b>	60	24	84	40	8	48	100	32	132

**Motorcyclist Fatalities & Helmet Use**

Helmet use was known for 28 of the 29 motorcyclists killed in alcohol-related crashes in 2016. Of these 28 motorcyclists, 89.3% were not wearing a helmet.

Motorcyclist Fatalities (2016) In Alcohol-Related Crashes By Person Type & Known Helmet Use			
Person Type	Not		Total
	Helmeted	Not Helmeted	
<b>Operator</b>	24	3	27
<b>Passenger</b>	1		1
<b>Total</b>	25	3	28

**Drivers with Alcohol-Related Condition**

In 2016, there were 3,562 drivers with an alcohol-related driver condition involved in crashes.

Nearly three times as many male as female drivers involved in crashes had an alcohol-related driver condition.

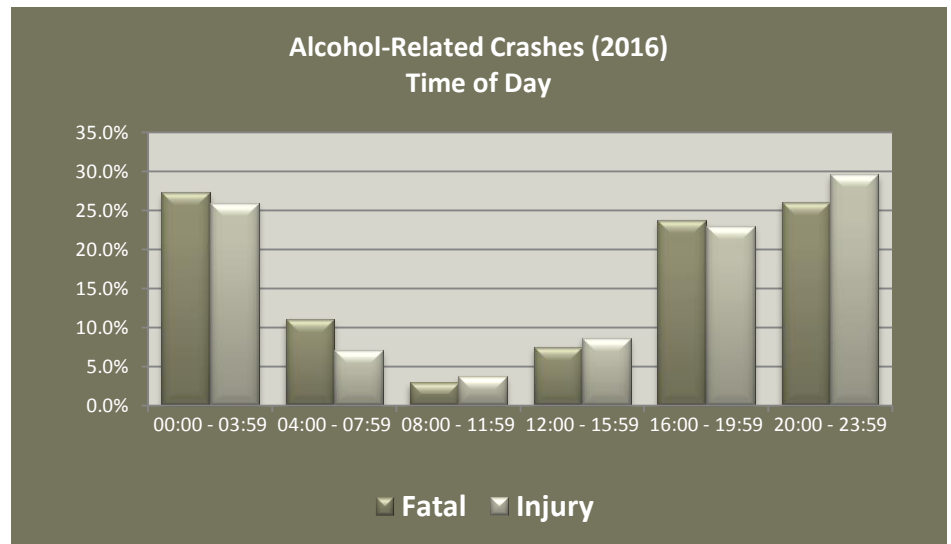
Drivers age 26-35 accounted for 29.6% of the drivers with an alcohol-related condition, followed by drivers age 16-25 with 26.2%, and drivers age 35-45 with 18.0%.

Drivers with Alcohol Condition in Crashes (2016) Driver Age & Driver Sex						
Driver Age	Person Sex				Total	
	Female		Male			
Under 16	1	0.0%	2	0.1%	3	0.1%
16 – 25	289	8.1%	643	18.1%	932	26.2%
26 – 35	303	8.5%	749	21.0%	1052	29.6%
35 – 45	163	4.6%	477	13.4%	640	18.0%
46 – 55	148	4.2%	363	10.2%	511	14.4%
56 – 65	75	2.1%	254	7.1%	329	9.2%
65 – 75	18	0.5%	56	1.6%	74	2.1%
76+	4	0.1%	14	0.4%	18	0.5%
<b>Total</b>	<b>1001</b>	<b>28.1%</b>	<b>2558</b>	<b>71.9%</b>	<b>3559</b>	<b>100.0%</b>

Excludes three drivers with unknown age and/or sex.  
Includes motorcycle operators.

**Crashes by Time of Day & Day of Week**

Alcohol-related crashes typically occur during late evening and early morning hours, and the year 2016 was no exception. Fatal and injury alcohol-related crashes occurred more often between 8:00 p.m. (20:00) and 3:59 a.m. (03:59). Fatal and injury alcohol-related crashes also occurred more often on Saturday and Sunday.



Does not include crashes of unknown time.

